

NSUN6 (C-15): sc-83451

BACKGROUND

The nucleolus consists of a number of specific proteins that play a critical role in the assembly of ribosomes, as well as in the maintenance and structural integrity of the nucleolus. NSUN6 (NOL1/NOP2/Sun domain family member 6), also known as NOPD1 (NOL1/NOP2/Sun and PUA domain-containing protein 1), is a 469 amino acid protein that belongs to the methyltransferase superfamily. NSUN6 contains 1 PUA domain and may have S-adenosyl-L-methionine-dependent methyl-transferase activity. The gene encoding NSUN6 maps to human chromosome 10, which houses over 1,200 genes and comprises nearly 4.5% of the human genome. Defects in some of the genes that map to chromosome 10 are associated with Charcot-Marie Tooth disease, Jackson-Weiss syndrome, Usher syndrome, nonsyndromic deafness, Wolman's syndrome, Cowden syndrome, multiple endocrine neoplasia type 2 and porphyria.

CHROMOSOMAL LOCATION

Genetic locus: NSUN6 (human) mapping to 10p12.31; Nsun6 (mouse) mapping to 2 A2.

SOURCE

NSUN6 (C-15) is an affinity purified goat polyclonal antibody raised against a peptide mapping within an internal region of NSUN6 of human origin.

PRODUCT

Each vial contains 200 µg IgG in 1.0 ml of PBS with < 0.1% sodium azide and 0.1% gelatin. Also available as TransCruz reagent for Gel Supershift and ChIP applications, sc-83451 X, 200 µg/0.1 ml.

Blocking peptide available for competition studies, sc-83451 P, (100 µg peptide in 0.5 ml PBS containing < 0.1% sodium azide and 0.2% BSA).

APPLICATIONS

NSUN6 (C-15) is recommended for detection of NSUN6 of mouse, rat and human origin by Western Blotting (starting dilution 1:200, dilution range 1:100-1:1000), immunoprecipitation [1-2 µg per 100-500 µg of total protein (1 ml of cell lysate)], immunofluorescence (starting dilution 1:50, dilution range 1:50-1:500) and solid phase ELISA (starting dilution 1:30, dilution range 1:30-1:3000); non cross-reactive with other NSUN family members.

NSUN6 (C-15) is also recommended for detection of NSUN6 in additional species, including equine, canine and avian.

Suitable for use as control antibody for NSUN6 siRNA (h): sc-75968, NSUN6 siRNA (m): sc-75969, NSUN6 shRNA Plasmid (h): sc-75968-SH, NSUN6 shRNA Plasmid (m): sc-75969-SH, NSUN6 shRNA (h) Lentiviral Particles: sc-75968-V and NSUN6 shRNA (m) Lentiviral Particles: sc-75969-V.

NSUN6 (C-15) X TransCruz antibody is recommended for Gel Supershift and ChIP applications.

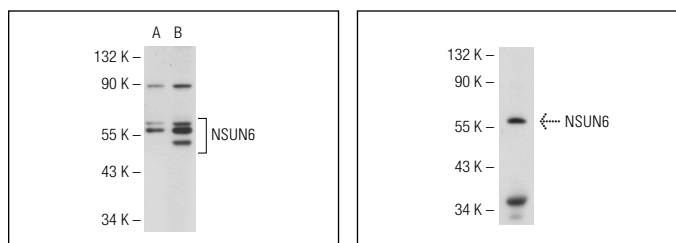
Molecular Weight of NSUN6: 52 kDa.

Positive Controls: A549 cell lysate: sc-2413 or NSUN6 (h): 293T Lysate: sc-115359.

RECOMMENDED SECONDARY REAGENTS

To ensure optimal results, the following support (secondary) reagents are recommended: 1) Western Blotting: use donkey anti-goat IgG-HRP: sc-2020 (dilution range: 1:2000-1:100,000) or Cruz Marker™ compatible donkey anti-goat IgG-HRP: sc-2033 (dilution range: 1:2000-1:5000), Cruz Marker™ Molecular Weight Standards: sc-2035, TBS Blotto A Blocking Reagent: sc-2333 and Western Blotting Luminol Reagent: sc-2048. 2) Immunoprecipitation: use Protein A/G PLUS-Agarose: sc-2003 (0.5 ml agarose/2.0 ml). 3) Immunofluorescence: use donkey anti-goat IgG-FITC: sc-2024 (dilution range: 1:100-1:400) or donkey anti-goat IgG-TR: sc-2783 (dilution range: 1:100-1:400) with UltraCruz™ Mounting Medium: sc-24941.

DATA



NSUN6 (C-15): sc-83451. Western blot analysis of NSUN6 expression in non-transfected: sc-117752 (A) and human NSUN6 transfected: sc-115359 (B) 293T whole cell lysates.

NSUN6 (C-15): sc-83451. Western blot analysis of NSUN6 expression in A549 whole cell lysate.

STORAGE

Store at 4° C, ****DO NOT FREEZE****. Stable for one year from the date of shipment. Non-hazardous. No MSDS required.

RESEARCH USE

For research use only, not for use in diagnostic procedures.

PROTOCOLS

See our web site at www.scbt.com or our catalog for detailed protocols and support products.


 MONOS
Satisfaction
Guaranteed

Try **NSUN6 (D-5): sc-393446**, our highly recommended monoclonal alternative to NSUN6 (C-15).