

C21orf70 (A-17): sc-83569

BACKGROUND

The smallest of the human chromosomes, 21 makes up about 1.5% of the human genome. Chromosome 21 contains nearly 300 genes and 47 million base pairs. Down syndrome, also known as trisomy 21, is the disease most commonly associated with chromosome 21. Alzheimer's disease, Jervell and Lange-Nielsen syndrome and amyotrophic lateral sclerosis are also associated with chromosome 21. Translocations are found to occur between chromosome 21 and 8, and chromosome 21 and 12 in certain leukemias. The C21orf70 gene product has been provisionally designated C21orf70 pending further characterization.

REFERENCES

1. Tesson, F., et al. 1996. Exclusion of KCNE1 (IsK) as a candidate gene for Jervell and Lange-Nielsen syndrome. *J. Mol. Cell. Cardiol.* 28: 2051-2055.
2. Tyson, J., et al. 1997. IsK and KvLQT1: mutation in either of the two sub-units of the slow component of the delayed rectifier potassium channel can cause Jervell and Lange-Nielsen syndrome. *Hum. Mol. Genet.* 6: 2179-2185.
3. Müller, S., et al. 2000. Molecular cytogenetic dissection of human chromosomes 3 and 21 evolution. *Proc. Natl. Acad. Sci. USA* 97: 206-211.
4. Mao, R., et al. 2005. Primary and secondary transcriptional effects in the developing human Down syndrome brain and heart. *Genome Biol.* 6: R107.
5. Robakis, N.K. 2006. The discovery and mapping to chromosome 21 of the Alzheimer's amyloid gene: history revised. *J. Alzheimers Dis.* 10: 453-455.
6. Sun, X., et al. 2006. BACE2, as a novel APP θ -secretase, is not responsible for the pathogenesis of Alzheimer's disease in Down syndrome. *FASEB J.* 20: 1369-1376.

CHROMOSOMAL LOCATION

Genetic locus: C21orf70 (human) mapping to 21q22.3, LOC729535 (human) mapping to 13q11; 1810008A18Rik (mouse) mapping to 10 C1.

SOURCE

C21orf70 (A-17) is an affinity purified rabbit polyclonal antibody raised against a peptide mapping within an internal region of C21orf70 of human origin.

PRODUCT

Each vial contains 100 μ g IgG in 1.0 ml of PBS with < 0.1% sodium azide and 0.1% gelatin.

Blocking peptide available for competition studies, sc-83569 P, (100 μ g peptide in 0.5 ml PBS containing < 0.1% sodium azide and 0.2% BSA).

STORAGE

Store at 4° C, **DO NOT FREEZE**. Stable for one year from the date of shipment. Non-hazardous. No MSDS required.

RESEARCH USE

For research use only, not for use in diagnostic procedures.

APPLICATIONS

C21orf70 (A-17) is recommended for detection of C21orf70 of human origin, 1810008A18Rik of mouse origin and its corresponding rat homolog by Western Blotting (starting dilution 1:200, dilution range 1:100-1:1000), immunoprecipitation [1-2 μ g per 100-500 μ g of total protein (1 ml of cell lysate)], immunofluorescence (starting dilution 1:50, dilution range 1:50-1:500) and solid phase ELISA (starting dilution 1:30, dilution range 1:30-1:3000); also recommended for detection of LOC729535 of human origin.

C21orf70 (A-17) is also recommended for detection of C21orf70 in additional species, including equine, canine, bovine and porcine.

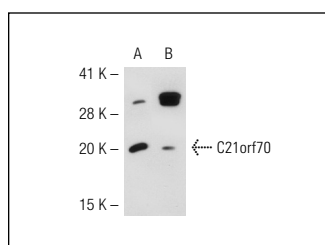
Suitable for use as control antibody for C21orf70 siRNA (h): sc-91403, 1810008A18Rik siRNA (m): sc-108539, C21orf70 shRNA Plasmid (h): sc-91403-SH, 1810008A18Rik shRNA Plasmid (m): sc-108539-SH, C21orf70 shRNA (h) Lentiviral Particles: sc-91403-V and 1810008A18Rik shRNA (m) Lentiviral Particles: sc-108539-V.

Positive Controls: NAMALWA cell lysate: sc-2234, Y79 cell lysate: sc-2240 or HeLa whole cell lysate: sc-2200.

RECOMMENDED SECONDARY REAGENTS

To ensure optimal results, the following support (secondary) reagents are recommended: 1) Western Blotting: use goat anti-rabbit IgG-HRP: sc-2004 (dilution range: 1:2000-1:100,000) or Cruz Marker™ compatible goat anti-rabbit IgG-HRP: sc-2030 (dilution range: 1:2000-1:5000), Cruz Marker™ Molecular Weight Standards: sc-2035, TBS Blotto A Blocking Reagent: sc-2333 and Western Blotting Luminol Reagent: sc-2048. 2) Immunoprecipitation: use Protein A/G PLUS-Agarose: sc-2003 (0.5 ml agarose/2.0 ml). 3) Immunofluorescence: use goat anti-rabbit IgG-FITC: sc-2012 (dilution range: 1:100-1:400) or goat anti-rabbit IgG-TR: sc-2780 (dilution range: 1:100-1:400) with UltraCruz™ Mounting Medium: sc-24941.

DATA



C21orf70 (A-17): sc-83569. Western blot analysis of C21orf70 expression in 293T (A) and HeLa (B) whole cell lysate.

PROTOCOLS

See our web site at www.scbt.com or our catalog for detailed protocols and support products.