

# OLIG1 (K-14): sc-83740

## BACKGROUND

The oligodendrocyte lineage-specific basic helix-loop-helix (OLIG) family of transcription factors include OLIG1-OLIG3, which differ in tissue expression. OLIG1 and OLIG2 are specifically expressed in nervous tissue as gene regulators of oligodendrogenesis. OLIG2 is more widely expressed in embryonic brain than OLIG1, while OLIG3 is primarily expressed in non-neural tissues. OLIG1 and OLIG2 interact with the Nkx-2.2 homeodomain protein, which is responsible for directing ventral neuronal patterning in response to graded Sonic hedgehog signaling in the embryonic neural tube. These interactions between OLIG proteins and Nkx-2.2 appear to promote the formation of alternate cell types by inhibiting V3 interneuron development. OLIG1 and OLIG2 are abundantly expressed in oligodendroglioma and nearly absent in astrocytomas. Therefore, OLIG proteins are candidates for molecular markers of human glial brain tumors, which are the most common primary malignancies of the human brain.

## REFERENCES

1. Briscoe, J., et al. 1999. Homeobox gene Nkx2.2 and specification of neuronal identity by graded Sonic hedgehog signalling. *Nature* 398: 622-627.
2. Zhou, Q., et al. 2000. Identification of a novel family of oligodendrocyte lineage-specific basic helix-loop-helix transcription factors. *Neuron* 25: 331-343.
3. Takebayashi, H., et al. 2000. Dynamic expression of basic helix-loop-helix OLIG family members: implication of OLIG2 in neuron and oligodendrocyte differentiation and identification of a new member, OLIG3. *Mech. Dev.* 99: 143-148.
4. Lu, Q.R., et al. 2001. Oligodendrocyte lineage genes (OLIG) as molecular markers for human glial brain tumors. *Proc. Natl. Acad. Sci. USA* 98: 10851-10856.

## CHROMOSOMAL LOCATION

Genetic locus: OLIG1 (human) mapping to 21q22.11; Olig1 (mouse) mapping to 16 C3.3.

## SOURCE

OLIG1 (K-14) is an affinity purified rabbit polyclonal antibody raised against a peptide mapping within an internal region of OLIG1 of human origin.

## PRODUCT

Each vial contains 100 µg IgG in 1.0 ml of PBS with < 0.1% sodium azide and 0.1% gelatin.

Blocking peptide available for competition studies, sc-83740 P, (100 µg peptide in 0.5 ml PBS containing < 0.1% sodium azide and 0.2% BSA).

## STORAGE

Store at 4° C, **\*\*DO NOT FREEZE\*\***. Stable for one year from the date of shipment. Non-hazardous. No MSDS required.

## APPLICATIONS

OLIG1 (K-14) is recommended for detection of OLIG1 of mouse, rat and human origin by Western Blotting (starting dilution 1:200, dilution range 1:100-1:1000), immunoprecipitation [1-2 µg per 100-500 µg of total protein (1 ml of cell lysate)], immunofluorescence (starting dilution 1:50, dilution range 1:50-1:500) and solid phase ELISA (starting dilution 1:30, dilution range 1:30-1:3000); non cross-reactive with other OLIG family members.

OLIG1 (K-14) is also recommended for detection of OLIG1 in additional species, including bovine and porcine.

Suitable for use as control antibody for OLIG1 siRNA (h): sc-91434, OLIG1 siRNA (m): sc-38146, OLIG1 shRNA Plasmid (h): sc-91434-SH, OLIG1 shRNA Plasmid (m): sc-38146-SH, OLIG1 shRNA (h) Lentiviral Particles: sc-91434-V and OLIG1 shRNA (m) Lentiviral Particles: sc-38146-V.

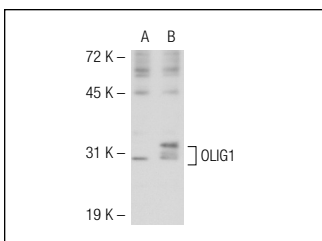
Molecular Weight of OLIG1: 30 kDa.

Positive Controls: OLIG1 (m): 293T Lysate: sc-122238.

## RECOMMENDED SECONDARY REAGENTS

To ensure optimal results, the following support (secondary) reagents are recommended: 1) Western Blotting: use goat anti-rabbit IgG-HRP: sc-2004 (dilution range: 1:2000-1:100,000) or Cruz Marker™ compatible goat anti-rabbit IgG-HRP: sc-2030 (dilution range: 1:2000-1:5000), Cruz Marker™ Molecular Weight Standards: sc-2035, TBS Blotto A Blocking Reagent: sc-2333 and Western Blotting Luminol Reagent: sc-2048. 2) Immunoprecipitation: use Protein A/G PLUS-Agarose: sc-2003 (0.5 ml agarose/2.0 ml). 3) Immunofluorescence: use goat anti-rabbit IgG-FITC: sc-2012 (dilution range: 1:100-1:400) or goat anti-rabbit IgG-TR: sc-2780 (dilution range: 1:100-1:400) with UltraCruz™ Mounting Medium: sc-24941.

## DATA



OLIG1 (K-14): sc-83740. Western blot analysis of OLIG1 expression in non-transfected: sc-117752 (A) and mouse OLIG1 transfected: sc-122238 (B) 293T whole cell lysates.

## RESEARCH USE

For research use only, not for use in diagnostic procedures.

**MONOS**  
Satisfaction  
Guaranteed

Try **OLIG1 (G-3): sc-166256** or **OLIG1 (E-12): sc-166257**, our highly recommended monoclonal alternatives to OLIG1 (K-14).