

KRTAP10 (N-12): sc-83887

BACKGROUND

Hair is a structure that is unique to mammals. It plays an important role in the retention of heat, as well as sexual dimorphism, attraction of mates and protection of skin. The major components of hair are α -keratins and keratin-associated proteins (KRTAPs or KAPs), each of which are encoded by multi-gene families. Hair keratins form an intermediate filament (IF) network, which is embedded in an interfilamentous matrix consisting of KRTAPs. KRTAPs comprise three major groups, which are essential for the formation of rigid and resistant hair shafts through disulfide bond cross-linking or hydrophobic interactions with keratins. These groups are designated high cysteine (HS), which includes subfamilies 1, 2, 3, 10, 12, 16, 29 and 31, ultrahigh cysteine, including subfamilies 4, 5, 9, 17, 28, 30, 32 and 33, and high glycine-tyrosine (HGT), which includes subfamilies 6, 7, 8, 19, 20 and 21. In addition, subfamilies 11, 13, 24-27, 29, 34 and 35 have high serine content but relative low cysteine content. After further phylogenetic studies, subfamilies 14 and 15 have been grouped with subfamily 13 and subfamily 22 was combined with subfamily 19.

REFERENCES

- Powell, B.C., Nesci, A. and Rogers, G.E. 1991. Regulation of keratin gene expression in hair follicle differentiation. *Ann. N.Y. Acad. Sci.* 642: 1-20.
- Emonet, N., Michaille, J.J. and Dhouailly, D. 1997. Isolation and characterization of genomic clones of human sequences presumably coding for hair cysteine-rich proteins. *J. Dermatol. Sci.* 14: 1-11.
- Langbein, L., Rogers, M.A., Winter, H., Praetzel, S., Beckhaus, U., Rackwitz, H.R. and Schweizer, J. 1999. The catalog of human hair keratins. I. Expression of the nine type I members in the hair follicle. *J. Biol. Chem.* 274: 19874-19884.
- Langbein, L., Rogers, M.A., Winter, H., Praetzel, S. and Schweizer, J. 2001. The catalog of human hair keratins. II. Expression of the six type II members in the hair follicle and the combined catalog of human type I and II keratins. *J. Biol. Chem.* 276: 35123-35132.
- Maderson, P.F. 2003. Mammalian skin evolution: a reevaluation. *Exp. Dermatol.* 12: 233-236.
- Shimomura, Y. and Ito, M. 2005. Human hair keratin-associated proteins. *J. Investig. Dermatol. Symp. Proc.* 10: 230-233.
- Rogers, M.A., Langbein, L., Praetzel-Wunder, S., Winter, H. and Schweizer, J. 2006. Human hair keratin-associated proteins (KAPs). *Int. Rev. Cytol.* 251: 209-263.
- Wu, D.D., Irwin, D.M. and Zhang, Y.P. 2008. Molecular evolution of the keratin associated protein gene family in mammals, role in the evolution of mammalian hair. *BMC Evol. Biol.* 8: 241.

CHROMOSOMAL LOCATION

Genetic locus: KRTAP10-1 (human) mapping to 21q22.3.

STORAGE

Store at 4° C, ****DO NOT FREEZE****. Stable for one year from the date of shipment. Non-hazardous. No MSDS required.

SOURCE

KRTAP10 (N-12) is an affinity purified rabbit polyclonal antibody raised against a peptide mapping near the N-terminus of KRTAP10-1 of human origin.

PRODUCT

Each vial contains 100 μ g IgG in 1.0 ml of PBS with < 0.1% sodium azide and 0.1% gelatin.

Blocking peptide available for competition studies, sc-83887 P, (100 μ g peptide in 0.5 ml PBS containing < 0.1% sodium azide and 0.2% BSA).

APPLICATIONS

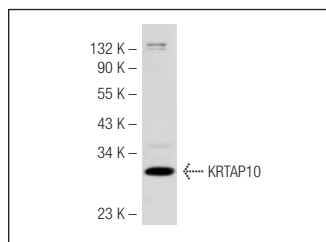
KRTAP10 (N-12) is recommended for detection of KRTAP10-1, 3, 4, 6, 7, 9, 11, 12 and, to a lesser extent, KRTAP10-2, 5, 8 and 10 of human origin by Western Blotting (starting dilution 1:200, dilution range 1:100-1:1000), immunoprecipitation [1-2 μ g per 100-500 μ g of total protein (1 ml of cell lysate)], immunofluorescence (starting dilution 1:50, dilution range 1:50-1:500) and solid phase ELISA (starting dilution 1:30, dilution range 1:30-1:3000).

Suitable for use as control antibody for KRTAP10-1 siRNA (h): sc-91521, KRTAP10-1 shRNA Plasmid (h): sc-91521-SH and KRTAP10-1 shRNA (h) Lentiviral Particles: sc-91521-V.

Molecular Weight of KRTAP10: 29 kDa.

Positive Controls: Caco-2 cell lysate: sc-2262.

DATA



KRTAP10 (N-12): sc-83887. Western blot analysis of KRTAP10 expression in Caco-2 whole cell lysate.

RESEARCH USE

For research use only, not for use in diagnostic procedures.

PROTOCOLS

See our web site at www.scbt.com or our catalog for detailed protocols and support products.