

P2RY8 (C-20): sc-83934

BACKGROUND

G protein-coupled receptors (GPRs), also known as seven transmembrane receptors, heptahelical receptors or 7TM receptors, comprise a superfamily of proteins that play a role in many different stimulus-response pathways. G protein-coupled receptors translate extracellular signals into intracellular signals (G protein activation) and they respond to a variety of signaling molecules, such as hormones and neurotransmitters. P2RY8 (purinergic receptor P2Y, G protein-coupled, 8), also known as P2Y8, is a 359 amino acid multi-pass membrane protein that localizes to the cell membrane and belongs to the G protein-coupled receptor family. Expressed at low levels in lung, heart and kidney, P2RY8 may function as a receptor for purines that are coupled to G proteins and may also play a role in mental retardation.

REFERENCES

- Adrian, K., Bernhard, M.K., Breiting, H.G. and Ogilvie, A. 2000. Expression of purinergic receptors (ionotropic P2X1-7 and metabotropic P2Y1-11) during myeloid differentiation of HL-60 cells. *Biochim. Biophys. Acta* 1492: 127-138.
- Online Mendelian Inheritance in Man, OMIM™. 2002. Johns Hopkins University, Baltimore, MD. MIM Number: 300525. World Wide Web URL: <http://www.ncbi.nlm.nih.gov/omim/>
- Cantagrel, V., Lossi, A.M., Boulanger, S., Depetris, D., Mattei, M.G., Gecz, J., Schwartz, C.E., Van Maldergem, L. and Villard, L. 2004. Disruption of a new X linked gene highly expressed in brain in a family with two mentally retarded males. *J. Med. Genet.* 41: 736-742.
- Fujiwara, S., Yamashita, Y., Choi, Y.L., Watanabe, H., Kurashina, K., Soda, M., Enomoto, M., Hatanaka, H., Takada, S., Ozawa, K. and Mano, H. 2007. Transforming activity of purinergic receptor P2Y, G protein-coupled, 8 revealed by retroviral expression screening. *Leuk. Lymphoma* 48: 978-986.
- Storlazzi, C.T., Albano, F., Lo Cunsolo, C., Doglioni, C., Guastadisegni, M.C., Impera, L., Lonoce, A., Funes, S., Macrì, E., Iuzzolino, P., Panagopoulos, I., Specchia, G. and Rocchi, M. 2007. Upregulation of the Sox-5 by promoter swapping with the P2RY8 gene in primary splenic follicular lymphoma. *Leukemia* 21: 2221-2225.

CHROMOSOMAL LOCATION

Genetic locus: P2RY8 (human) mapping to Xp22.33, Yp11.32.

SOURCE

P2RY8 (C-20) is an affinity purified rabbit polyclonal antibody raised against a peptide mapping within a C-terminal cytoplasmic domain of P2RY8 of human origin.

STORAGE

Store at 4° C, ****DO NOT FREEZE****. Stable for one year from the date of shipment. Non-hazardous. No MSDS required.

PROTOCOLS

See our web site at www.scbt.com or our catalog for detailed protocols and support products.

PRODUCT

Each vial contains 100 µg IgG in 1.0 ml of PBS with < 0.1% sodium azide and 0.1% gelatin.

Blocking peptide available for competition studies, sc-83934 P, (100 µg peptide in 0.5 ml PBS containing < 0.1% sodium azide and 0.2% BSA).

APPLICATIONS

P2RY8 (C-20) is recommended for detection of P2RY8 of human origin by Western Blotting (starting dilution 1:200, dilution range 1:100-1:1000), immunoprecipitation [1-2 µg per 100-500 µg of total protein (1 ml of cell lysate)], immunofluorescence (starting dilution 1:50, dilution range 1:50-1:500) and solid phase ELISA (starting dilution 1:30, dilution range 1:30-1:3000).

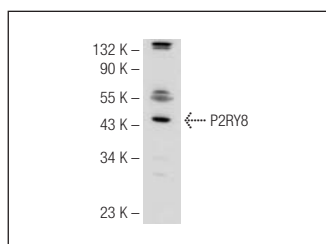
Suitable for use as control antibody for P2RY8 siRNA (h): sc-91574, P2RY8 shRNA Plasmid (h): sc-91574-SH and P2RY8 shRNA (h) Lentiviral Particles: sc-91574-V.

Molecular Weight of P2RY8: 41 kDa.

RECOMMENDED SECONDARY REAGENTS

To ensure optimal results, the following support (secondary) reagents are recommended: 1) Western Blotting: use goat anti-rabbit IgG-HRP: sc-2004 (dilution range: 1:2000-1:100,000) or Cruz Marker™ compatible goat anti-rabbit IgG-HRP: sc-2030 (dilution range: 1:2000-1:5000), Cruz Marker™ Molecular Weight Standards: sc-2035, TBS Blotto A Blocking Reagent: sc-2333 and Western Blotting Luminol Reagent: sc-2048. 2) Immunoprecipitation: use Protein A/G PLUS-Agarose: sc-2003 (0.5 ml agarose/2.0 ml). 3) Immunofluorescence: use goat anti-rabbit IgG-FITC: sc-2012 (dilution range: 1:100-1:400) or goat anti-rabbit IgG-TR: sc-2780 (dilution range: 1:100-1:400) with UltraCruz™ Mounting Medium: sc-24941.

DATA



P2RY8 (C-20): sc-83934. Western blot analysis of P2RY8 expression in Jurkat whole cell lysate.

RESEARCH USE

For research use only, not for use in diagnostic procedures.