

ZBED1 (K-19): sc-83957



The Power to Question

BACKGROUND

ZBED1 (zinc finger BED domain-containing protein 1), also known as ALTE (Ac-like transposable element), DREF or TRAMP, is a 694 amino acid protein that localizes specifically to granular structures within the nucleus. Expressed ubiquitously at low levels and present at higher levels in heart, placenta, spleen and skeletal muscle, ZBED1 is thought to function as a transcription factor that regulates a number of ribosomal protein (RP) encoding genes, thereby playing a role in the cell cycle and in cell proliferation events. ZBED1 contains one BED-type zinc finger and binds specifically to 5'-TGTCG[CT]GA [CT] A-3' DNA regions found in RP promoters. Additionally, ZBED1 binds strongly to the promoter region of Histone H1 (a protein required for the condensation of nucleosomes into higher order structures), subsequently activating H1 transcription.

REFERENCES

- Oosumi, T., Belknap, W.R. and Garlick, B. 1995. Mariner transposons in humans. *Nature* 378: 672.
- Nagase, T., Ishikawa, K., Suyama, M., Kikuno, R., Miyajima, N., Tanaka, A., Kotani, H., Nomura, N. and Ohara, O. 1998. Prediction of the coding sequences of unidentified human genes. XI. The complete sequences of 100 new cDNA clones from brain which code for large proteins *in vitro*. *DNA Res.* 5: 277-286.
- Eposito, T., Gianfrancesco, F., Ciccodicola, A., Montanini, L., Mumm, S., D'Urso, M. and Forabosco, A. 1999. A novel pseudoautosomal human gene encodes a putative protein similar to Ac-like transposases. *Hum. Mol. Genet.* 8: 61-67.
- Online Mendelian Inheritance in Man, OMIM™. 2002. Johns Hopkins University, Baltimore, MD. MIM Number: 300178. World Wide Web URL: <http://www.ncbi.nlm.nih.gov/omim/>
- Ohshima, N., Takahashi, M. and Hirose, F. 2003. Identification of a human homologue of the DREF transcription factor with a potential role in regulation of the Histone H1 gene. *J. Biol. Chem.* 278: 22928-22938.

CHROMOSOMAL LOCATION

Genetic locus: ZBED1 (human) mapping to Xp22.33/Yp11.31.

SOURCE

ZBED1 (K-19) is an affinity purified rabbit polyclonal antibody raised against a peptide mapping near the C-terminus of ZBED1 of human origin.

PRODUCT

Each vial contains 100 µg IgG in 1.0 ml of PBS with < 0.1% sodium azide and 0.1% gelatin.

Blocking peptide available for competition studies, sc-83957 P, (100 µg peptide in 0.5 ml PBS containing < 0.1% sodium azide and 0.2% BSA).

STORAGE

Store at 4° C, ****DO NOT FREEZE****. Stable for one year from the date of shipment. Non-hazardous. No MSDS required.

APPLICATIONS

ZBED1 (K-19) is recommended for detection of ZBED1 of human origin by Western Blotting (starting dilution 1:200, dilution range 1:100-1:1000), immunoprecipitation [1-2 µg per 100-500 µg of total protein (1 ml of cell lysate)], immunofluorescence (starting dilution 1:50, dilution range 1:50-1:500) and solid phase ELISA (starting dilution 1:30, dilution range 1:30-1:3000).

ZBED1 (K-19) is also recommended for detection of ZBED1 in additional species, including equine, canine, bovine and avian.

Suitable for use as control antibody for ZBED1 siRNA (h): sc-91580, ZBED1 shRNA Plasmid (h): sc-91580-SH and ZBED1 shRNA (h) Lentiviral Particles: sc-91580-V.

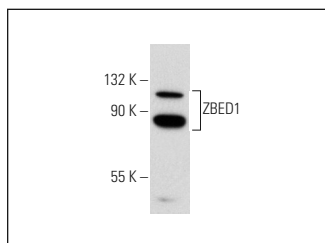
Molecular Weight of ZBED1: 86 kDa.

Positive Controls: HeLa nuclear extract: sc-2120.

RECOMMENDED SECONDARY REAGENTS

To ensure optimal results, the following support (secondary) reagents are recommended: 1) Western Blotting: use goat anti-rabbit IgG-HRP: sc-2004 (dilution range: 1:2000-1:100,000) or Cruz Marker™ compatible goat anti-rabbit IgG-HRP: sc-2030 (dilution range: 1:2000-1:5000), Cruz Marker™ Molecular Weight Standards: sc-2035, TBS Blotto A Blocking Reagent: sc-2333 and Western Blotting Luminol Reagent: sc-2048. 2) Immunoprecipitation: use Protein A/G PLUS-Agarose: sc-2003 (0.5 ml agarose/2.0 ml). 3) Immunofluorescence: use goat anti-rabbit IgG-FITC: sc-2012 (dilution range: 1:100-1:400) or goat anti-rabbit IgG-TR: sc-2780 (dilution range: 1:100-1:400) with UltraCruz™ Mounting Medium: sc-24941.

DATA



ZBED1 (K-19): sc-83957. Western blot analysis of ZBED1 expression in 293T whole cell lysate.

RESEARCH USE

For research use only, not for use in diagnostic procedures.

PROTOCOLS

See our web site at www.scbt.com or our catalog for detailed protocols and support products.