

# LOC646482 (P-17): sc-84126

## BACKGROUND

Comprising nearly 4% of human DNA, chromosome 13 contains around 114 million base pairs and 400 genes. Key tumor suppressor genes on chromosome 13 include the breast cancer susceptibility gene, BRCA2, and the RB1 (retinoblastoma) gene. RB1 encodes a crucial tumor suppressor protein which, when defective, leads to malignant growth in the retina and has been implicated in a variety of other cancers. The gene SLITRK1, which is associated with Tourette syndrome, is on chromosome 13. As with most chromosomes, polysomy of part or all of chromosome 13 is deleterious to development and decreases the odds of survival. Trisomy 13, also known as Patau syndrome, is quite deadly and the few who survive past one year suffer from permanent neurologic defects, difficulty eating and vulnerability to serious respiratory infections. The LOC646482 gene product has been provisionally designated LOC646482 pending further characterization.

## REFERENCES

- Dunham, A., Matthews, L.H., Burton, J., Ashurst, J.L., Howe, K.L., Ashcroft, K.J., Beare, D.M., Burford, D.C., Hunt, S.E., Griffiths-Jones, S., Jones, M.C., Keenan, S.J., Oliver, K, et al. 2004. The DNA sequence and analysis of human chromosome 13. *Nature* 428: 522-528.
- Deng, H., Le, W.D., Xie, W.J. and Jankovic, J. 2006. Examination of the SLITRK1 gene in Caucasian patients with Tourette syndrome. *Acta Neurol. Scand.* 114: 400-402.
- Giacinti, C. and Giordano, A. 2006. RB and cell cycle progression. *Oncogene* 25: 5220-5227.
- Grados, M.A. and Walkup, J.T. 2006. A new gene for Tourette's syndrome: a window into causal mechanisms? *Trends Genet.* 22: 291-293.
- Bugge, M., Collins, A., Hertz, J.M., Eiberg, H., Lundsteen, C., Brandt, C.A., Bak, M., Hansen, C., Delozier, C.D., Lespinasse, J., Tranebjaerg, L., Hahne-mann, J.M., Rasmussen, K., Bruun-Petersen, G., Duprez, L., Tommerup, N. and Petersen, M.B. 2007. Non-disjunction of chromosome 13. *Hum. Mol. Genet.* 16: 2004-2010.
- Hall, H.E., Chan, E.R., Collins, A., Judis, L., Shirley, S., Surti, U., Hoffner, L., Cockwell, A.E., Jacobs, P.A. and Hassold, T.J. 2007. The origin of trisomy 13. *Am. J. Med. Genet. A* 143: 2242-2248.
- Hassler, M., Singh, S., Yue, W.W., Luczynski, M., Lakbir, R., Sanchez-Sanchez, F., Bader, T., Pearl, L.H. and Mitnacht, S. 2007. Crystal structure of the retinoblastoma protein N domain provides insight into tumor suppression, ligand interaction and holoprotein architecture. *Mol. Cell* 28: 371-385.
- Hsu, H.F. and Hou, J.W. 2007. Variable expressivity in Patau syndrome is not all related to trisomy 13 mosaicism. *Am. J. Med. Genet. A* 143: 1739-1748.
- Thorslund, T. and West, S.C. 2007. BRCA2: a universal recombinase regulator. *Oncogene* 26: 7720-7730.

## STORAGE

Store at 4° C, **\*\*DO NOT FREEZE\*\***. Stable for one year from the date of shipment. Non-hazardous. No MSDS required.

## CHROMOSOMAL LOCATION

Genetic locus: LOC646482 (human) mapping to 13q12.13.

## SOURCE

LOC646482 (P-17) is an affinity purified rabbit polyclonal antibody raised against a peptide mapping within an internal region of LOC646482 of human origin.

## PRODUCT

Each vial contains 100 µg IgG in 1.0 ml of PBS with < 0.1% sodium azide and 0.1% gelatin.

Blocking peptide available for competition studies, sc-84126 P, (100 µg peptide in 0.5 ml PBS containing < 0.1% sodium azide and 0.2% BSA).

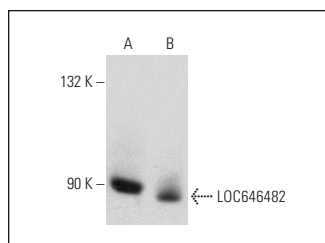
## APPLICATIONS

LOC646482 (P-17) is recommended for detection of LOC646482 of human origin by Western Blotting (starting dilution 1:200, dilution range 1:100-1:1000), immunoprecipitation [1-2 µg per 100-500 µg of total protein (1 ml of cell lysate)], immunofluorescence (starting dilution 1:50, dilution range 1:50-1:500) and solid phase ELISA (starting dilution 1:30, dilution range 1:30-1:3000).

Suitable for use as control antibody for LOC646482 siRNA (h): sc-105888, LOC646482 shRNA Plasmid (h): sc-105888-SH and LOC646482 shRNA (h) Lentiviral Particles: sc-105888-V.

Positive Controls: K-562 whole cell lysate: sc-2203 or HeLa whole cell lysate: sc-2200.

## DATA



LOC646482 (P-17): sc-84126. Western blot analysis of LOC646482 expression in HeLa (A) and K-562 (B) whole cell lysates.

## RESEARCH USE

For research use only, not for use in diagnostic procedures.

## PROTOCOLS

See our web site at [www.scbt.com](http://www.scbt.com) or our catalog for detailed protocols and support products.