

# IRG1 (C-18): sc-84189

## BACKGROUND

IRG1 (immunoresponsive 1) is a 481 amino acid protein that belongs to the prpD family and is encoded by a gene which maps to human chromosome 13q22.3. Comprising nearly 4% of the human genome, chromosome 13 contains around 114 million base pairs and encodes over 400 genes. Chromosome 13 houses key tumor suppressor genes, including BRCA2 and RB1, which are associated with breast cancer susceptibility and retinoblastoma, respectively. Trisomy 13, also known as Patau syndrome, is deadly and the few who survive past one year suffer from permanent neurologic defects, difficulty eating and vulnerability to serious respiratory infections.

## REFERENCES

- Dunham, A., Matthews, L.H., Burton, J., Ashurst, J.L., Howe, K.L., Ashcroft, K.J., Beare, D.M., Burford, D.C., Hunt, S.E., Griffiths-Jones, S., Jones, M.C., Keenan, S.J., Oliver, K, et al. 2004. The DNA sequence and analysis of human chromosome 13. *Nature* 428: 522-528.
- Deng, H., Le, W.D., Xie, W.J. and Jankovic, J. 2006. Examination of the SLITRK1 gene in Caucasian patients with Tourette syndrome. *Acta Neurol. Scand.* 114: 400-402.
- Giacinti, C. and Giordano, A. 2006. RB and cell cycle progression. *Oncogene* 25: 5220-5227.
- Grados, M.A. and Walkup, J.T. 2006. A new gene for Tourette's syndrome: a window into causal mechanisms? *Trends Genet.* 22: 291-293.
- Bugge, M., Collins, A., Hertz, J.M., Eiberg, H., Lundsteen, C., Brandt, C.A., Bak, M., Hansen, C., Delozier, C.D., Lespinasse, J., Tranebjaerg, L., Hahnemann, J.M., Rasmussen, K., Bruun-Petersen, G., Duprez, L., Tommerup, N. and Petersen, M.B. 2007. Non-disjunction of chromosome 13. *Hum. Mol. Genet.* 16: 2004-2010.
- Hsu, H.F. and Hou, J.W. 2007. Variable expressivity in Patau syndrome is not all related to trisomy 13 mosaicism. *Am. J. Med. Genet. A* 143A: 1739-1748.
- Hassler, M., Singh, S., Yue, W.W., Luczynski, M., Lakbir, R., Sanchez-Sanchez, F., Bader, T., Pearl, L.H. and Mittnacht, S. 2007. Crystal structure of the retinoblastoma protein N domain provides insight into tumor suppression, ligand interaction and holoprotein architecture. *Mol. Cell* 28: 371-385.
- Hall, H.E., Chan, E.R., Collins, A., Judis, L., Shirley, S., Surti, U., Hoffner, L., Cockwell, A.E., Jacobs, P.A. and Hassold, T.J. 2007. The origin of trisomy 13. *Am. J. Med. Genet. A* 143A: 2242-2248.
- Thorslund, T. and West, S.C. 2007. BRCA2: a universal recombinase regulator. *Oncogene* 26: 7720-7730.

## CHROMOSOMAL LOCATION

Genetic locus: IRG1 (human) mapping to 13q22.3.

## SOURCE

IRG1 (C-18) is an affinity purified rabbit polyclonal antibody raised against a peptide mapping at the C-terminus of IRG1 of human origin.

## PRODUCT

Each vial contains 100 µg IgG in 1.0 ml of PBS with < 0.1% sodium azide and 0.1% gelatin.

Blocking peptide available for competition studies, sc-84189 P, (100 µg peptide in 0.5 ml PBS containing < 0.1% sodium azide and 0.2% BSA).

## APPLICATIONS

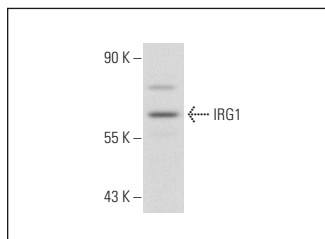
IRG1 (C-18) is recommended for detection of IRG1 of human origin by Western Blotting (starting dilution 1:200, dilution range 1:100-1:1000), immunoprecipitation [1-2 µg per 100-500 µg of total protein (1 ml of cell lysate)], immunofluorescence (starting dilution 1:50, dilution range 1:50-1:500) and solid phase ELISA (starting dilution 1:30, dilution range 1:30-1:3000).

Suitable for use as control antibody for IRG1 siRNA (h): sc-106177, IRG1 shRNA Plasmid (h): sc-106177-SH and IRG1 shRNA (h) Lentiviral Particles: sc-106177-V.

Molecular Weight of IRG1: 53 kDa.

Positive Controls: K-562 whole cell lysate: sc-2203.

## DATA



IRG1 (C-18): sc-84189. Western blot analysis of IRG1 expression in K-562 whole cell lysate.

## STORAGE

Store at 4° C, **\*\*DO NOT FREEZE\*\***. Stable for one year from the date of shipment. Non-hazardous. No MSDS required.

## RESEARCH USE

For research use only, not for use in diagnostic procedures.

## PROTOCOLS

See our web site at [www.scbt.com](http://www.scbt.com) or our catalog for detailed protocols and support products.