

LRCH1 (N-17): sc-84196

BACKGROUND

Members of the leucine-rich repeat family include LRCH1, LRCH2, LRCH3 and LRCH4. All family members contain one calponin-homology domain and nine leucine-rich repeats. The gene encoding LRCH1, also known as Neuronal protein 81 (NP81), has been suggested to be a possible gene locus for susceptibility to osteoarthritis, especially in women, though studies have shown conflicting results. LRCH1 is a 728 amino acid protein that is expressed at highest levels in cerebellum, with lower levels of expression in spinal cord, ovary, kidney and amygdala. In pigs, the gene encoding LRCH1 is one of 22 genes that is associated with leg and body conformation traits that affect productivity and health. There are two isoforms of LRCH1 that are expressed as a result of alternative splicing events.

REFERENCES

1. Hamano, S., Ohira, M., Isogai, E., Nakada, K. and Nakagawara, A. 2004. Identification of novel human neuronal leucine-rich repeat (hNLRR) family genes and inverse association of expression of Nbla10449/hNLRR-1 and Nbla10677/hNLRR-3 with the prognosis of primary neuroblastomas. *Int. J. Oncol.* 24: 1457-1466.
2. Haines, B.P., Gupta, R., Jones, C.M., Summerbell, D. and Rigby, P.W. 2005. The NLRR gene family and mouse development: Modified differential display PCR identifies NLRR-1 as a gene expressed in early somitic myoblasts. *Dev. Biol.* 281: 145-159.
3. Bando, T., Sekine, K., Kobayashi, S., Watabe, A.M., Rump, A., Tanaka, M., Suda, Y., Kato, S., Morikawa, Y., Manabe, T. and Miyajima, A. 2005. Neuronal leucine-rich repeat protein 4 functions in hippocampus-dependent long-lasting memory. *Mol. Cell. Biol.* 25: 4166-4175.
4. Spector, T.D., Reneland, R.H., Mah, S., Valdes, A.M., Hart, D.J., Kammerer, S., Langdown, M., Hoyal, C.R., Atienza, J., Doherty, M., Rahman, P., Nelson, M.R. and Braun, A. 2006. Association between a variation in LRCH1 and knee osteoarthritis: a genome-wide single-nucleotide polymorphism association study using DNA pooling. *Arthritis Rheum.* 54: 524-532.
5. García-Calero, E., Garda, A.L., Marín, F. and Puelles, L. 2006. Expression of Lrrn1 marks the prospective site of the zona limitans thalami in the early embryonic chicken diencephalon. *Gene Expr. Patterns* 6: 879-885.

CHROMOSOMAL LOCATION

Genetic locus: LRCH1 (human) mapping to 13q14.13; Lrch1 (mouse) mapping to 14 D3.

SOURCE

LRCH1 (N-17) is an affinity purified rabbit polyclonal antibody raised against a peptide mapping at the N-terminus of LRCH1 of human origin.

PRODUCT

Each vial contains 100 µg IgG in 1.0 ml of PBS with < 0.1% sodium azide and 0.1% gelatin.

Blocking peptide available for competition studies, sc-84196 P, (100 µg peptide in 0.5 ml PBS containing < 0.1% sodium azide and 0.2% BSA).

APPLICATIONS

LRCH1 (N-17) is recommended for detection of LRCH1 of mouse, rat and human origin by Western Blotting (starting dilution 1:200, dilution range 1:100-1:1000), immunoprecipitation [1-2 µg per 100-500 µg of total protein (1 ml of cell lysate)], immunofluorescence (starting dilution 1:50, dilution range 1:50-1:500) and solid phase ELISA (starting dilution 1:30, dilution range 1:30-1:3000); non cross-reactive with LRCH1-b, LRCH1-a.

LRCH1 (N-17) is also recommended for detection of LRCH1 in additional species, including equine.

Suitable for use as control antibody for LRCH1 siRNA (h): sc-106182, LRCH1 siRNA (m): sc-149030, LRCH1 shRNA Plasmid (h): sc-106182-SH, LRCH1 shRNA Plasmid (m): sc-149030-SH, LRCH1 shRNA (h) Lentiviral Particles: sc-106182-V and LRCH1 shRNA (m) Lentiviral Particles: sc-149030-V.

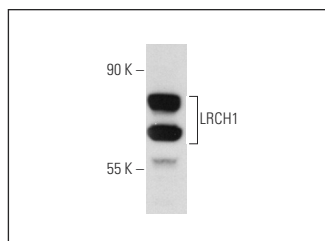
Molecular Weight of LRCH1: 81/77 kDa.

Positive Controls: HeLa whole cell lysate: sc-2200.

RECOMMENDED SECONDARY REAGENTS

To ensure optimal results, the following support (secondary) reagents are recommended: 1) Western Blotting: use goat anti-rabbit IgG-HRP: sc-2004 (dilution range: 1:2000-1:100,000) or Cruz Marker™ compatible goat anti-rabbit IgG-HRP: sc-2030 (dilution range: 1:2000-1:5000), Cruz Marker™ Molecular Weight Standards: sc-2035, TBS Blotto A Blocking Reagent: sc-2333 and Western Blotting Luminol Reagent: sc-2048. 2) Immunoprecipitation: use Protein A/G PLUS-Agarose: sc-2003 (0.5 ml agarose/2.0 ml). 3) Immunofluorescence: use goat anti-rabbit IgG-FITC: sc-2012 (dilution range: 1:100-1:400) or goat anti-rabbit IgG-TR: sc-2780 (dilution range: 1:100-1:400) with UltraCruz™ Mounting Medium: sc-24941.

DATA



LRCH1 (N-17): sc-84196. Western blot analysis of LRCH1 expression in HeLa whole cell lysate.

STORAGE

Store at 4° C, ****DO NOT FREEZE****. Stable for one year from the date of shipment. Non-hazardous. No MSDS required.

RESEARCH USE

For research use only, not for use in diagnostic procedures.