

Ribosomal Protein L21 (N-20): sc-84598

BACKGROUND

Ribosomes, the organelles that catalyze protein synthesis, are composed of a small subunit (40S) and a large subunit (60S) that consist of over 80 distinct ribosomal proteins. Mammalian ribosomal proteins are encoded by multigene families that contain processed pseudogenes and one functional intron-containing gene within their coding regions. Ribosomal Protein L21, whose alternative names include 60S Ribosomal Protein L21, DKFZp686C06101, L21, FLJ27458, MGC104275, MGC71252 or MGC104274, is a 160 amino acid protein belonging to the ribosomal protein L21e family. Ribosomal Protein L21 localizes to cytoplasm and like most ribosomal proteins, Ribosomal Protein L21 exists as multiple processed pseudogenes that are scattered throughout the genome. The gene encoding Ribosomal Protein L21 maps to human chromosome 13q12.2.

CHROMOSOMAL LOCATION

Genetic locus: RPL21 (human) mapping to 13q12.2.

SOURCE

Ribosomal Protein L21 (N-20) is an affinity purified goat polyclonal antibody raised against a peptide mapping at the N-terminus of Ribosomal Protein L21 of human origin.

PRODUCT

Each vial contains 200 µg IgG in 1.0 ml of PBS with < 0.1% sodium azide and 0.1% gelatin.

Blocking peptide available for competition studies, sc-84598 P, (100 µg peptide in 0.5 ml PBS containing < 0.1% sodium azide and 0.2% BSA).

STORAGE

Store at 4° C, ****DO NOT FREEZE****. Stable for one year from the date of shipment. Non-hazardous. No MSDS required.

APPLICATIONS

Ribosomal Protein L21 (N-20) is recommended for detection of Ribosomal Protein L21 of human origin by Western Blotting (starting dilution 1:200, dilution range 1:100-1:1000), immunoprecipitation [1-2 µg per 100-500 µg of total protein (1 ml of cell lysate)], immunofluorescence (starting dilution 1:50, dilution range 1:50-1:500) and solid phase ELISA (starting dilution 1:30, dilution range 1:30-1:3000); non cross-reactive with other RPL family members.

Ribosomal Protein L21 (N-20) is also recommended for detection of Ribosomal Protein L21 in additional species, including equine, canine, bovine, porcine and avian.

Suitable for use as control antibody for Ribosomal Protein L21 siRNA (h): sc-76432, Ribosomal Protein L21 shRNA Plasmid (h): sc-76432-SH and Ribosomal Protein L21 shRNA (h) Lentiviral Particles: sc-76432-V.

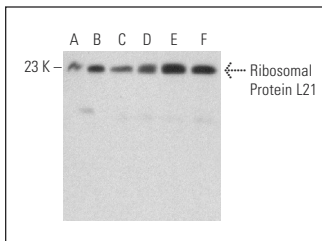
Molecular Weight of Ribosomal Protein L21: 18 kDa.

Positive Controls: Daudi cell lysate: sc-2415, Jurkat whole cell lysate: sc-2204 or BJAB whole cell lysate: sc-2207.

RECOMMENDED SECONDARY REAGENTS

To ensure optimal results, the following support (secondary) reagents are recommended: 1) Western Blotting: use donkey anti-goat IgG-HRP: sc-2020 (dilution range: 1:2000-1:100,000) or Cruz Marker™ compatible donkey anti-goat IgG-HRP: sc-2033 (dilution range: 1:2000-1:5000), Cruz Marker™ Molecular Weight Standards: sc-2035, TBS Blotto A Blocking Reagent: sc-2333 and Western Blotting Luminol Reagent: sc-2048. 2) Immunoprecipitation: use Protein A/G PLUS-Agarose: sc-2003 (0.5 ml agarose/2.0 ml). 3) Immunofluorescence: use donkey anti-goat IgG-FITC: sc-2024 (dilution range: 1:100-1:400) or donkey anti-goat IgG-TR: sc-2783 (dilution range: 1:100-1:400) with UltraCruz™ Mounting Medium: sc-24941.

DATA



Ribosomal Protein L21 (N-20): sc-84598. Western blot analysis of Ribosomal Protein L21 expression in Daudi (A), Jurkat (B), Raji (C), BJAB (D), HeLa (E) and NAMALWA (F) whole cell lysates.

RESEARCH USE

For research use only, not for use in diagnostic procedures.

PROTOCOLS

See our web site at www.scbt.com or our catalog for detailed protocols and support products.



Try **Ribosomal Protein L21 (D-7): sc-393663**, our highly recommended monoclonal alternative to Ribosomal Protein L21 (N-20).