

SOHLH2 (P-18): sc-84609

BACKGROUND

SOHLH2 (spermatogenesis and oogenesis specific basic helix-loop-helix 2), also known as TEB1, is a 425 amino acid nuclear protein that contains one basic helix-loop-helix (bHLH) domain through which it may function as a transcription factor during oogenesis and spermatogenesis. SOHLH2 exists as two alternatively spliced isoforms that are encoded by a gene which maps to human chromosome 13q13.3. Chromosome 13 houses over 400 genes, such as BRCA2 and RB1, and comprises nearly 4% of the human genome. Trisomy 13, also known as Patau syndrome, is deadly and the few who survive past one year suffer from permanent neurologic defects, difficulty eating and vulnerability to serious respiratory infections.

REFERENCES

1. Wooster, R., Neuhausen, S.L., Mangion, J., Quirk, Y., Ford, D., Collins, N., Nguyen, K., Seal, S., Tran, T. and Averill, D. 1994. Localization of a breast cancer susceptibility gene, BRCA2, to chromosome 13q12-13. *Science* 265: 2088-2090.
2. Kimura, K., Wakamatsu, A., Suzuki, Y., Ota, T., Nishikawa, T., Yamashita, R., Yamamoto, J., Sekine, M., Tsuritani, K., Wakaguri, H., Ishii, S., Sugiyama, T., Saito, K., Isono, Y., Irie, R., Kushida, N., Yoneyama, T., et al. 2006. Diversification of transcriptional modulation: large-scale identification and characterization of putative alternative promoters of human genes. *Genome Res.* 16: 55-65.
3. Hsu, H.F. and Hou, J.W. 2007. Variable expressivity in Patau syndrome is not all related to trisomy 13 mosaicism. *Am. J. Med. Genet. A* 143A: 1739-1748.
4. Hall, H.E., Chan, E.R., Collins, A., Judis, L., Shirley, S., Surti, U., Hoffner, L., Cockwell, A.E., Jacobs, P.A. and Hassold, T.J. 2007. The origin of trisomy 13. *Am. J. Med. Genet. A* 143A: 2242-2248.
5. Bugge, M., Collins, A., Hertz, J.M., Eiberg, H., Lundsteen, C., Brandt, C.A., Bak, M., Hansen, C., Delozier, C.D., Lespinasse, J., Tranebjaerg, L., Hahne-mann, J.M., Rasmussen, K., Bruun-Petersen, G., Duprez, L., et al. 2007. Non-disjunction of chromosome 13. *Hum. Mol. Genet.* 16: 2004-2010.

CHROMOSOMAL LOCATION

Genetic locus: SOHLH2 (human) mapping to 13q13.3.

SOURCE

SOHLH2 (P-18) is an affinity purified rabbit polyclonal antibody raised against a peptide mapping within an internal region of SOHLH2 of human origin.

PRODUCT

Each vial contains 100 µg IgG in 1.0 ml of PBS with < 0.1% sodium azide and 0.1% gelatin.

Blocking peptide available for competition studies, sc-84609 P, (100 µg peptide in 0.5 ml PBS containing < 0.1% sodium azide and 0.2% BSA).

APPLICATIONS

SOHLH2 (P-18) is recommended for detection of SOHLH2 of human origin by Western Blotting (starting dilution 1:200, dilution range 1:100-1:1000), immunoprecipitation [1-2 µg per 100-500 µg of total protein (1 ml of cell lysate)], immunofluorescence (starting dilution 1:50, dilution range 1:50-1:500) and solid phase ELISA (starting dilution 1:30, dilution range 1:30-1:3000); non cross-reactive with SOHLH1 family.

Suitable for use as control antibody for SOHLH2 siRNA (h): sc-76539, SOHLH2 shRNA Plasmid (h): sc-76539-SH and SOHLH2 shRNA (h) Lentiviral Particles: sc-76539-V.

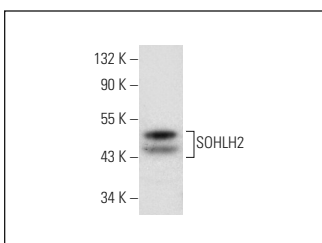
Molecular Weight of SOHLH2: 47 kDa.

Positive Controls: Hs 181 Tes whole cell lysate: sc-364779.

RECOMMENDED SECONDARY REAGENTS

To ensure optimal results, the following support (secondary) reagents are recommended: 1) Western Blotting: use goat anti-rabbit IgG-HRP: sc-2004 (dilution range: 1:2000-1:100,000) or Cruz Marker™ compatible goat anti-rabbit IgG-HRP: sc-2030 (dilution range: 1:2000-1:5000), Cruz Marker™ Molecular Weight Standards: sc-2035, TBS Blotto A Blocking Reagent: sc-2333 and Western Blotting Luminol Reagent: sc-2048. 2) Immunoprecipitation: use Protein A/G PLUS-Agarose: sc-2003 (0.5 ml agarose/2.0 ml). 3) Immunofluorescence: use goat anti-rabbit IgG-FITC: sc-2012 (dilution range: 1:100-1:400) or goat anti-rabbit IgG-TR: sc-2780 (dilution range: 1:100-1:400) with UltraCruz™ Mounting Medium: sc-24941.

DATA



SOHLH2 (P-18): sc-84609. Western blot analysis of SOHLH2 expression in Hs 181 Tes whole cell lysate.

STORAGE

Store at 4° C, ****DO NOT FREEZE****. Stable for one year from the date of shipment. Non-hazardous. No MSDS required.

RESEARCH USE

For research use only, not for use in diagnostic procedures.

PROTOCOLS

See our web site at www.scbt.com or our catalog for detailed protocols and support products.