

SPATA13 (N-15): sc-84612

BACKGROUND

SPATA13 (spermatogenesis associated 13), also known as ASEF2, is a 652 amino acid protein that may be involved in the regulation of spermatogenesis. SPATA13 contains a DH (DBL-homology) domain and a PH (pleckstrin-homology) domain, both of which are found in a variety of proteins that are involved in gene expression, membrane trafficking, growth factor signaling or cellular transformation. The gene encoding SPATA13 maps to human chromosome 13q12.12, which houses over 400 genes, such as BRCA2 and RB1, and comprises nearly 4% of the human genome. Trisomy 13, also known as Patau syndrome, is a deadly syndrome associated with chromosome 13. The few who survive past one year suffer from permanent neurologic defects, difficulty eating and vulnerability to serious respiratory infections.

REFERENCES

- Blomberg, N., et al. 1997. Functional diversity of PH domains: an exhaustive modelling study. *Fold. Des.* 2: 343-355.
- Rebecchi, M.J., et al. 1998. Pleckstrin homology domains: a common fold with diverse functions. *Annu. Rev. Biophys. Biomol. Struct.* 27: 503-528.
- Aghazadeh, B., et al. 1998. Structure and mutagenesis of the Dbl homology domain. *Nat. Struct. Biol.* 5: 1098-1107.
- Kawai, T., et al. 1999. Duet is a novel serine/threonine kinase with Dbl-Homology (DH) and Pleckstrin-Homology (PH) domains. *Gene* 227: 249-255.
- Liu, B., et al. 2005. Cloning and expression analysis of gonadogenesis-associated gene SPATA4 from rainbow trout (*Oncorhynchus mykiss*). *J. Biochem. Mol. Biol.* 38: 206-210.
- Deng, Y., et al. 2006. Expression and identification of a novel apoptosis gene SPATA17 (MSRG-11) in mouse spermatogenic cells. *Acta Biochim. Biophys. Sin.* 38: 37-45.
- Xie, M.C., et al. 2007. Cloning and characterization of chicken SPATA4 gene and analysis of its specific expression. *Mol. Cell. Biochem.* 306: 79-85.
- Becker, J.A., et al. 2008. Transcriptome analysis identifies genes with enriched expression in the mouse central extended amygdala. *Neuroscience* 156: 950-965.

CHROMOSOMAL LOCATION

Genetic locus: SPATA13 (human) mapping to 13q12.12; Spata13 (mouse) mapping to 14 D1.

SOURCE

SPATA13 (N-15) is an affinity purified rabbit polyclonal antibody raised against a peptide mapping near the N-terminus of SPATA13 of human origin.

PRODUCT

Each vial contains 100 µg IgG in 1.0 ml of PBS with < 0.1% sodium azide and 0.1% gelatin.

Blocking peptide available for competition studies, sc-84612 P, (100 µg peptide in 0.5 ml PBS containing < 0.1% sodium azide and 0.2% BSA).

APPLICATIONS

SPATA13 (N-15) is recommended for detection of SPATA13 of mouse, rat and human origin by Western Blotting (starting dilution 1:200, dilution range 1:100-1:1000), immunoprecipitation [1-2 µg per 100-500 µg of total protein (1 ml of cell lysate)], immunofluorescence (starting dilution 1:50, dilution range 1:50-1:500) and solid phase ELISA (starting dilution 1:30, dilution range 1:30-1:3000); non cross-reactive with SPATA19 and SPATA20.

Suitable for use as control antibody for SPATA13 siRNA (h): sc-76549, SPATA13 siRNA (m): sc-153712, SPATA13 shRNA Plasmid (h): sc-76549-SH, SPATA13 shRNA Plasmid (m): sc-153712-SH, SPATA13 shRNA (h) Lentiviral Particles: sc-76549-V and SPATA13 shRNA (m) Lentiviral Particles: sc-153712-V.

Molecular Weight (predicted) of SPATA13 isoforms 1/2/3: 75/66/69 kDa.

Molecular Weight (predicted) of SPATA13 isoforms 4/5: 70/62 kDa.

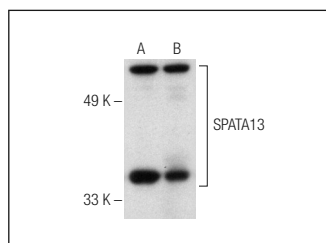
Molecular Weight (observed) of SPATA13: 59 kDa.

Positive Controls: COLO 320DM cell lysate: sc-2226 or Jurkat whole cell lysate: sc-2204.

RECOMMENDED SECONDARY REAGENTS

To ensure optimal results, the following support (secondary) reagents are recommended: 1) Western Blotting: use goat anti-rabbit IgG-HRP: sc-2004 (dilution range: 1:2000-1:100,000) or Cruz Marker™ compatible goat anti-rabbit IgG-HRP: sc-2030 (dilution range: 1:2000-1:5000), Cruz Marker™ Molecular Weight Standards: sc-2035, TBS Blotto A Blocking Reagent: sc-2333 and Western Blotting Luminol Reagent: sc-2048. 2) Immunoprecipitation: use Protein A/G PLUS-Agarose: sc-2003 (0.5 ml agarose/2.0 ml). 3) Immunofluorescence: use goat anti-rabbit IgG-FITC: sc-2012 (dilution range: 1:100-1:400) or goat anti-rabbit IgG-TR: sc-2780 (dilution range: 1:100-1:400) with UltraCruz™ Mounting Medium: sc-24941.

DATA



SPATA13 (N-15): sc-84612. Western blot analysis of SPATA13 expression in COLO 320DM (A) and Jurkat (B) whole cell lysates.

STORAGE

Store at 4° C, **DO NOT FREEZE**. Stable for one year from the date of shipment. Non-hazardous. No MSDS required.

RESEARCH USE

For research use only, not for use in diagnostic procedures.