

SHISA2 (C-19): sc-84640

BACKGROUND

SHISA2 (shisa family member 2), also known as TMEM46 or C13orf13, is a 295 amino acid protein encoded by a gene mapping to human chromosome 13. Comprising nearly 4% of human DNA, chromosome 13 contains around 114 million base pairs and 400 genes. Key tumor suppressor genes on chromosome 13 include the breast cancer susceptibility gene, BRCA2, and the RB1 (retinoblastoma) gene. RB1 encodes a crucial tumor suppressor protein which, when defective, leads to malignant growth in the retina and has been implicated in a variety of other cancers. The gene SLITRK1, which is associated with Tourette syndrome, is on chromosome 13. As with most chromosomes, polysomy of part or all of chromosome 13 is deleterious to development and decreases the odds of survival. Trisomy 13, also known as Patau syndrome, is quite deadly and the few who survive past one year suffer from permanent neurologic defects, difficulty eating and vulnerability to serious respiratory infections.

REFERENCES

- Dunham, A., Matthews, L.H., Burton, J., Ashurst, J.L., Howe, K.L., Ashcroft, K.J., Beare, D.M., Burford, D.C., Hunt, S.E., Griffiths-Jones, S., Jones, M.C., Keenan, S.J. and Oliver, K., et al. 2004. The DNA sequence and analysis of human chromosome 13. *Nature* 428: 522-528.
- Deng, H., Le, W.D., Xie, W.J. and Jankovic, J. 2006. Examination of the SLITRK1 gene in Caucasian patients with Tourette syndrome. *Acta Neurol. Scand.* 114: 400-402.
- Giacinti, C. and Giordano, A. 2006. RB and cell cycle progression. *Oncogene* 25: 5220-5227.
- Grados, M.A. and Walkup, J.T. 2006. A new gene for Tourette's syndrome: a window into causal mechanisms? *Trends Genet.* 22: 291-293.
- Bugge, M., Collins, A., Hertz, J.M., Eiberg, H., Lundsteen, C., Brandt, C.A., Bak, M., Hansen, C., Delozier, C.D., Lespinasse, J., Tranebjaerg, L., Hahnemann, J.M., Rasmussen, K., Bruun-Petersen, G., Duprez, L., Tommerup, N. and Petersen, M.B. 2007. Non-disjunction of chromosome 13. *Hum. Mol. Genet.* 16: 2004-2010.
- Hsu, H.F. and Hou, J.W. 2007. Variable expressivity in Patau syndrome is not all related to trisomy 13 mosaicism. *Am. J. Med. Genet. A* 143A: 1739-1748.
- Hall, H.E., Chan, E.R., Collins, A., Judis, L., Shirley, S., Surti, U., Hoffner, L., Cockwell, A.E., Jacobs, P.A. and Hassold, T.J. 2007. The origin of trisomy 13. *Am. J. Med. Genet. A* 143A: 2242-2248.
- Hassler, M., Singh, S., Yue, W.W., Luczynski, M., Lakbir, R., Sanchez-Sanchez, F., Bader, T., Pearl, L.H. and Mittnacht, S. 2007. Crystal structure of the retinoblastoma protein N domain provides insight into tumor suppression, ligand interaction and holoprotein architecture. *Mol. Cell* 28: 371-385.
- Thorslund, T. and West, S.C. 2007. BRCA2: a universal recombinase regulator. *Oncogene* 26: 7720-7730.

RESEARCH USE

For research use only, not for use in diagnostic procedures.

CHROMOSOMAL LOCATION

Genetic locus: SHISA2 (human) mapping to 13q12.13; Shisa2 (mouse) mapping to 14 D1.

SOURCE

SHISA2 (C-19) is an affinity purified rabbit polyclonal antibody raised against a peptide mapping within a C-terminal cytoplasmic domain of SHISA2 of human origin.

PRODUCT

Each vial contains 100 µg IgG in 1.0 ml of PBS with < 0.1% sodium azide and 0.1% gelatin.

Blocking peptide available for competition studies, sc-84640 P, (100 µg peptide in 0.5 ml PBS containing < 0.1% sodium azide and 0.2% BSA).

APPLICATIONS

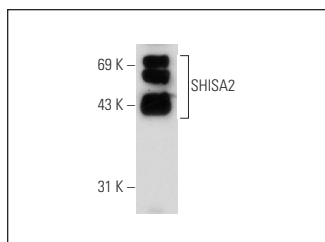
SHISA2 (C-19) is recommended for detection of SHISA2 of mouse, rat and human origin by Western Blotting (starting dilution 1:200, dilution range 1:100-1:1000), immunoprecipitation [1-2 µg per 100-500 µg of total protein (1 ml of cell lysate)], immunofluorescence (starting dilution 1:50, dilution range 1:50-1:500) and solid phase ELISA (starting dilution 1:30, dilution range 1:30-1:3000).

SHISA2 (C-19) is also recommended for detection of SHISA2 in additional species, including equine.

Suitable for use as control antibody for SHISA2 siRNA (h): sc-76691, SHISA2 siRNA (m): sc-154472, SHISA2 shRNA Plasmid (h): sc-76691-SH, SHISA2 shRNA Plasmid (m): sc-154472-SH, SHISA2 shRNA (h) Lentiviral Particles: sc-76691-V and SHISA2 shRNA (m) Lentiviral Particles: sc-154472-V.

Positive Controls: Hs 67 whole cell lysate.

DATA



SHISA2 (C-19): sc-84640. Western blot analysis of SHISA2 expression in Hs 67 whole cell lysate.

STORAGE

Store at 4° C, ****DO NOT FREEZE****. Stable for one year from the date of shipment. Non-hazardous. No MSDS required.