

# ARHGAP28 (K-15): sc-84697

## BACKGROUND

ARHGAP28 (Rho GTPase activating protein 28), also known as KIAA1314, is a 729 amino acid protein that contains one helical Rho-GAP domain. Expressed at moderate levels in ovary and kidney and at lower levels in skeletal muscle and spleen, ARHGAP28 functions as a negative regulator of Rho-type GTPases, specifically catalyzing the conversion of the target GTPase to an inactive, GDP-bound state. ARHGAP28, which exists as four alternatively spliced isoforms, is subject to DNA damaged-induced phosphorylation, possibly by ATM or ATR. The gene encoding ARHGAP28 localizes to human chromosome 18, which houses over 300 protein-coding genes and contains nearly 76 million bases. There are a variety of diseases associated with defects in chromosome 18-localized genes, some of which include trisomy 18 (also known as Edwards syndrome), Niemann-Pick disease, hereditary hemorrhagic telangiectasia, erythropoietic protoporphyria and follicular lymphomas.

## REFERENCES

1. Carstea, E.D., Polymeropoulos, M.H., Parker, C.C., Detera-Wadleigh, S.D., O'Neill, R.R., Patterson, M.C., Goldin, E., Xiao, H., Straub, R.E., Vanier, M.T., et al. 1993. Linkage of Niemann-Pick disease type C to human chromosome 18. *Proc. Natl. Acad. Sci. USA* 90: 2002-2004.
2. Nagase, T., Kikuno, R., Ishikawa, K.I., Hirose, M. and Ohara, O. 2000. Prediction of the coding sequences of unidentified human genes. XVI. The complete sequences of 150 new cDNA clones from brain which code for large proteins *in vitro*. *DNA Res.* 7: 65-73.
3. Online Mendelian Inheritance in Man, OMIM<sup>™</sup>. 2002. Johns Hopkins University, Baltimore, MD. MIM Number: 610592. World Wide Web URL: <http://www.ncbi.nlm.nih.gov/omim/>
4. Petek, E., Pertl, B., Tschernigg, M., Bauer, M., Mayr, J., Wagner, K. and Kroisel, P.M. 2003. Characterisation of a 19-year-old "long-term survivor" with Edwards syndrome. *Genet. Couns.* 14: 239-244.
5. Katoh, M. and Katoh, M. 2004. Identification and characterization of ARHGAP24 and ARHGAP25 genes in silico. *Int. J. Mol. Med.* 14: 333-338.
6. Raghavan, S.C., Swanson, P.C., Wu, X., Hsieh, C.L. and Lieber, M.R. 2004. A non-B-DNA structure at the Bcl-2 major breakpoint region is cleaved by the RAG complex. *Nature* 428: 88-93.
7. Grosso, S., Pucci, L., Di Bartolo, R.M., Gobbi, G., Bartalini, G., Anichini, C., Scarinci, R., Balestri, M., Farnetani, M.A., Cioni, M., Morgese, G. and Balestri, P. 2005. Chromosome 18 aberrations and epilepsy: a review. *Am. J. Med. Genet. A* 134: 88-94.

## CHROMOSOMAL LOCATION

Genetic locus: ARHGAP28 (human) mapping to 18p11.31; Arhgap28 (mouse) mapping to 17 E1.2.

## SOURCE

ARHGAP28 (K-15) is an affinity purified rabbit polyclonal antibody raised against a peptide mapping within an internal region of ARHGAP28 of human origin.

## PRODUCT

Each vial contains 100 µg IgG in 1.0 ml of PBS with < 0.1% sodium azide and 0.1% gelatin.

Blocking peptide available for competition studies, sc-84697 P, (100 µg peptide in 0.5 ml PBS containing < 0.1% sodium azide and 0.2% BSA).

## APPLICATIONS

ARHGAP28 (K-15) is recommended for detection of ARHGAP28 of mouse, rat and human origin by Western Blotting (starting dilution 1:200, dilution range 1:100-1:1000), immunoprecipitation [1-2 µg per 100-500 µg of total protein (1 ml of cell lysate)], immunofluorescence (starting dilution 1:50, dilution range 1:50-1:500) and solid phase ELISA (starting dilution 1:30, dilution range 1:30-1:3000); non cross-reactive with ARHGAP10 and ARHGAP21.

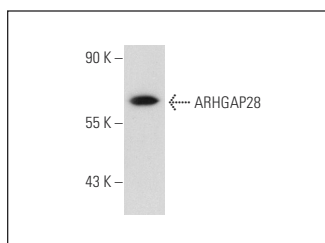
ARHGAP28 (K-15) is also recommended for detection of ARHGAP28 in additional species, including equine, canine, bovine and porcine.

Suitable for use as control antibody for ARHGAP28 siRNA (h): sc-72534, ARHGAP28 siRNA (m): sc-141214, ARHGAP28 shRNA Plasmid (h): sc-72534-SH, ARHGAP28 shRNA Plasmid (m): sc-141214-SH, ARHGAP28 shRNA (h) Lentiviral Particles: sc-72534-V and ARHGAP28 shRNA (m) Lentiviral Particles: sc-141214-V.

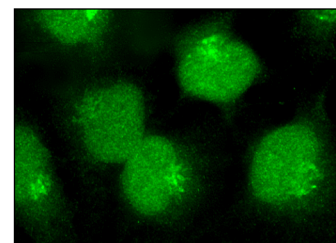
Molecular Weight of ARHGAP28 isoforms: 62-77 kDa.

Positive Controls: NTERA-2 cl.D1 whole cell lysate: sc-364181.

## DATA



ARHGAP28 (K-15): sc-84697. Western blot analysis of ARHGAP28 expression in NTERA-2 cl.D1 whole cell lysate.



ARHGAP28 (K-15): sc-84697. Immunofluorescence staining of methanol-fixed HeLa cells showing nuclear localization.

## STORAGE

Store at 4° C, \*\*DO NOT FREEZE\*\*. Stable for one year from the date of shipment. Non-hazardous. No MSDS required.

## RESEARCH USE

For research use only, not for use in diagnostic procedures.



Try **ARHGAP28 (G-3): sc-365361**, our highly recommended monoclonal alternative to ARHGAP28 (K-15).