

LDLRAD4 (C-16): sc-84715

BACKGROUND

LDLRAD4 is a 306 amino acid single-pass membrane protein that contains one LDL-receptor class A domain and belongs to the PMEPA1 family. LDLRAD4 exists as five alternatively spliced isoforms that display selective expression and are encoded by a gene that maps to human chromosome 18, which houses over 300 protein-coding genes and contains nearly 76 million bases. There are a variety of diseases associated with defects in chromosome 18-localized genes, some of which include Trisomy 18 (also known as Edwards syndrome), Niemann-Pick disease, hereditary hemorrhagic telangiectasia, erythropoietic protoporphyria and follicular lymphomas.

REFERENCES

1. Yoshikawa, T., et al. 1997. Isolation of chromosome 18-specific brain transcripts as positional candidates for bipolar disorder. *Am. J. Med. Genet.* 74: 140-149.
2. Esterling, L.E., et al. 1997. An integrated physical map of 18p11.2: a susceptibility region for bipolar disorder. *Mol. Psychiatry* 2: 501-504.
3. Yoshikawa, T., et al. 1998. Multiple transcriptional variants and RNA editing in C18orf1, a novel gene with LDLRA and transmembrane domains on 18p11.2. *Genomics* 47: 246-257.
4. Online Mendelian Inheritance in Man, OMIM™. 2002. Johns Hopkins University, Baltimore, MD. MIM Number: 606571. World Wide Web URL: <http://www.ncbi.nlm.nih.gov/omim/>
5. Petek, E., et al. 2003. Characterisation of a 19-year-old "long-term survivor" with Edwards syndrome. *Genet. Couns.* 14: 239-244.
6. Grosso, S., et al. 2005. Chromosome 18 aberrations and epilepsy: a review. *Am. J. Med. Genet. A* 134: 88-94.
7. Nusbaum, C., et al. 2005. DNA sequence and analysis of human chromosome 18. *Nature* 437: 551-555.
8. Pickard, B.S., et al. 2005. Candidate psychiatric illness genes identified in patients with pericentric inversions of chromosome 18. *Psychiatr. Genet.* 15: 37-44.

CHROMOSOMAL LOCATION

Genetic locus: LDLRAD4 (human) mapping to 18p11.21; D18Ert653e (mouse) mapping to 18 E2.

SOURCE

LDLRAD4 (C-16) is an affinity purified rabbit polyclonal antibody raised against a peptide mapping within a C-terminal cytoplasmic domain of LDLRAD4 of human origin.

PRODUCT

Each vial contains 100 µg IgG in 1.0 ml of PBS with < 0.1% sodium azide and 0.1% gelatin.

Blocking peptide available for competition studies, sc-84715 P, (100 µg peptide in 0.5 ml PBS containing < 0.1% sodium azide and 0.2% BSA).

APPLICATIONS

LDLRAD4 (C-16) is recommended for detection of LDLRAD4 of mouse, rat and human origin by Western Blotting (starting dilution 1:200, dilution range 1:100-1:1000), immunoprecipitation [1-2 µg per 100-500 µg of total protein (1 ml of cell lysate)], immunofluorescence (starting dilution 1:50, dilution range 1:50-1:500) and solid phase ELISA (starting dilution 1:30, dilution range 1:30-1:3000).

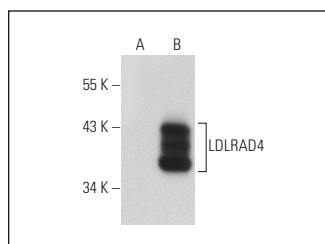
LDLRAD4 (C-16) is also recommended for detection of LDLRAD4 in additional species, including avian.

Suitable for use as control antibody for LDLRAD4 siRNA (h): sc-72671, LDLRAD4 siRNA (m): sc-141838, LDLRAD4 shRNA Plasmid (h): sc-72671-SH, LDLRAD4 shRNA Plasmid (m): sc-141838-SH, LDLRAD4 shRNA (h) Lentiviral Particles: sc-72671-V and LDLRAD4 shRNA (m) Lentiviral Particles: sc-141838-V.

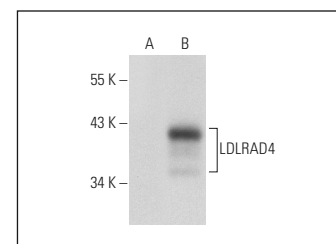
Molecular Weight of LDLRAD4: 34 kDa.

Positive Controls: LDLRAD4 (h): 293T Lysate: sc-112153 or LDLRAD4 (m): 293T Lysate: sc-118903.

DATA



LDLRAD4 (C-16): sc-84715. Western blot analysis of LDLRAD4 expression in non-transfected: sc-117752 (A) and mouse LDLRAD4 transfected: sc-118903 (B) 293T whole cell lysates.



LDLRAD4 (C-16): sc-84715. Western blot analysis of LDLRAD4 expression in non-transfected: sc-117752 (A) and human LDLRAD4 transfected: sc-112153 (B) 293T whole cell lysates.

STORAGE

Store at 4° C, ****DO NOT FREEZE****. Stable for one year from the date of shipment. Non-hazardous. No MSDS required.

RESEARCH USE

For research use only, not for use in diagnostic procedures.

PROTOCOLS

See our web site at www.scbt.com or our catalog for detailed protocols and support products.