

# C18orf19 (N-16): sc-84732

## BACKGROUND

C18orf19 (chromosome 18 open reading frame 19) is a 272 amino acid single pass membrane protein containing one DUF1279 domain and is encoded by a gene located on human chromosome 18. Chromosome 18 houses over 300 protein-coding genes and contains nearly 76 million nucleotide bases. There are a variety of diseases associated with defects in chromosome 18-localized genes, some of which include Trisomy 18 (also known as Edwards syndrome), Niemann-Pick disease, hereditary hemorrhagic telangiectasia, erythropoietic protoporphyria and follicular lymphomas.

## REFERENCES

1. Yoshikawa, T., et al. 1997. Isolation of chromosome 18-specific brain transcripts as positional candidates for bipolar disorder. *Am. J. Med. Genet.* 74: 140-149.
2. Esterling, L.E., et al. 1997. An integrated physical map of 18p11.2: a susceptibility region for bipolar disorder. *Mol. Psychiatry* 2: 501-504.
3. Grosso, S., et al. 2005. Chromosome 18 aberrations and epilepsy: a review. *Am. J. Med. Genet. A* 134A: 88-94.
4. Nusbaum, C., et al. 2005. DNA sequence and analysis of human chromosome 18. *Nature* 437: 551-555.
5. Pickard, B.S., et al. 2005. Candidate psychiatric illness genes identified in patients with pericentric inversions of chromosome 18. *Psychiatr. Genet.* 15: 37-44.

## CHROMOSOMAL LOCATION

Genetic locus: FAM210A (human) mapping to 18p11.21; Fam210a (mouse) mapping to 18 E2.

## SOURCE

C18orf19 (N-16) is an affinity purified rabbit polyclonal antibody raised against a peptide mapping at the N-terminus of C18orf19 of human origin.

## PRODUCT

Each vial contains 100 µg IgG in 1.0 ml of PBS with < 0.1% sodium azide and 0.1% gelatin.

Blocking peptide available for competition studies, sc-84732 P, (100 µg peptide in 0.5 ml PBS containing < 0.1% sodium azide and 0.2% BSA).

## STORAGE

Store at 4° C, **\*\*DO NOT FREEZE\*\***. Stable for one year from the date of shipment. Non-hazardous. No MSDS required.

## PROTOCOLS

See our web site at [www.scbt.com](http://www.scbt.com) or our catalog for detailed protocols and support products.

## APPLICATIONS

C18orf19 (N-16) is recommended for detection of C18orf19 of human origin, 4933403F05Rik of mouse origin and the corresponding rat homolog by Western Blotting (starting dilution 1:200, dilution range 1:100-1:1000), immunoprecipitation [1-2 µg per 100-500 µg of total protein (1 ml of cell lysate)], immunofluorescence (starting dilution 1:50, dilution range 1:50-1:500) and solid phase ELISA (starting dilution 1:30, dilution range 1:30-1:3000).

Suitable for use as control antibody for C18orf19 siRNA (h): sc-72676, 4933403F05Rik siRNA (m): sc-140269, C18orf19 shRNA Plasmid (h): sc-72676-SH, 4933403F05Rik shRNA Plasmid (m): sc-140269-SH, C18orf19 shRNA (h) Lentiviral Particles: sc-72676-V and 4933403F05Rik shRNA (m) Lentiviral Particles: sc-140269-V.

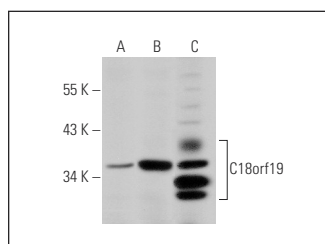
Molecular Weight of C18orf19: 31 kDa.

Positive Controls: mouse heart extract: sc-2254, mouse brain extract: sc-2253 or mouse kidney extract: sc-2255.

## RECOMMENDED SECONDARY REAGENTS

To ensure optimal results, the following support (secondary) reagents are recommended: 1) Western Blotting: use goat anti-rabbit IgG-HRP: sc-2004 (dilution range: 1:2000-1:100,000) or Cruz Marker™ compatible goat anti-rabbit IgG-HRP: sc-2030 (dilution range: 1:2000-1:5000), Cruz Marker™ Molecular Weight Standards: sc-2035, TBS Blotto A Blocking Reagent: sc-2333 and Western Blotting Luminol Reagent: sc-2048. 2) Immunoprecipitation: use Protein A/G PLUS-Agarose: sc-2003 (0.5 ml agarose/2.0 ml). 3) Immunofluorescence: use goat anti-rabbit IgG-FITC: sc-2012 (dilution range: 1:100-1:400) or goat anti-rabbit IgG-TR: sc-2780 (dilution range: 1:100-1:400) with UltraCruz™ Mounting Medium: sc-24941.

## DATA



C18orf19 (N-16): sc-84732. Western blot analysis of C18orf19 expression in mouse kidney (A), mouse heart (B) and mouse brain (C) tissue extracts.

## RESEARCH USE

For research use only, not for use in diagnostic procedures.