

C18orf56 (P-14): sc-84762

BACKGROUND

Encoding over 300 genes, chromosome 18 contains about 76 million bases. Trisomy 18, or Edwards syndrome, is the second most common trisomy after Down's syndrome. Symptoms of Edwards syndrome include low birth weight, a variety of physical development defects, heart deformations and breathing difficulty. Translocation between chromosome 18 and 14 is the most common translocation in cancers, and occurs in follicular lymphomas. Niemann-Pick disease, hereditary hemorrhagic telangiectasia and erythropoietic protoporphyria are associated with chromosome 18. The TGF β modulators, Smad2, Smad4 and Smad7 are encoded by chromosome 18. The C18orf56 gene product has been provisionally designated C18orf56 pending further characterization.

REFERENCES

- Carstea, E.D., Polymeropoulos, M.H., Parker, C.C., Detera-Wadleigh, S.D., O'Neill, R.R., Patterson, M.C., Goldin, E., Xiao, H., Straub, R.E., Vanier, M.T., et al. 1993. Linkage of Niemann-Pick disease type C to human chromosome 18. *Proc. Natl. Acad. Sci. USA* 90: 2002-2004.
- Petek, E., Pertl, B., Tschernigg, M., Bauer, M., Mayr, J., Wagner, K. and Kroisel, P.M. 2003. Characterisation of a 19-year-old "long-term survivor" with Edwards syndrome. *Genet. Couns.* 14: 239-244.
- Raghavan, S.C., Swanson, P.C., Wu, X., Hsieh, C.L. and Lieber, M.R. 2004. A non-B-DNA structure at the Bcl-2 major breakpoint region is cleaved by the RAG complex. *Nature* 428: 88-93.
- Grosso, S., Pucci, L., Di Bartolo, R.M., Gobbi, G., Bartalini, G., Anichini, C., Scarinci, R., Balestri, M., Farnetani, M.A., Cioni, M., Morgese, G. and Balestri, P. 2005. Chromosome 18 aberrations and epilepsy: a review. *Am. J. Med. Genet. A* 134: 88-94.
- Aurizi, C., Schneider-Yin, X., Sorge, F., Macri, A., Minder, E.I. and Biolcati, G. 2007. Heterogeneity of mutations in the ferrochelatase gene in Italian patients with erythropoietic protoporphyria. *Mol. Genet. Metab.* 90: 402-407.

CHROMOSOMAL LOCATION

Genetic locus: C18orf56 (human) mapping to 18p11.32.

SOURCE

C18orf56 (P-14) is an affinity purified rabbit polyclonal antibody raised against a peptide mapping near the N-terminus of C18orf56 of human origin.

PRODUCT

Each vial contains 100 μ g IgG in 1.0 ml of PBS with < 0.1% sodium azide and 0.1% gelatin.

Blocking peptide available for competition studies, sc-84762 P, (100 μ g peptide in 0.5 ml PBS containing < 0.1% sodium azide and 0.2% BSA).

STORAGE

Store at 4 $^{\circ}$ C, ****DO NOT FREEZE****. Stable for one year from the date of shipment. Non-hazardous. No MSDS required.

APPLICATIONS

C18orf56 (P-14) is recommended for detection of C18orf56 of human origin by Western Blotting (starting dilution 1:200, dilution range 1:100-1:1000), immunofluorescence (starting dilution 1:50, dilution range 1:50-1:500) and solid phase ELISA (starting dilution 1:30, dilution range 1:30-1:3000).

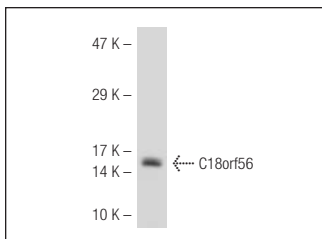
Suitable for use as control antibody for C18orf56 siRNA (h): sc-72688, C18orf56 shRNA Plasmid (h): sc-72688-SH and C18orf56 shRNA (h) Lenti-viral Particles: sc-72688-V.

Positive Controls: Caki-1 cell lysate: sc-2224.

RECOMMENDED SECONDARY REAGENTS

To ensure optimal results, the following support (secondary) reagents are recommended: 1) Western Blotting: use goat anti-rabbit IgG-HRP: sc-2004 (dilution range: 1:2000-1:100,000) or Cruz MarkerTM compatible goat anti-rabbit IgG-HRP: sc-2030 (dilution range: 1:2000-1:5000), Cruz MarkerTM Molecular Weight Standards: sc-2035, TBS Blotto A Blocking Reagent: sc-2333 and Western Blotting Luminol Reagent: sc-2048. 2) Immunofluorescence: use goat anti-rabbit IgG-FITC: sc-2012 (dilution range: 1:100-1:400) or goat anti-rabbit IgG-TR: sc-2780 (dilution range: 1:100-1:400) with UltraCruzTM Mounting Medium: sc-24941.

DATA



C18orf56 (P-14): sc-84762. Western blot analysis of C18orf56 expression in Caki-1 whole cell lysate.

RESEARCH USE

For research use only, not for use in diagnostic procedures.

PROTOCOLS

See our web site at www.scbt.com or our catalog for detailed protocols and support products.