

# CCDC11 (Q-14): sc-84780

## BACKGROUND

CCDC11 (coiled-coil domain containing 11) is a 514 amino acid protein encoded by a gene that maps to human chromosome 18q21.1. Encoding over 300 genes, chromosome 18 contains about 76 million bases. Trisomy 18, or Edwards syndrome, is the second most common trisomy after Down syndrome. Symptoms of Edwards syndrome include low birth weight, a variety of physical development defects, heart deformations and breathing difficulty. Translocation between chromosome 18 and 14 is the most common translocation in cancers, and occurs in follicular lymphomas. Niemann-Pick disease, hereditary hemorrhagic telangiectasia and erythropoietic protoporphyria are associated with chromosome 18. The TGF $\beta$  modulators, Smad2, Smad4 and Smad7 are encoded by chromosome 18.

## REFERENCES

1. Carstea, E.D., Polymeropoulos, M.H., Parker, C.C., Detera-Wadleigh, S.D., O'Neill, R.R., Patterson, M.C., Goldin, E., Xiao, H., Straub, R.E., Vanier, M.T., et al. 1993. Linkage of Niemann-Pick disease type C to human chromosome 18. *Proc. Natl. Acad. Sci. USA* 90: 2002-2004.
2. Petek, E., Pertl, B., Tschernigg, M., Bauer, M., Mayr, J., Wagner, K. and Kroisel, P.M. 2003. Characterisation of a 19-year-old "long-term survivor" with Edwards syndrome. *Genet. Couns.* 14: 239-244.
3. Raghavan, S.C., Swanson, P.C., Wu, X., Hsieh, C.L. and Lieber, M.R. 2004. A non-B-DNA structure at the Bcl-2 major breakpoint region is cleaved by the RAG complex. *Nature* 428: 88-93.
4. Grosso, S., Pucci, L., Di Bartolo, R.M., Gobbi, G., Bartalini, G., Anichini, C., Scarinci, R., Balestri, M., Farnetani, M.A., Cioni, M., Morgese, G. and Balestri, P. 2005. Chromosome 18 aberrations and epilepsy: a review. *Am. J. Med. Genet. A* 134: 88-94.
5. Aurizi, C., Schneider-Yin, X., Sorge, F., Macri, A., Minder, E.I. and Biolcati, G. 2007. Heterogeneity of mutations in the ferrochelatase gene in Italian patients with erythropoietic protoporphyria. *Mol. Genet. Metab.* 90: 402-407.

## CHROMOSOMAL LOCATION

Genetic locus: CCDC11 (human) mapping to 18q21.1; Ccdc11 (mouse) mapping to 18 E2.

## SOURCE

CCDC11 (Q-14) is an affinity purified rabbit polyclonal antibody raised against a peptide mapping within an internal region of CCDC11 of human origin.

## PRODUCT

Each vial contains 100  $\mu$ g IgG in 1.0 ml of PBS with < 0.1% sodium azide and 0.1% gelatin.

Blocking peptide available for competition studies, sc-84780 P, (100  $\mu$ g peptide in 0.5 ml PBS containing < 0.1% sodium azide and 0.2% BSA).

## RESEARCH USE

For research use only, not for use in diagnostic procedures.

## APPLICATIONS

CCDC11 (Q-14) is recommended for detection of CCDC11 of mouse, rat and human origin by Western Blotting (starting dilution 1:200, dilution range 1:100-1:1000), immunoprecipitation [1-2  $\mu$ g per 100-500  $\mu$ g of total protein (1 ml of cell lysate)], immunofluorescence (starting dilution 1:50, dilution range 1:50-1:500) and solid phase ELISA (starting dilution 1:30, dilution range 1:30-1:3000); non cross-reactive with other CCDC family members.

Suitable for use as control antibody for CCDC11 siRNA (h): sc-72820, CCDC11 siRNA (m): sc-142054, CCDC11 shRNA Plasmid (h): sc-72820-SH, CCDC11 shRNA Plasmid (m): sc-142054-SH, CCDC11 shRNA (h) Lentiviral Particles: sc-72820-V and CCDC11 shRNA (m) Lentiviral Particles: sc-142054-V.

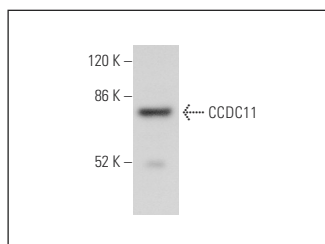
Molecular Weight of CCDC11: 62 kDa.

Positive Controls: F9 cell lysate: sc-2245.

## RECOMMENDED SECONDARY REAGENTS

To ensure optimal results, the following support (secondary) reagents are recommended: 1) Western Blotting: use goat anti-rabbit IgG-HRP: sc-2004 (dilution range: 1:2000-1:100,000) or Cruz Marker™ compatible goat anti-rabbit IgG-HRP: sc-2030 (dilution range: 1:2000-1:5000), Cruz Marker™ Molecular Weight Standards: sc-2035, TBS Blotto A Blocking Reagent: sc-2333 and Western Blotting Luminol Reagent: sc-2048. 2) Immunoprecipitation: use Protein A/G PLUS-Agarose: sc-2003 (0.5 ml agarose/2.0 ml). 3) Immunofluorescence: use goat anti-rabbit IgG-FITC: sc-2012 (dilution range: 1:100-1:400) or goat anti-rabbit IgG-TR: sc-2780 (dilution range: 1:100-1:400) with UltraCruz™ Mounting Medium: sc-24941.

## DATA



CCDC11 (Q-14): sc-84780. Western blot analysis of CCDC11 expression in F9 whole cell lysate.

## STORAGE

Store at 4° C, \*\*DO NOT FREEZE\*\*. Stable for one year from the date of shipment. Non-hazardous. No MSDS required.

## PROTOCOLS

See our web site at [www.scbt.com](http://www.scbt.com) or our catalog for detailed protocols and support products.