

CEP192 (N-17): sc-84785



The Power to Question

BACKGROUND

Centrosomes are the major microtubule-organizing centers of mammalian cells. They are composed of a centriole pair and surrounding microtubule-nucleating material termed pericentriolar material (PCM). Bipolar mitotic spindle assembly relies on two intertwined processes: centriole duplication and centrosome maturation. Failure to properly orchestrate centrosome duplication and maturation is subsequently linked to spindle defects, which can result in aneuploidy and promote cancer progression. The human homolog of the *C. elegans* and *D. melanogaster* protein SPD-2 is CEP192 (centrosomal protein of 192 kDa), an integral regulator of PCM recruitment, centrosome maturation centriole duplication. CEP192 forms a scaffold upon which proteins involved in microtubule nucleation and spindle assembly become active during mitosis.

REFERENCES

1. Lange, B.M., Faragher, A.J., March, P. and Gull, K. 2000. Centriole duplication and maturation in animal cells. *Curr. Top. Dev. Biol.* 49: 235-249.
2. Kemp, C.A., Kopish, K.R., Zipperlen, P., Ahringer, J. and O'Connell, K.F. 2004. Centrosome maturation and duplication in *C. elegans* require the coiled-coil protein SPD-2. *Dev. Cell* 6: 511-523.
3. Pelletier, L., O'Toole, E., Schwager, A., Hyman, A.A. and Müller-Reichert, T. 2006. Centriole assembly in *Caenorhabditis elegans*. *Nature* 444: 619-623.
4. Gomez-Ferreria, M.A., Rath, U., Buster, D.W., Chanda, S.K., Caldwell, J.S., Rines, D.R. and Sharp, D.J. 2007. Human CEP192 is required for mitotic centrosome and spindle assembly. *Curr. Biol.* 17: 1960-1966.
5. Gomez-Ferreria, M.A. and Sharp, D.J. 2008. CEP192 and the generation of the mitotic spindle. *Cell Cycle* 7: 1507-1510.
6. Zhu, F., Lawo, S., Bird, A., Pinchev, D., Ralph, A., Richter, C., Müller-Reichert, T., Kittler, R., Hyman, A.A. and Pelletier, L. 2008. The mammalian SPD-2 ortholog CEP192 regulates centrosome biogenesis. *Curr. Biol.* 18: 136-141.
7. Giansanti, M.G., Bucciarelli, E., Bonaccorsi, S. and Gatti, M. 2008. Drosophila SPD-2 is an essential centriole component required for PCM recruitment and astral-microtubule nucleation. *Curr. Biol.* 18: 303-309.

CHROMOSOMAL LOCATION

Genetic locus: CEP192 (human) mapping to 18p11.21.

SOURCE

CEP192 (N-17) is an affinity purified rabbit polyclonal antibody raised against a peptide mapping at the N-terminus of CEP192 of human origin.

PRODUCT

Each vial contains 100 µg IgG in 1.0 ml of PBS with < 0.1% sodium azide and 0.1% gelatin.

Blocking peptide available for competition studies, sc-84785 P, (100 µg peptide in 0.5 ml PBS containing < 0.1% sodium azide and 0.2% BSA).

APPLICATIONS

CEP192 (N-17) is recommended for detection of CEP192 of human origin by Western Blotting (starting dilution 1:200, dilution range 1:100-1:1000), immunoprecipitation [1-2 µg per 100-500 µg of total protein (1 ml of cell lysate)], immunofluorescence (starting dilution 1:50, dilution range 1:50-1:500) and solid phase ELISA (starting dilution 1:30, dilution range 1:30-1:3000).

Suitable for use as control antibody for CEP192 siRNA (h): sc-72864, CEP192 shRNA Plasmid (h): sc-72864-SH and CEP192 shRNA (h) Lentiviral Particles: sc-72864-V.

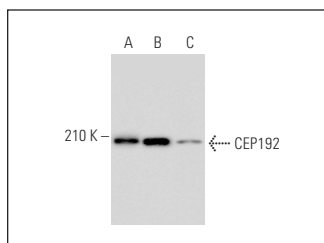
Molecular Weight of CEP192: 192 kDa.

Positive Controls: HeLa whole cell lysate: sc-2200 or SW480 cell lysate: sc-2219.

RECOMMENDED SECONDARY REAGENTS

To ensure optimal results, the following support (secondary) reagents are recommended: 1) Western Blotting: use goat anti-rabbit IgG-HRP: sc-2004 (dilution range: 1:2000-1:100,000) or Cruz Marker™ compatible goat anti-rabbit IgG-HRP: sc-2030 (dilution range: 1:2000-1:5000), Cruz Marker™ Molecular Weight Standards: sc-2035, TBS Blotto A Blocking Reagent: sc-2333 and Western Blotting Luminol Reagent: sc-2048. 2) Immunoprecipitation: use Protein A/G PLUS-Agarose: sc-2003 (0.5 ml agarose/2.0 ml). 3) Immunofluorescence: use goat anti-rabbit IgG-FITC: sc-2012 (dilution range: 1:100-1:400) or goat anti-rabbit IgG-TR: sc-2780 (dilution range: 1:100-1:400) with UltraCruz™ Mounting Medium: sc-24941.

DATA



CEP192 (N-17): sc-84785. Western blot analysis of CEP192 expression in HeLa (A), SW480 (B) and U-251-MG (C) whole cell lysates.

STORAGE

Store at 4° C, **DO NOT FREEZE**. Stable for one year from the date of shipment. Non-hazardous. No MSDS required.

RESEARCH USE

For research use only, not for use in diagnostic procedures.

PROTOCOLS

See our web site at www.scbt.com or our catalog for detailed protocols and support products.