

LOC653735 (P-15): sc-84954

BACKGROUND

Encoding over 300 genes, chromosome 18 contains about 76 million bases. Trisomy 18, or Edwards syndrome, is the second most common trisomy after Down's syndrome. Symptoms of Edwards syndrome include low birth weight, a variety of physical development defects, heart deformations and breathing difficulty. Translocation between chromosome 18 and 14 is the most common translocation in cancers, and occurs in follicular lymphomas. Niemann-Pick disease, hereditary hemorrhagic telangiectasia and erythropoietic protoporphyria are associated with chromosome 18. The TGF β modulators, Smad2, Smad4 and Smad7 are encoded by chromosome 18. The LOC653735 gene product has been provisionally designated LOC653735 pending further characterization.

REFERENCES

1. Carstea, E.D., Polymeropoulos, M.H., Parker, C.C., Detera-Wadleigh, S.D., O'Neill, R.R., Patterson, M.C., Goldin, E., Xiao, H., Straub, R.E., Vanier, M.T., et al. 1993. Linkage of Niemann-Pick disease type C to human chromosome 18. *Proc. Natl. Acad. Sci. USA* 90: 2002-2004.
2. Petek, E., Pertl, B., Tschernigg, M., Bauer, M., Mayr, J., Wagner, K. and Kroisel, P.M. 2003. Characterisation of a 19-year-old "long-term survivor" with Edwards syndrome. *Genet. Couns.* 14: 239-244.
3. Raghavan, S.C., Swanson, P.C., Wu, X., Hsieh, C.L. and Lieber, M.R. 2004. A non-B-DNA structure at the Bcl-2 major breakpoint region is cleaved by the RAG complex. *Nature* 428: 88-93.
4. Grosso, S., Pucci, L., Di Bartolo, R.M., Gobbi, G., Bartalini, G., Anichini, C., Scarinci, R., Balestri, M., Farnetani, M.A., Cioni, M., Morgese, G. and Balestri, P. 2005. Chromosome 18 aberrations and epilepsy: a review. *Am. J. Med. Genet. A* 134: 88-94.
5. Aurizi, C., Schneider-Yin, X., Sorge, F., Macri, A., Minder, E.I. and Biolcati, G. 2007. Heterogeneity of mutations in the ferrochelatase gene in Italian patients with erythropoietic protoporphyria. *Mol. Genet. Metab.* 90: 402-407.
6. Broderick, P., Carvajal-Carmona, L., Pittman, A.M., Webb, E., Howarth, K., Rowan, A., Lubbe, S., Spain, S., Sullivan, K., Fielding, S., Jaeger, E., Vijaykrishnan, J., Kemp, Z., Gorman, M., Chandler, I., Papaemmanuil, E., et al. 2007. A genome-wide association study shows that common alleles of Smad7 influence colorectal cancer risk. *Nat. Genet.* 39: 1315-1317.
7. Kamal, A.H. and Prakash, U.B. 2007. Hereditary hemorrhagic telangiectasia. *Mayo Clin. Proc.* 82: 1364.
8. Shovlin, C.L., Sulaiman, N.L., Govani, F.S., Jackson, J.E. and Begbie, M.E. 2007. Elevated Factor VIII in hereditary haemorrhagic telangiectasia (HHT): Association with venous thromboembolism. *Thromb. Haemost.* 98: 1031-1039.

SOURCE

LOC653735 (P-15) is an affinity purified rabbit polyclonal antibody raised against a peptide mapping within an internal region of LOC653735 of human origin.

PRODUCT

Each vial contains 100 μ g IgG in 1.0 ml of PBS with < 0.1% sodium azide and 0.1% gelatin.

Blocking peptide available for competition studies, sc-84954 P, (100 μ g peptide in 0.5 ml PBS containing < 0.1% sodium azide and 0.2% BSA).

APPLICATIONS

LOC653735 (P-15) is recommended for detection of LOC653735, LOC441956 and LOC81787 of human origin by Western Blotting (starting dilution 1:200, dilution range 1:100-1:1000), immunoprecipitation [1-2 μ g per 100-500 μ g of total protein (1 ml of cell lysate)], immunofluorescence (starting dilution 1:50, dilution range 1:50-1:500) and solid phase ELISA (starting dilution 1:30, dilution range 1:30-1:3000).

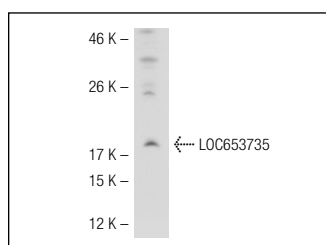
Molecular Weight of LOC653735: 15 kDa.

Positive Controls: SK-N-MC cell lysate: sc-2237.

RECOMMENDED SECONDARY REAGENTS

To ensure optimal results, the following support (secondary) reagents are recommended: 1) Western blotting: use goat anti-rabbit IgG-HRP: sc-2004 (dilution range: 1:2000-1:100,000) or Cruz Marker[™] compatible goat anti-rabbit IgG-HRP: sc-2030 (dilution range: 1:2000-1:5000), Cruz Marker[™] Molecular Weight Standards: sc-2035, TBS Blotto A Blocking Reagent: sc-2333 and Western Blotting Luminol Reagent: sc-2048. 2) Immunoprecipitation: use Protein A/G PLUS-Agarose: sc-2003 (0.5 ml agarose/2.0 ml). 3) Immunofluorescence: use goat anti-rabbit IgG-FITC: sc-2012 (dilution range: 1:100-1:400) or goat anti-rabbit IgG-TR: sc-2780 (dilution range: 1:100-1:400) with UltraCruz[™] Mounting Medium: sc-24941.

DATA



LOC653735 (P-15): sc-84954. Western blot analysis of LOC653735 expression in SK-N-MC whole cell lysate.

STORAGE

Store at 4° C, ****DO NOT FREEZE****. Stable for one year from the date of shipment. Non-hazardous. No MSDS required.

RESEARCH USE

For research use only, not for use in diagnostic procedures.

PROTOCOLS

See our web site at www.scbt.com or our catalog for detailed protocols and support products.