

PARD6G (K-18): sc-85096

BACKGROUND

PARD6G (partitioning defective 6 homolog γ) is a 376 amino acid adaptor protein that is involved in cell polarization and asymmetrical cell division processes. PARD6G contains one OPR domain, one PDZ (DHR) domain and one pseudo-CRIB domain. The PDZ and pseudo-CRIB domains are required for interaction with Rho small GTPases. Through its complex formation with PARD3G, PARD6G participates in the linking of GTP-bound Rho small GTPases to atypical protein kinase C (PKC) proteins. This assembly is involved in formation of normal tight junctions at epithelial cell-cell contacts. When atypical PKC and PARD6G are expressed with a constitutively active Rac, the proteins co-localize to the membrane ruffles, which are structures that occur at the leading edge of polarized cells during movement. Though widely expressed, PARD6G is found at highest levels in adult and fetal kidney.

REFERENCES

- Johansson, A., Driessens, M. and Aspenström, P. 2000. The mammalian homologue of the *Caenorhabditis elegans* polarity protein PAR-6 is a binding partner for the Rho GTPases Cdc42 and Rac 1. *J. Cell Sci.* 113 (Pt 18): 3267-3275.
- Joberty, G., Petersen, C., Gao, L. and Macara, I.G. 2000. The cell-polarity protein PAR-6 links PAR-3 and atypical protein kinase C to Cdc42. *Nat. Cell Biol.* 2: 531-539.
- Ohno, S. 2001. Intercellular junctions and cellular polarity: the PAR-aPKC complex, a conserved core cassette playing fundamental roles in cell polarity. *Curr. Opin. Cell Biol.* 13: 641-648.
- Noda, Y., Takeya, R., Ohno, S., Naito, S., Ito, T. and Sumimoto, H. 2001. Human homologues of the *Caenorhabditis elegans* cell polarity protein PAR-6 as an adaptor that links the small GTPases Rac and Cdc42 to atypical protein kinase C. *Genes Cells* 6: 107-119.
- Suzuki, A., Yamanaka, T., Hirose, T., Manabe, N., Mizuno, K., Shimizu, M., Akimoto, K., Izumi, Y., Ohnishi, T. and Ohno, S. 2001. Atypical protein kinase C is involved in the evolutionarily conserved PAR protein complex and plays a critical role in establishing epithelia-specific junctional structures. *J. Cell Biol.* 152: 1183-1196.
- Macara, I.G. 2004. PAR proteins: partners in polarization. *Curr. Biol.* 14: R160-R162.
- Online Mendelian Inheritance in Man, OMIM[™]. 2004. Johns Hopkins University, Baltimore, MD. MIM Number: 608976. World Wide Web URL: <http://www.ncbi.nlm.nih.gov/omim/>
- Suzuki, A. and Ohno, S. 2006. The PAR-aPKC system: lessons in polarity. *J. Cell Sci.* 119 (Pt 6): 979-987.

CHROMOSOMAL LOCATION

Genetic locus: PARD6G (human) mapping to 18q23.

SOURCE

PARD6G (K-18) is an affinity purified rabbit polyclonal antibody raised against a peptide mapping within an internal region of PARD6G of human origin.

PRODUCT

Each vial contains 100 μ g IgG in 1.0 ml of PBS with < 0.1% sodium azide and 0.1% gelatin.

Blocking peptide available for competition studies, sc-85096 P, (100 μ g peptide in 0.5 ml PBS containing < 0.1% sodium azide and 0.2% BSA).

APPLICATIONS

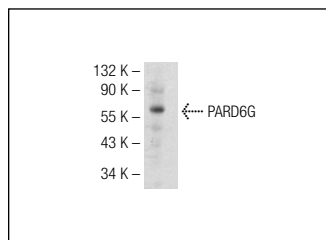
PARD6G (K-18) is recommended for detection of PARD6G of human origin by Western Blotting (starting dilution 1:200, dilution range 1:100-1:1000), immunoprecipitation [1-2 μ g per 100-500 μ g of total protein (1 ml of cell lysate)], immunofluorescence (starting dilution 1:50, dilution range 1:50-1:500) and solid phase ELISA (starting dilution 1:30, dilution range 1:30-1:3000); non cross-reactive with other PARD family members.

Suitable for use as control antibody for PARD6G siRNA (h): sc-76050, PARD6G shRNA Plasmid (h): sc-76050-SH and PARD6G shRNA (h) Lentiviral Particles: sc-76050-V.

Molecular Weight of PARD6G: 41 kDa.

Positive Controls: mouse thymus extract: sc-2406.

DATA



PARD6G (K-18): sc-85096. Western blot analysis of PARD6G expression in mouse thymus tissue extract.

STORAGE

Store at 4° C, **DO NOT FREEZE**. Stable for one year from the date of shipment. Non-hazardous. No MSDS required.

RESEARCH USE

For research use only, not for use in diagnostic procedures.

PROTOCOLS

See our web site at www.scbt.com or our catalog for detailed protocols and support products.