

se57-1 (L-15): sc-85135



The Power to Question

BACKGROUND

se57-1 (coiled-coil domain-containing protein 68), also known as CTCL tumor antigen se57-1, is a 335 amino acid protein expressed in cutaneous T-cell lymphoma (CTCL), bone marrow, colon, small intestine, spleen, testis and trachea tissues. CTCL is a cancer of the immune system associated with mutation of the T cells. Malignant T cells form lesions on the surface of the skin. se57-1 contains one coiled coil domain and is encoded by the CCDC68 gene mapping to human chromosome 18. Chromosome 18 houses over 300 protein-coding genes and contains nearly 76 million bases. There are a variety of diseases associated with defects in chromosome 18-localized genes, some of which include Trisomy 18 (also known as Edwards syndrome), Niemann-Pick disease, hereditary hemorrhagic telangiectasia, erythropoietic protoporphyria and follicular lymphomas.

REFERENCES

1. Eichmüller, S., Usener, D., Dummer, R., Stein, A., Thiel, D. and Schadendorf, D. 2001. Serological detection of cutaneous T-cell lymphoma-associated antigens. *Proc. Natl. Acad. Sci. USA* 98: 629-634.
2. Gerhardt, A., Usener, D., Keese, M., Sturm, J., Schadendorf, D. and Eichmüller, S. 2004. Tissue expression and sero-reactivity of tumor-specific antigens in colorectal cancer. *Cancer Lett.* 208: 197-206.
3. Nicot, C. 2005. Current views in HTLV-I-associated adult T-cell leukemia/lymphoma. *Am. J. Hematol.* 78: 232-239.
4. Grosso, S., Pucci, L., Di Bartolo, R.M., Gobbi, G., Bartalini, G., Anichini, C., Scarinci, R., Balestri, M., Farnetani, M.A., Cioni, M., Morgese, G. and Balestri, P. 2005. Chromosome 18 aberrations and epilepsy: a review. *Am. J. Med. Genet. A* 134A: 88-94.
5. Nusbaum, C., Zody, M.C., Borowsky, M.L., Kamal, M., Kodira, C.D., Taylor, T.D., Whittaker, C.A., Chang, J.L., Cuomo, C.A., Dewar, K., FitzGerald, M.G., Yang, X., Abouelleil, A., Allen, N.R., Anderson, S., et al. 2005. DNA sequence and analysis of human chromosome 18. *Nature* 437: 551-555.

CHROMOSOMAL LOCATION

Genetic locus: CCDC68 (human) mapping to 18q21.2.

SOURCE

se57-1 (L-15) is an affinity purified goat polyclonal antibody raised against a peptide mapping within an internal region of se57-1 of human origin.

PRODUCT

Each vial contains 200 µg IgG in 1.0 ml of PBS with < 0.1% sodium azide and 0.1% gelatin.

Blocking peptide available for competition studies, sc-85135 P, (100 µg peptide in 0.5 ml PBS containing < 0.1% sodium azide and 0.2% BSA).

STORAGE

Store at 4° C, **DO NOT FREEZE**. Stable for one year from the date of shipment. Non-hazardous. No MSDS required.

APPLICATIONS

se57-1 (L-15) is recommended for detection of se57-1 of human origin by Western Blotting (starting dilution 1:200, dilution range 1:100-1:1000), immunoprecipitation [1-2 µg per 100-500 µg of total protein (1 ml of cell lysate)], immunofluorescence (starting dilution 1:50, dilution range 1:50-1:500), immunohistochemistry (including paraffin-embedded sections) (starting dilution 1:50, dilution range 1:50-1:500) and solid phase ELISA (starting dilution 1:30, dilution range 1:30-1:3000).

Suitable for use as control antibody for se57-1 siRNA (h): sc-76463, se57-1 shRNA Plasmid (h): sc-76463-SH and se57-1 shRNA (h) Lentiviral Particles: sc-76463-V.

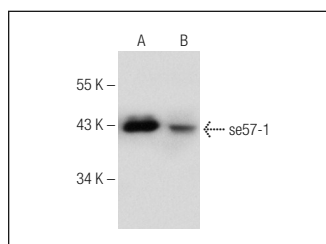
Molecular Weight of se57-1: 39 kDa.

Positive Controls: Hep G2 cell lysate: sc-2227 or WiDr cell lysate: sc-24779.

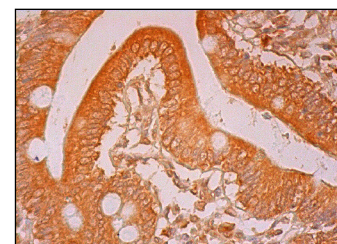
RECOMMENDED SECONDARY REAGENTS

To ensure optimal results, the following support (secondary) reagents are recommended: 1) Western Blotting: use donkey anti-goat IgG-HRP: sc-2020 (dilution range: 1:2000-1:100,000) or Cruz Marker™ compatible donkey anti-goat IgG-HRP: sc-2033 (dilution range: 1:2000-1:5000), Cruz Marker™ Molecular Weight Standards: sc-2035, TBS Blotto A Blocking Reagent: sc-2333 and Western Blotting Luminol Reagent: sc-2048. 2) Immunoprecipitation: use Protein A/G PLUS-Agarose: sc-2003 (0.5 ml agarose/2.0 ml). 3) Immunofluorescence: use donkey anti-goat IgG-FITC: sc-2024 (dilution range: 1:100-1:400) or donkey anti-goat IgG-TR: sc-2783 (dilution range: 1:100-1:400) with UltraCruz™ Mounting Medium: sc-24941. 4) Immunohistochemistry: use ImmunoCruz™: sc-2053 or ABC: sc-2023 goat IgG Staining Systems.

DATA



se57-1 (L-15): sc-85135. Western blot analysis of se57-1 expression in WiDr (A) and Hep G2 (B) whole cell lysates.



se57-1 (L-15): sc-85135. Immunoperoxidase staining of formalin fixed, paraffin-embedded human small intestine tissue showing cytoplasmic staining of glandular cells.

RESEARCH USE

For research use only, not for use in diagnostic procedures.

PROTOCOLS

See our web site at www.scbt.com or our catalog for detailed protocols and support products.