

SerpinB11 (G-20): sc-85140

BACKGROUND

The serine proteinase inhibitors (serpins) compose a superfamily of proteins with a diverse set of functions, including the control of blood coagulation, complement activation, programmed cell death and development. Serpins are secreted glycoproteins that contain a stretch of peptide that mimics a true substrate for a corresponding serine protease. SerpinB11 (serpin peptidase inhibitor, clade B (ovalbumin), member 11), also known as EPIPIN or SERPIN11, is a 392 amino acid cytoplasmic protein that belongs to the Ov-serpin subfamily and serpin family. Like other members of the serpin family, SerpinB11 has been identified as a noninhibitory intracellular protein. The gene encoding SerpinB11 maps to human chromosome 18, which houses over 300 protein-coding genes and contains nearly 76 million bases. There are a variety of diseases associated with defects in chromosome 18-localized genes, some of which include Trisomy 18 (also known as Edwards syndrome), Niemann-Pick disease, hereditary hemorrhagic telangiectasia, erythropoietic protoporphyria and follicular lymphomas.

REFERENCES

1. Carstea, E.D., et al. 1993. Linkage of Niemann-Pick disease type C to human chromosome 18. *Proc. Natl. Acad. Sci. USA* 90: 2002-2004.
2. Yoshikawa, T., et al. 1997. Isolation of chromosome 18-specific brain transcripts as positional candidates for bipolar disorder. *Am. J. Med. Genet.* 74: 140-149.
3. Petek, E., et al. 2003. Characterisation of a 19-year-old "long-term survivor" with Edwards syndrome. *Genet. Couns.* 14: 239-244.
4. Raghavan, S.C., et al. 2004. A non-B-DNA structure at the Bcl-2 major breakpoint region is cleaved by the RAG complex. *Nature* 428: 88-93.
5. Grosso, S., et al. 2005. Chromosome 18 aberrations and epilepsy: a review. *Am. J. Med. Genet. A.* 134A: 88-94.
6. Askev, D.J., et al. 2007. SerpinB11 is a new noninhibitory intracellular serpin. Common single nucleotide polymorphisms in the scaffold impair conformational change. *J. Biol. Chem.* 282: 24948-24960.
7. Aurizi, C., et al. 2007. Heterogeneity of mutations in the ferrochelatase gene in Italian patients with erythropoietic protoporphyria. *Mol. Genet. Metab.* 90: 402-407.
8. Herrero Hernández, E. and Discalzi, G. 2009. Hypermanganesemia, hereditary hemorrhagic telangiectasia, brain abscess: the hepatic connection. *Neurology* 73: 405.

CHROMOSOMAL LOCATION

Genetic locus: SERPINB11 (human) mapping to 18q21.33.

SOURCE

SerpinB11 (G-20) is an affinity purified goat polyclonal antibody raised against a peptide mapping within an internal region of SerpinB11 of human origin.

RESEARCH USE

For research use only, not for use in diagnostic procedures.

PRODUCT

Each vial contains 200 µg IgG in 1.0 ml of PBS with < 0.1% sodium azide and 0.1% gelatin.

Blocking peptide available for competition studies, sc-85140 P, (100 µg peptide in 0.5 ml PBS containing < 0.1% sodium azide and 0.2% BSA).

APPLICATIONS

SerpinB11 (G-20) is recommended for detection of SerpinB11 of human origin by Western Blotting (starting dilution 1:200, dilution range 1:100-1:1000), immunoprecipitation [1-2 µg per 100-500 µg of total protein (1 ml of cell lysate)], immunofluorescence (starting dilution 1:50, dilution range 1:50-1:500) and solid phase ELISA (starting dilution 1:30, dilution range 1:30-1:3000); non cross-reactive with other Serpin family members.

SerpinB11 (G-20) is also recommended for detection of SerpinB11 in additional species, including equine, canine and porcine.

Suitable for use as control antibody for SerpinB11 siRNA (h): sc-76476, SerpinB11 shRNA Plasmid (h): sc-76476-SH and SerpinB11 shRNA (h) Lentiviral Particles: sc-76476-V.

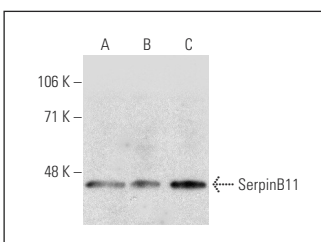
Molecular Weight of SerpinB11: 44 kDa.

Positive Controls: HeLa whole cell lysate: sc-2200, U-698-M whole cell lysate: sc-364799 or MES-SA/Dx5 cell lysate: sc-2284.

RECOMMENDED SECONDARY REAGENTS

To ensure optimal results, the following support (secondary) reagents are recommended: 1) Western Blotting: use donkey anti-goat IgG-HRP: sc-2020 (dilution range: 1:2000-1:100,000) or Cruz Marker™ compatible donkey anti-goat IgG-HRP: sc-2033 (dilution range: 1:2000-1:5000), Cruz Marker™ Molecular Weight Standards: sc-2035, TBS Blotto A Blocking Reagent: sc-2333 and Western Blotting Luminol Reagent: sc-2048. 2) Immunoprecipitation: use Protein A/G PLUS-Agarose: sc-2003 (0.5 ml agarose/2.0 ml). 3) Immunofluorescence: use donkey anti-goat IgG-FITC: sc-2024 (dilution range: 1:100-1:400) or donkey anti-goat IgG-TR: sc-2783 (dilution range: 1:100-1:400) with UltraCruz™ Mounting Medium: sc-24941.

DATA



SerpinB11 (G-20): sc-85140. Western blot analysis of SerpinB11 expression in HeLa (A), U-698-M (B) and MES-SA/Dx5 (C) whole cell lysates.

STORAGE

Store at 4° C, ****DO NOT FREEZE****. Stable for one year from the date of shipment. Non-hazardous. No MSDS required.