

SerpinB12 (S-15): sc-85145

BACKGROUND

The serine proteinase inhibitors (serpins) compose a superfamily of proteins with a diverse set of functions, including the control of blood coagulation, complement activation, programmed cell death and development. Serpins are secreted glycoproteins that contain a stretch of peptide that mimics a true substrate for a corresponding serine protease. SerpinB12 appears to be an inhibitor of Trypsin-like serine proteinases, including mast cell tryptases.

REFERENCES

1. Askew, Y.S., Pak, S.C., Luke, C.J., Askew, D.J., Cataltepe, S., Mills, D.R., Kato, H., Lehoczyk, J., Dewar, K., Birren, B. and Silverman, G.A. 2001. SerpinB12 is a novel member of the human ov-serpin family that is widely expressed and inhibits Trypsin-like serine proteinases. *J. Biol. Chem.* 276: 49320-49330.
2. Gettins, P.G. 2002. Serpin structure, mechanism, and function. *Chem. Rev.* 102: 4751-4804.

CHROMOSOMAL LOCATION

Genetic locus: SERPINB12 (human) mapping to 18q21.33; Serpinb12 (mouse) mapping to 1 E2.1.

SOURCE

SerpinB12 (S-15) is an affinity purified rabbit polyclonal antibody raised against a peptide mapping within an internal region of SerpinB12 of human origin.

PRODUCT

Each vial contains 100 µg IgG in 1.0 ml of PBS with < 0.1% sodium azide and 0.1% gelatin.

Blocking peptide available for competition studies, sc-85145 P, (100 µg peptide in 0.5 ml PBS containing < 0.1% sodium azide and 0.2% BSA).

APPLICATIONS

SerpinB12 (S-15) is recommended for detection of SerpinB12 of mouse, rat and human origin by Western Blotting (starting dilution 1:200, dilution range 1:100-1:1000), immunoprecipitation [1-2 µg per 100-500 µg of total protein (1 ml of cell lysate)], immunofluorescence (starting dilution 1:50, dilution range 1:50-1:500) and solid phase ELISA (starting dilution 1:30, dilution range 1:30-1:3000); non cross-reactive with other Serpin family members.

SerpinB12 (S-15) is also recommended for detection of SerpinB12 in additional species, including equine, canine and bovine.

Suitable for use as control antibody for SerpinB12 siRNA (h): sc-76477, SerpinB12 siRNA (m): sc-153366, SerpinB12 shRNA Plasmid (h): sc-76477-SH, SerpinB12 shRNA Plasmid (m): sc-153366-SH, SerpinB12 shRNA (h) Lentiviral Particles: sc-76477-V and SerpinB12 shRNA (m) Lentiviral Particles: sc-153366-V.

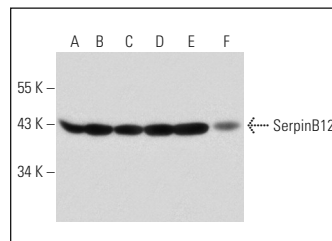
Molecular Weight of SerpinB12: 46 kDa.

Positive Controls: K-562 whole cell lysate: sc-2203, HeLa whole cell lysate: sc-2200 or JAR cell lysate: sc-2276.

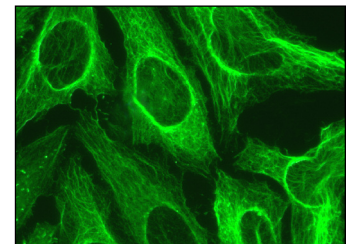
RECOMMENDED SECONDARY REAGENTS

To ensure optimal results, the following support (secondary) reagents are recommended: 1) Western Blotting: use goat anti-rabbit IgG-HRP: sc-2004 (dilution range: 1:2000-1:100,000) or Cruz Marker™ compatible goat anti-rabbit IgG-HRP: sc-2030 (dilution range: 1:2000-1:5000), Cruz Marker™ Molecular Weight Standards: sc-2035, TBS Blotto A Blocking Reagent: sc-2333 and Western Blotting Luminol Reagent: sc-2048. 2) Immunoprecipitation: use Protein A/G PLUS-Agarose: sc-2003 (0.5 ml agarose/2.0 ml). 3) Immunofluorescence: use goat anti-rabbit IgG-FITC: sc-2012 (dilution range: 1:100-1:400) or goat anti-rabbit IgG-TR: sc-2780 (dilution range: 1:100-1:400) with UltraCruz™ Mounting Medium: sc-24941.

DATA



SerpinB12 (S-15): sc-85145. Western blot analysis of SerpinB12 expression in K-562 (A), HeLa (B), JAR (C), Jurkat (D) and A549 (E) whole cell lysates and mouse lymph node tissue extract (F).



SerpinB12 (S-15): sc-85145. Immunofluorescence staining of methanol-fixed HeLa cells showing cytoplasmic and membrane localization.

STORAGE

Store at 4° C, **DO NOT FREEZE**. Stable for one year from the date of shipment. Non-hazardous. No MSDS required.

RESEARCH USE

For research use only, not for use in diagnostic procedures.

PROTOCOLS

See our web site at www.scbt.com or our catalog for detailed protocols and support products.

MONOS
Satisfaction
Guaranteed

Try **SerpinB12 (H3-1B): sc-32234**, our highly recommended monoclonal alternative to SerpinB12 (S-15).