

ZCCHC2 (C-19): sc-85221

BACKGROUND

Zinc-finger proteins contain DNA-binding domains and have a wide variety of functions, most of which encompass some form of transcriptional activation or repression. ZCCHC2 (zinc finger CCHC domain-containing protein 2) is a 1,178 amino acid protein that contains one CCHC-type zinc finger, suggesting a role in transcriptional regulation. The gene encoding ZCCHC10 maps to human chromosome 18, which encodes over 300 genes and contains nearly 76 million bases. There are a variety of diseases associated with defects in chromosome 18-localized genes, some of which include Trisomy 18 (also known as Edwards syndrome), Niemann-Pick disease, hereditary hemorrhagic telangiectasia, and erythropoietic protoporphyria. Translocation between chromosome 18 and 14 is also the most common translocation in cancers and occurs in follicular lymphomas.

REFERENCES

1. Yoshikawa, T., Sanders, A.R., Esterling, L.E., Overhauser, J., Garnes, J.A., Lennon, G., Grewal, R. and Detera-Wadleigh, S.D. 1997. Isolation of chromosome 18-specific brain transcripts as positional candidates for bipolar disorder. *Am. J. Med. Genet.* 74: 140-149.
2. Esterling, L.E., Cox Matise, T., Sanders, A.R., Yoshikawa, T., Overhauser, J., Gershon, E.S., Moskowitz, M.T. and Detera-Wadleigh, S.D. 1997. An integrated physical map of 18p11.2: a susceptibility region for bipolar disorder. *Mol. Psychiatry* 2: 501-504.
3. Yoshikawa, T., Sanders, A.R., Esterling, L.E. and Detera-Wadleigh, S.D. 1998. Multiple transcriptional variants and RNA editing in C18orf1, a novel gene with LDLRA and transmembrane domains on 18p11.2. *Genomics* 47: 246-257.
4. Petek, E., Pertl, B., Tschernigg, M., Bauer, M., Mayr, J., Wagner, K. and Kroisel, P.M. 2003. Characterisation of a 19-year-old "long-term survivor" with Edwards syndrome. *Genet. Couns.* 14: 239-244.

CHROMOSOMAL LOCATION

Genetic locus: ZCCHC2 (human) mapping to 18q21.33; Zcchc2 (mouse) mapping to 1 E2.1.

SOURCE

ZCCHC2 (C-19) is an affinity purified rabbit polyclonal antibody raised against a peptide mapping at the C-terminus of ZCCHC2 of human origin.

PRODUCT

Each vial contains 100 µg IgG in 1.0 ml of PBS with < 0.1% sodium azide and 0.1% gelatin.

Blocking peptide available for competition studies, sc-85221 P, (100 µg peptide in 0.5 ml PBS containing < 0.1% sodium azide and 0.2% BSA).

Available as TransCruz reagent for Gel Supershift and ChIP applications, sc-85221 X, 100 µg/0.1 ml.

RESEARCH USE

For research use only, not for use in diagnostic procedures.

APPLICATIONS

ZCCHC2 (C-19) is recommended for detection of ZCCHC2 of mouse, rat and human origin by Western Blotting (starting dilution 1:200, dilution range 1:100-1:1000), immunoprecipitation [1-2 µg per 100-500 µg of total protein (1 ml of cell lysate)], immunofluorescence (starting dilution 1:50, dilution range 1:50-1:500) and solid phase ELISA (starting dilution 1:30, dilution range 1:30-1:3000); non cross-reactive with ZCCHC11.

ZCCHC2 (C-19) is also recommended for detection of ZCCHC2 in additional species, including equine, canine and avian.

Suitable for use as control antibody for ZCCHC2 siRNA (h): sc-76952, ZCCHC2 siRNA (m): sc-155477, ZCCHC2 shRNA Plasmid (h): sc-76952-SH, ZCCHC2 shRNA Plasmid (m): sc-155477-SH, ZCCHC2 shRNA (h) Lentiviral Particles: sc-76952-V and ZCCHC2 shRNA (m) Lentiviral Particles: sc-155477-V.

ZCCHC2 (C-19) X TransCruz antibody is recommended for Gel Supershift and ChIP applications.

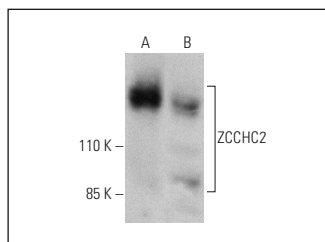
Molecular Weight of ZCCHC2: 126 kDa.

Positive Controls: human brain tissue extract or human skeletal muscle extract: sc-363776.

RECOMMENDED SECONDARY REAGENTS

To ensure optimal results, the following support (secondary) reagents are recommended: 1) Western Blotting: use goat anti-rabbit IgG-HRP: sc-2004 (dilution range: 1:2000-1:100,000) or Cruz Marker™ compatible goat anti-rabbit IgG-HRP: sc-2030 (dilution range: 1:2000-1:5000), Cruz Marker™ Molecular Weight Standards: sc-2035, TBS Blotto A Blocking Reagent: sc-2333 and Western Blotting Luminol Reagent: sc-2048. 2) Immunoprecipitation: use Protein A/G PLUS-Agarose: sc-2003 (0.5 ml agarose/2.0 ml). 3) Immunofluorescence: use goat anti-rabbit IgG-FITC: sc-2012 (dilution range: 1:100-1:400) or goat anti-rabbit IgG-TR: sc-2780 (dilution range: 1:100-1:400) with UltraCruz™ Mounting Medium: sc-24941.

DATA



ZCCHC2 (C-19): sc-85221. Western blot analysis of ZCCHC2 expression in human brain (A) and human skeletal muscle (B) tissue extracts.

STORAGE

Store at 4° C, **DO NOT FREEZE**. Stable for one year from the date of shipment. Non-hazardous. No MSDS required.