

# ARFRP1 (E-13): sc-85277

## BACKGROUND

The ADP-ribosylation factor (ARF) protein family are structurally and functionally conserved members of the Ras superfamily of regulatory GTP-binding proteins. ARFs influence vesicle trafficking and signal transduction in eukaryotic cells and they play a central role in the maintenance of organelle integrity, assembly of coat proteins and activation of phospholipase D (PC-PLD). ARFRP1 (ADP-ribosylation factor related protein 1), also known as ARP or ARL18, is a 201 amino acid membrane-associated GTPase that localizes to the plasma membrane and the Golgi apparatus and is related to the ARF family of regulatory proteins. Expressed in a variety of tissues, ARFRP1 interacts with SYS1 and is thought to be involved in plasma membrane-related signaling events. ARFRP1 exists as multiple alternatively spliced isoforms and is encoded by a gene which maps to a gene cluster on chromosome 20q13.33 that is commonly overexpressed in tumors, suggesting a role for ARFRP1 in carcinogenesis.

## CHROMOSOMAL LOCATION

Genetic locus: ARFRP1 (human) mapping to 20q13.33; Arfrp1 (mouse) mapping to 2 H4.

## SOURCE

ARFRP1 (E-13) is an affinity purified rabbit polyclonal antibody raised against a peptide mapping within an internal region of ARFRP1 of human origin.

## PRODUCT

Each vial contains 100 µg IgG in 1.0 ml of PBS with < 0.1% sodium azide and 0.1% gelatin.

Blocking peptide available for competition studies, sc-85277 P, (100 µg peptide in 0.5 ml PBS containing < 0.1% sodium azide and 0.2% BSA).

## STORAGE

Store at 4° C, **\*\*DO NOT FREEZE\*\***. Stable for one year from the date of shipment. Non-hazardous. No MSDS required.

## APPLICATIONS

ARFRP1 (E-13) is recommended for detection of ARFRP1 of mouse, rat and human origin by Western Blotting (starting dilution 1:200, dilution range 1:100-1:1000), immunoprecipitation [1-2 µg per 100-500 µg of total protein (1 ml of cell lysate)], immunofluorescence (starting dilution 1:50, dilution range 1:50-1:500) and solid phase ELISA (starting dilution 1:30, dilution range 1:30-1:3000).

ARFRP1 (E-13) is also recommended for detection of ARFRP1 in additional species, including equine, canine, bovine and avian.

Suitable for use as control antibody for ARFRP1 siRNA (h): sc-72531, ARFRP1 siRNA (m): sc-141192, ARFRP1 shRNA Plasmid (h): sc-72531-SH, ARFRP1 shRNA Plasmid (m): sc-141192-SH, ARFRP1 shRNA (h) Lentiviral Particles: sc-72531-V and ARFRP1 shRNA (m) Lentiviral Particles: sc-141192-V.

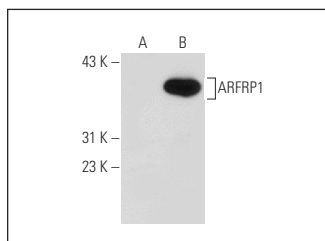
Molecular Weight of ARFRP1: 25 kDa.

Positive Controls: ARFRP1 (m): 293T Lysate: sc-110733 or Hep G2 cell lysate: sc-2227.

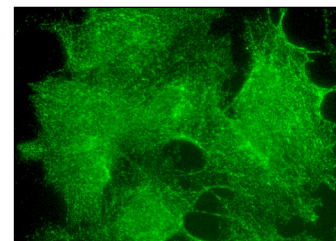
## RECOMMENDED SECONDARY REAGENTS

To ensure optimal results, the following support (secondary) reagents are recommended: 1) Western Blotting: use goat anti-rabbit IgG-HRP: sc-2004 (dilution range: 1:2000-1:100,000) or Cruz Marker™ compatible goat anti-rabbit IgG-HRP: sc-2030 (dilution range: 1:2000-1:5000), Cruz Marker™ Molecular Weight Standards: sc-2035, TBS Blotto A Blocking Reagent: sc-2333 and Western Blotting Luminol Reagent: sc-2048. 2) Immunoprecipitation: use Protein A/G PLUS-Agarose: sc-2003 (0.5 ml agarose/2.0 ml). 3) Immunofluorescence: use goat anti-rabbit IgG-FITC: sc-2012 (dilution range: 1:100-1:400) or goat anti-rabbit IgG-TR: sc-2780 (dilution range: 1:100-1:400) with UltraCruz™ Mounting Medium: sc-24941.

## DATA



ARFRP1 (E-13): sc-85277. Western blot analysis of ARFRP1 expression in non-transfected: sc-110760 (A) and mouse ARFRP1 transfected: sc-110733 (B) 293 whole cell lysates.



ARFRP1 (E-13): sc-85277. Immunofluorescence staining of formalin-fixed Hep G2 cells showing membrane localization.

## RESEARCH USE

For research use only, not for use in diagnostic procedures.

## PROTOCOLS

See our web site at [www.scbt.com](http://www.scbt.com) or our catalog for detailed protocols and support products.

**MONOS**  
Satisfaction  
Guaranteed

Try **ARFRP1 (A-8): sc-398568**, our highly recommended monoclonal alternative to ARFRP1 (E-13).