

TTP- α L (C-20): sc-85336

BACKGROUND

TTP- α L (tocopherol α transfer protein-like) is a 342 amino acid protein that is thought to bind hydrophobic ligands. Containing one CRAL-TRIO domain, TTP- α L is encoded by a gene that maps to human chromosome 20q13.12. Comprising approximately 2% of the human genome, chromosome 20 contains nearly 63 million bases that encode over 600 genes, some of which are associated with Creutzfeldt-Jakob disease, amyotrophic lateral sclerosis, spinal muscular atrophy, ring chromosome 20 epilepsy syndrome and Alagille syndrome. Additionally, chromosome 20 contains a region with numerous genes which are thought to be important for seminal production and may be potential targets for male contraception.

REFERENCES

- Barrios-Rodiles, M., et al. 2005. High-throughput mapping of a dynamic signaling network in mammalian cells. *Science* 307: 1621-1625.
- Ville, D., et al. 2006. Early pattern of epilepsy in the ring chromosome 20 syndrome. *Epilepsia* 47: 543-549.
- Joó, J.G., et al. 2006. Trisomy 20 mosaicism and nonmosaic trisomy 20: a report of 2 cases. *J. Reprod. Med.* 51: 209-212.
- Fulbright, R.K., et al. 2006. The imaging appearance of Creutzfeldt-Jakob disease caused by the E200K mutation. *Magn. Reson. Imaging* 24: 1121-1129.
- Lundwall, A. 2007. A locus on chromosome 20 encompassing genes that are highly expressed in the epididymis. *Asian J. Androl.* 9: 540-544.
- Robert, M.L., et al. 2007. Alagille syndrome with deletion 20p12.2-p12.3 and hypoplastic left heart. *Clin. Dysmorphol.* 16: 241-246.
- Elghezal, H., et al. 2007. Ring chromosome 20 syndrome without deletions of the subtelomeric and CHRNA4—KCNQ2 genes loci. *Eur. J. Med. Genet.* 50: 441-445.
- O'Rand, M.G., et al. 2007. Eppin: an epididymal protease inhibitor and a target for male contraception. *Soc. Reprod. Fertil. Suppl.* 63: 445-453.

CHROMOSOMAL LOCATION

Genetic locus: TTPAL (human) mapping to 20q13.12; Ttpal (mouse) mapping to 2 H3.

SOURCE

TTP- α L (C-20) is an affinity purified rabbit polyclonal antibody raised against a peptide mapping near the C-terminus of TTP- α L of human origin.

PRODUCT

Each vial contains 100 μ g IgG in 1.0 ml of PBS with < 0.1% sodium azide and 0.1% gelatin.

Blocking peptide available for competition studies, sc-85336 P, (100 μ g peptide in 0.5 ml PBS containing < 0.1% sodium azide and 0.2% BSA).

RESEARCH USE

For research use only, not for use in diagnostic procedures.

APPLICATIONS

TTP- α L (C-20) is recommended for detection of TTP- α L of mouse, rat and human origin by Western Blotting (starting dilution 1:200, dilution range 1:100-1:1000), immunoprecipitation [1-2 μ g per 100-500 μ g of total protein (1 ml of cell lysate)], immunofluorescence (starting dilution 1:50, dilution range 1:50-1:500) and solid phase ELISA (starting dilution 1:30, dilution range 1:30-1:3000).

TTP- α L (C-20) is also recommended for detection of TTP- α L in additional species, including equine and canine.

Suitable for use as control antibody for TTP- α L siRNA (h): sc-72702, TTP- α L siRNA (m): sc-154799, TTP- α L shRNA Plasmid (h): sc-72702-SH, TTP- α L shRNA Plasmid (m): sc-154799-SH, TTP- α L shRNA (h) Lentiviral Particles: sc-72702-V and TTP- α L shRNA (m) Lentiviral Particles: sc-154799-V.

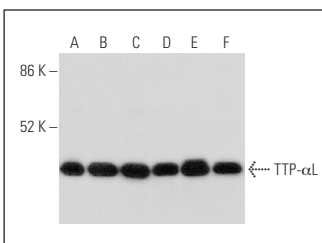
Molecular Weight of TTP- α L: 39 kDa.

Positive Controls: NIH/3T3 whole cell lysate: sc-2210, PC-12 cell lysate: sc-2250 or HEK293 whole cell lysate: sc-45136.

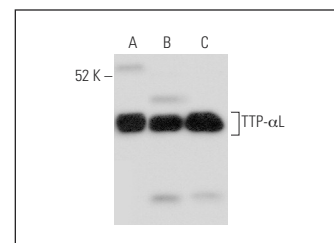
RECOMMENDED SECONDARY REAGENTS

To ensure optimal results, the following support (secondary) reagents are recommended: 1) Western Blotting: use goat anti-rabbit IgG-HRP: sc-2004 (dilution range: 1:2000-1:100,000) or Cruz Marker™ compatible goat anti-rabbit IgG-HRP: sc-2030 (dilution range: 1:2000-1:5000), Cruz Marker™ Molecular Weight Standards: sc-2035, TBS Blotto A Blocking Reagent: sc-2333 and Western Blotting Luminol Reagent: sc-2048. 2) Immunoprecipitation: use Protein A/G PLUS-agarose: sc-2003 (0.5 ml agarose/2.0 ml). 3) Immunofluorescence: use goat anti-rabbit IgG-FITC: sc-2012 (dilution range: 1:100-1:400) or goat anti-rabbit IgG-TR: sc-2780 (dilution range: 1:100-1:400) with UltraCruz™ Mounting Medium: sc-24941.

DATA



TTP- α L (C-20): sc-85336. Western blot analysis of TTP- α L expression in HeLa (A), Jurkat (B), K-562 (C), Hep G2 (D), SW480 (E) and MCF7 (F) whole cell lysates.



TTP- α L (C-20): sc-85336. Western blot analysis of TTP- α L expression in NIH/3T3 (A), PC-12 (B) and HEK293 (C) whole cell lysates.

STORAGE

Store at 4° C, **DO NOT FREEZE**. Stable for one year from the date of shipment. Non-hazardous. No MSDS required.

PROTOCOLS

See our web site at www.scbt.com or our catalog for detailed protocols and support products.