

SPATA25 (N-18): sc-85370

BACKGROUND

SPATA25 (spermatogenesis-associated protein 25), also known as TSG23 (testis-specific gene 23 protein), is a 227 amino acid single-pass membrane protein that is thought to play a role in spermatogenesis. Predominantly expressed in testis, SPATA25 is found at 60-fold higher levels in adult testis than fetal testis. The gene encoding SPATA25 maps to human chromosome 20q13.12 and mouse chromosome 2 H3. Comprising approximately 2% of the human genome, chromosome 20 contains nearly 63 million bases that encode over 600 genes, some of which are associated with Creutzfeldt-Jakob disease, amyotrophic lateral sclerosis, spinal muscular atrophy, ring chromosome 20 epilepsy syndrome and Alagille syndrome. Additionally, chromosome 20 contains a region with numerous genes which are thought to be important for seminal production and may be potential targets for male contraception.

REFERENCES

- Ville, D., et al. 2006. Early pattern of epilepsy in the ring chromosome 20 syndrome. *Epilepsia* 47: 543-549.
- Joo, J.G., et al. 2006. Trisomy 20 mosaicism and nonmosaic trisomy 20: a report of 2 cases. *J. Reprod. Med.* 51: 209-212.
- Fulbright, R.K., et al. 2006. The imaging appearance of Creutzfeldt-Jakob disease caused by the E200K mutation. *Magn. Reson. Imaging* 24: 1121-1129.
- Lundwall, A. 2007. A locus on chromosome 20 encompassing genes that are highly expressed in the epididymis. *Asian J. Androl.* 9: 540-544.
- Robert, M.L., et al. 2007. Alagille syndrome with deletion 20p12.2-p12.3 and hypoplastic left heart. *Clin. Dysmorphol.* 16: 241-246.
- Elghezal, H., et al. 2007. Ring chromosome 20 syndrome without deletions of the subtelomeric and CHRNA4-KCNQ2 genes loci. *Eur. J. Med. Genet.* 50: 441-445.
- O'Rand, M.G., et al. 2007. Eppin: an epididymal protease inhibitor and a target for male contraception. *Soc. Reprod. Fertil. Suppl.* 63: 445-453.
- Zhou, Y., et al. 2009. Developmental expression pattern of a novel gene, TSG23/Tsg23, suggests a role in spermatogenesis. *Mol. Hum. Reprod.* 15: 223-230.

CHROMOSOMAL LOCATION

Genetic locus: SPATA25 (human) mapping to 20q13.12; Spata25 (mouse) mapping to 2 H3.

PRODUCT

Each vial contains 100 µg IgG in 1.0 ml of PBS with < 0.1% sodium azide and 0.1% gelatin.

Blocking peptide available for competition studies, sc-85370 P, (100 µg peptide in 0.5 ml PBS containing < 0.1% sodium azide and 0.2% BSA).

SOURCE

SPATA25 (N-18) is an affinity purified rabbit polyclonal antibody raised against a peptide mapping within an internal region of SPATA25 of human origin.

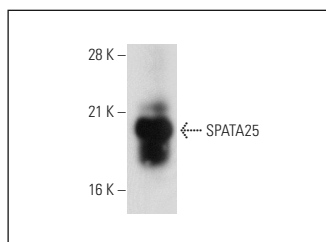
APPLICATIONS

SPATA25 (N-18) is recommended for detection of SPATA25 of human and, to a lesser extent, mouse and rat origin by Western Blotting (starting dilution 1:200, dilution range 1:100-1:1000), immunoprecipitation [1-2 µg per 100-500 µg of total protein (1 ml of cell lysate)], immunofluorescence (starting dilution 1:50, dilution range 1:50-1:500), immunohistochemistry (including paraffin-embedded sections) (starting dilution 1:50, dilution range 1:50-1:500) and solid phase ELISA (starting dilution 1:30, dilution range 1:30-1:3000).

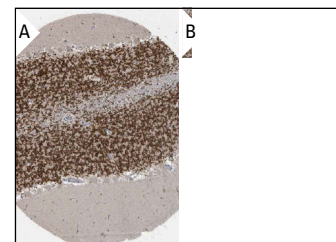
Suitable for use as control antibody for SPATA25 siRNA (h): sc-72715, SPATA25 siRNA (m): sc-141861, SPATA25 shRNA Plasmid (h): sc-72715-SH, SPATA25 shRNA Plasmid (m): sc-141861-SH, SPATA25 shRNA (h) Lentiviral Particles: sc-72715-V and SPATA25 shRNA (m) Lentiviral Particles: sc-141861-V.

Molecular Weight of SPATA25: 24 kDa.

DATA



SPATA25 (N-18): sc-85370. Western blot analysis of SPATA25 expression in mouse testis tissue extract.



SPATA25 (N-18): sc-85370. Immunoperoxidase staining of formalin fixed, paraffin-embedded human cerebellum tissue showing nuclear staining of cells in granular layer in low (A) and high (B) resolution. Kindly provided by The Swedish Human Protein Atlas (HPA) program.

STORAGE

Store at 4° C, ****DO NOT FREEZE****. Stable for one year from the date of shipment. Non-hazardous. No MSDS required.

RESEARCH USE

For research use only, not for use in diagnostic procedures.

PROTOCOLS

See our web site at www.scbt.com or our catalog for detailed protocols and support products.

MONOS
Satisfaction
Guaranteed

Try **SPATA25 (H-3): sc-374631**, our highly recommended monoclonal alternative to SPATA25 (N-18).