

SPATA25 (Q-16): sc-85371

BACKGROUND

SPATA25 (spermatogenesis-associated protein 25), also known as TSG23 (testis-specific gene 23 protein), is a 227 amino acid single-pass membrane protein that is thought to play a role in spermatogenesis. Predominantly expressed in testis, SPATA25 is found at 60-fold higher levels in adult testis than fetal testis. The gene encoding SPATA25 maps to human chromosome 20q13.12 and mouse chromosome 2 H3. Comprising approximately 2% of the human genome, chromosome 20 contains nearly 63 million bases that encode over 600 genes, some of which are associated with Creutzfeldt-Jakob disease, amyotrophic lateral sclerosis, spinal muscular atrophy, ring chromosome 20 epilepsy syndrome and Alagille syndrome. Additionally, chromosome 20 contains a region with numerous genes which are thought to be important for seminal production and may be potential targets for male contraception.

REFERENCES

- Ville, D., et al. 2006. Early pattern of epilepsy in the ring chromosome 20 syndrome. *Epilepsia* 47: 543-549.
- Joó, J.G., et al. 2006. Trisomy 20 mosaicism and nonmosaic trisomy 20: a report of 2 cases. *J. Reprod. Med.* 51: 209-212.
- Fulbright, R.K., et al. 2006. The imaging appearance of Creutzfeldt-Jakob disease caused by the E200K mutation. *Magn. Reson. Imaging* 24: 1121-1129.
- Lundwall, A. 2007. A locus on chromosome 20 encompassing genes that are highly expressed in the epididymis. *Asian J. Androl.* 9: 540-544.
- Robert, M.L., et al. 2007. Alagille syndrome with deletion 20p12.2-p12.3 and hypoplastic left heart. *Clin. Dysmorphol.* 16: 241-246.
- Elghezal, H., et al. 2007. Ring chromosome 20 syndrome without deletions of the subtelomeric and CHRNA4-KCNQ2 genes loci. *Eur. J. Med. Genet.* 50: 441-445.
- O'Rand, M.G., et al. 2007. Eppin: an epididymal protease inhibitor and a target for male contraception. *Soc. Reprod. Fertil. Suppl.* 63: 445-453.

CHROMOSOMAL LOCATION

Genetic locus: SPATA25 (human) mapping to 20q13.12; Spata25 (mouse) mapping to 2 H3.

SOURCE

SPATA25 (Q-16) is an affinity purified rabbit polyclonal antibody raised against a peptide mapping within an internal region of SPATA25 of human origin.

PRODUCT

Each vial contains 100 µg IgG in 1.0 ml of PBS with < 0.1% sodium azide and 0.1% gelatin.

Blocking peptide available for competition studies, sc-85371 P, (100 µg peptide in 0.5 ml PBS containing < 0.1% sodium azide and 0.2% BSA).

APPLICATIONS

SPATA25 (Q-16) is recommended for detection of SPATA25 of mouse, rat and human origin by Western Blotting (starting dilution 1:200, dilution range 1:100-1:1000), immunoprecipitation [1-2 µg per 100-500 µg of total protein (1 ml of cell lysate)], immunofluorescence (starting dilution 1:50, dilution range 1:50-1:500) and solid phase ELISA (starting dilution 1:30, dilution range 1:30-1:3000).

SPATA25 (Q-16) is also recommended for detection of SPATA25 in additional species, including equine, canine, bovine and porcine.

Suitable for use as control antibody for SPATA25 siRNA (h): sc-72715, SPATA25 siRNA (m): sc-141861, SPATA25 shRNA Plasmid (h): sc-72715-SH, SPATA25 shRNA Plasmid (m): sc-141861-SH, SPATA25 shRNA (h) Lentiviral Particles: sc-72715-V and SPATA25 shRNA (m) Lentiviral Particles: sc-141861-V.

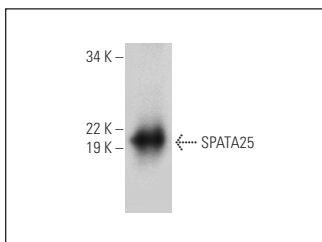
Molecular Weight of SPATA25: 24 kDa.

Positive Controls: mouse testis extract: sc-2405 or rat testis extract: sc-2400.

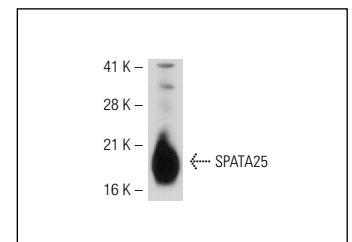
RECOMMENDED SECONDARY REAGENTS

To ensure optimal results, the following support (secondary) reagents are recommended: 1) Western blotting: use goat anti-rabbit IgG-HRP: sc-2004 (dilution range: 1:2000-1:100,000) or Cruz Marker™ compatible goat anti-rabbit IgG-HRP: sc-2030 (dilution range: 1:2000-1:5000), Cruz Marker™ Molecular Weight Standards: sc-2035, TBS Blotto A Blocking Reagent: sc-2333 and Western Blotting Luminol Reagent: sc-2048. 2) Immunoprecipitation: use Protein A/G PLUS-Agarose: sc-2003 (0.5 ml agarose/2.0 ml). 3) Immunofluorescence: use goat anti-rabbit IgG-FITC: sc-2012 (dilution range: 1:100-1:400) or goat anti-rabbit IgG-TR: sc-2780 (dilution range: 1:100-1:400) with UltraCruz™ Mounting Medium: sc-24941.

DATA



SPATA25 (Q-16): sc-85371. Western blot analysis of SPATA25 expression in rat testis tissue extract.



SPATA25 (Q-16): sc-85371. Western blot analysis of SPATA25 expression in mouse testis tissue extract.

STORAGE

Store at 4° C, **DO NOT FREEZE**. Stable for one year from the date of shipment. Non-hazardous. No MSDS required.

RESEARCH USE

For research use only, not for use in diagnostic procedures.