

C20orf30 (Y-17): sc-85410

BACKGROUND

Representing about 2% of human DNA, chromosome 20 consists of approximately 63 million bases and 600 genes. Chromosome 20 contains a region with numerous genes expressed in the epididymis, which are thought important for seminal production, and some viewed as potential targets for male contraception. The PRNP gene encoding the prion protein associated with spongiform encephalopathies, like Creutzfeldt-Jakob disease, is found on chromosome 20. Amyotrophic lateral sclerosis, spinal muscular atrophy, ring chromosome 20 epilepsy syndrome and Alagille syndrome are also associated with chromosome 20. The C20orf30 gene product has been provisionally designated C20orf30 pending further characterization.

CHROMOSOMAL LOCATION

Genetic locus: C20orf30 (human) mapping to 20p13; Tmem230 (mouse) mapping to 2 F2.

SOURCE

C20orf30 (Y-17) is an affinity purified rabbit polyclonal antibody raised against a peptide mapping within an internal region of C20orf30 of human origin.

PRODUCT

Each vial contains 100 µg IgG in 1.0 ml of PBS with < 0.1% sodium azide and 0.1% gelatin.

Blocking peptide available for competition studies, sc-85410 P, (100 µg peptide in 0.5 ml PBS containing < 0.1% sodium azide and 0.2% BSA).

STORAGE

Store at 4° C, **DO NOT FREEZE**. Stable for one year from the date of shipment. Non-hazardous. No MSDS required.

APPLICATIONS

C20orf30 (Y-17) is recommended for detection of C20orf30 of mouse, rat and human origin by Western Blotting (starting dilution 1:200, dilution range 1:100-1:1000), immunoprecipitation [1-2 µg per 100-500 µg of total protein (1 ml of cell lysate)], immunofluorescence (starting dilution 1:50, dilution range 1:50-1:500) and solid phase ELISA (starting dilution 1:30, dilution range 1:30-1:3000).

C20orf30 (Y-17) is also recommended for detection of C20orf30 in additional species, including equine, canine, bovine, porcine and avian.

Suitable for use as control antibody for C20orf30 siRNA (h): sc-72732, C20orf30 siRNA (m): sc-141870, C20orf30 shRNA Plasmid (h): sc-72732-SH, C20orf30 shRNA Plasmid (m): sc-141870-SH, C20orf30 shRNA (h) Lentiviral Particles: sc-72732-V and C20orf30 shRNA (m) Lentiviral Particles: sc-141870-V.

Molecular Weight of (predicted) C20orf30 isoforms: 13/20 kDa.

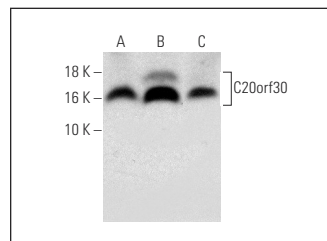
Molecular Weight of (observed) C20orf30: 16 kDa.

Positive Controls: COLO 320DM cell lysate: sc-2226, HeLa whole cell lysate: sc-2200 or SK-MEL-28 cell lysate: sc-2236.

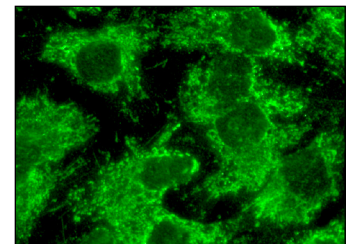
RECOMMENDED SECONDARY REAGENTS

To ensure optimal results, the following support (secondary) reagents are recommended: 1) Western Blotting: use goat anti-rabbit IgG-HRP: sc-2004 (dilution range: 1:2000-1:100,000) or Cruz Marker™ compatible goat anti-rabbit IgG-HRP: sc-2030 (dilution range: 1:2000-1:5000), Cruz Marker™ Molecular Weight Standards: sc-2035, TBS Blotto A Blocking Reagent: sc-2333 and Western Blotting Luminol Reagent: sc-2048. 2) Immunoprecipitation: use Protein A/G PLUS-Agarose: sc-2003 (0.5 ml agarose/2.0 ml). 3) Immunofluorescence: use goat anti-rabbit IgG-FITC: sc-2012 (dilution range: 1:100-1:400) or goat anti-rabbit IgG-TR: sc-2780 (dilution range: 1:100-1:400) with UltraCruz™ Mounting Medium: sc-24941.

DATA



C20orf30 (Y-17): sc-85410. Western blot analysis of C20orf30 expression in HeLa (A), SK-MEL-28 (B) and COLO 320DM (C) whole cell lysates.



C20orf30 (Y-17): sc-85410. Immunofluorescence staining of formalin-fixed Hep G2 cells showing cytoplasmic localization.

RESEARCH USE

For research use only, not for use in diagnostic procedures.

PROTOCOLS

See our web site at www.scbt.com or our catalog for detailed protocols and support products.


 MONOS
Satisfaction
Guaranteed

Try **C20orf30 (G-2): sc-398561**, our highly recommended monoclonal alternative to C20orf30 (Y-17).