

cadherin-26 (N-17): sc-85465

BACKGROUND

Cadherins comprise a family of Ca^{2+} -dependent adhesion molecules that function to mediate cell-cell binding critical to the maintenance of tissue structure and morphogenesis. Cadherins each contain a large extracellular domain at the amino-terminus, which is characterized by a series of five homologous repeats, the most distal of which is thought to be responsible for binding specificity. The relatively short carboxy-terminal, intracellular domain interacts with a variety of cytoplasmic proteins, including β -catenin, to regulate cadherin function. Cadherin-26 is a 852 amino acid single-pass transmembrane protein containing 4 cadherin domains through which it interacts with other cadherins in a homophilic manner. There are 4 named isoforms of cadherin-26 that are produced as a result of alternative splicing events.

REFERENCES

- Hatta, M., et al. 1991. Genomic organization and chromosomal mapping of the mouse P-cadherin gene. *Nucleic Acids Res.* 19: 4437-4441.
- Koch, P.J., et al. 1994. Desmosomal cadherins: another growing multigene family of adhesion molecules. *Curr. Opin. Cell Biol.* 6: 682-687.
- Ranscht, B. 1994. Cadherins and catenins: interactions and functions in embryonic development. *Curr. Opin. Cell Biol.* 6: 740-746.
- Hinck, L., et al. 1994. Dynamics of cadherin/catenin complex formation: novel protein interactions and pathways of complex assembly. *J. Cell Biol.* 125: 1327-1340.
- Ayalon, O., et al. 1994. Spatial and temporal relationships between cadherins and PECAM-1 in cell-cell junctions of human endothelial cells. *J. Cell Biol.* 126: 247-258.
- Tanihara, H., et al. 1994. Cloning of five human cadherins clarifies characteristic features of cadherin extracellular domain and provides further evidence for two structurally different types of cadherin. *Cell Adhes. Commun.* 2: 15-26.

CHROMOSOMAL LOCATION

Genetic locus: CDH26 (human) mapping to 20q13.33; Cdh26 (mouse) mapping to 2 H4.

SOURCE

cadherin-26 (N-17) is an affinity purified rabbit polyclonal antibody raised against a peptide mapping within an extracellular domain of cadherin-26 of human origin.

PRODUCT

Each vial contains 100 μ g IgG in 1.0 ml of PBS with < 0.1% sodium azide and 0.1% gelatin.

Blocking peptide available for competition studies, sc-85465 P, (100 μ g peptide in 0.5 ml PBS containing < 0.1% sodium azide and 0.2% BSA).

RESEARCH USE

For research use only, not for use in diagnostic procedures.

APPLICATIONS

cadherin-26 (N-17) is recommended for detection of cadherin-26 of mouse, rat and human origin by Western Blotting (starting dilution 1:200, dilution range 1:100-1:1000), immunoprecipitation [1-2 μ g per 100-500 μ g of total protein (1 ml of cell lysate)], immunofluorescence (starting dilution 1:50, dilution range 1:50-1:500) and solid phase ELISA (starting dilution 1:30, dilution range 1:30-1:3000); non cross-reactive with isoform b and isoform 4.

cadherin-26 (N-17) is also recommended for detection of cadherin-26 in additional species, including canine and bovine.

Suitable for use as control antibody for cadherin-26 siRNA (h): sc-72776, cadherin-26 siRNA (m): sc-141975, cadherin-26 shRNA Plasmid (h): sc-72776-SH, cadherin-26 shRNA Plasmid (m): sc-141975-SH, cadherin-26 shRNA (h) Lentiviral Particles: sc-72776-V and cadherin-26 shRNA (m) Lentiviral Particles: sc-141975-V.

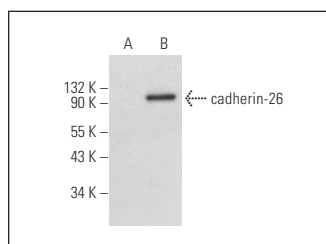
Molecular Weight of cadherin-26: 95 kDa.

Positive Controls: NIH/3T3 whole cell lysate: sc-2210 or cadherin-26 (m): 293T Lysate: sc-126566.

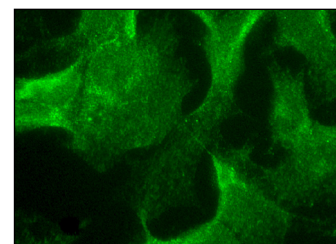
RECOMMENDED SECONDARY REAGENTS

To ensure optimal results, the following support (secondary) reagents are recommended: 1) Western Blotting: use goat anti-rabbit IgG-HRP: sc-2004 (dilution range: 1:2000-1:100,000) or Cruz Marker™ compatible goat anti-rabbit IgG-HRP: sc-2030 (dilution range: 1:2000-1:5000), Cruz Marker™ Molecular Weight Standards: sc-2035, TBS Blotto A Blocking Reagent: sc-2333 and Western Blotting Luminol Reagent: sc-2048. 2) Immunoprecipitation: use Protein A/G PLUS-Agarose: sc-2003 (0.5 ml agarose/2.0 ml). 3) Immunofluorescence: use goat anti-rabbit IgG-FITC: sc-2012 (dilution range: 1:100-1:400) or goat anti-rabbit IgG-TR: sc-2780 (dilution range: 1:100-1:400) with UltraCruz™ Mounting Medium: sc-24941.

DATA



cadherin-26 (N-17): sc-85465. Western blot analysis of cadherin-26 expression in non-transfected: sc-117752 (A) and mouse cadherin-26 transfected: sc-126566 (B) 293T whole cell lysates.



cadherin-26 (N-17): sc-85465. Immunofluorescence staining of methanol-fixed Hep G2 cells showing membrane localization.

STORAGE

Store at 4° C, **DO NOT FREEZE**. Stable for one year from the date of shipment. Non-hazardous. No MSDS required.

PROTOCOLS

See our web site at www.scbt.com or our catalog for detailed protocols and support products.