

copine 1 (E-18): sc-85497

BACKGROUND

Copine I, also known as CPNE1, copine-1, CPN1 or COPN1, is a member of the copine family of evolutionarily conserved, soluble, calcium-dependent, membrane-binding proteins. Members of the copine family are involved in signal transduction and membrane trafficking. Copine I is ubiquitously expressed and contains two N-terminal C2 domains and one C-terminal VWFA (von Willebrand factor A) domain, which is also referred to as the A domain or the core domain. As is characteristic of the copine family, copine I functions in membrane trafficking and is capable of binding phospholipids in a calcium-dependent manner. Copine I is also able to bind liposomes. Via its VWFA domain, copine I directly interacts with the ubiquitin-conjugating enzyme, UBC12, and may play a role in the regulation of TNF α -signaling.

REFERENCES

- Creutz, C.E., et al. 1998. The copines, a novel class of C2 domain-containing, calcium-dependent, phospholipid-binding proteins conserved from *Paramecium* to humans. *J. Biol. Chem.* 273: 1393-1402.
- Tomsig, J.L., et al. 2000. Biochemical characterization of copine: a ubiquitous Ca²⁺-dependent, phospholipid-binding protein. *Biochemistry* 39: 16163-16175.
- Jambunathan, N., et al. 2001. A humidity-sensitive *Arabidopsis* copine mutant exhibits precocious cell death and increased disease resistance. *Plant Cell* 13: 2225-2240.
- Cowland, J.B., et al. 2003. Tissue expression of copines and isolation of copines I and III from the cytosol of human neutrophils. *J. Leukoc. Biol.* 74: 379-388.
- Tomsig, J.L., et al. 2003. Identification of targets for calcium signaling through the copine family of proteins. Characterization of a coiled-coil copine-binding motif. *J. Biol. Chem.* 278: 10048-10054.
- Tomsig, J.L., et al. 2004. Calcium-dependent regulation of tumour necrosis factor- α receptor signalling by copine. *Biochem. J.* 378: 1089-1094.
- Damer, C.K., et al. 2005. Copine A, a calcium-dependent membrane-binding protein, transiently localizes to the plasma membrane and intracellular vacuoles in *Dictyostelium*. *BMC Cell Biol.* 6: 46-46.
- Liu, J., et al. 2005. Transgenic expression of the von Willebrand A domain of the BONZAI 1/copine 1 protein triggers a lesion-mimic phenotype in *Arabidopsis*. *Planta* 221: 85-94.

CHROMOSOMAL LOCATION

Genetic locus: CPNE1 (human) mapping to 20q11.22; Cpne1 (mouse) mapping to 2 H1.

SOURCE

copine 1 (E-18) is an affinity purified rabbit polyclonal antibody raised against a peptide mapping within an internal region of copine 1 of human origin.

STORAGE

Store at 4° C, ****DO NOT FREEZE****. Stable for one year from the date of shipment. Non-hazardous. No MSDS required.

PRODUCT

Each vial contains 100 μ g IgG in 1.0 ml of PBS with < 0.1% sodium azide and 0.1% gelatin.

Blocking peptide available for competition studies, sc-85497 P, (100 μ g peptide in 0.5 ml PBS containing < 0.1% sodium azide and 0.2% BSA).

APPLICATIONS

copine 1 (E-18) is recommended for detection of copine 1 of mouse, rat and human origin by Western Blotting (starting dilution 1:200, dilution range 1:100-1:1000), immunoprecipitation [1-2 μ g per 100-500 μ g of total protein (1 ml of cell lysate)], immunofluorescence (starting dilution 1:50, dilution range 1:50-1:500) and solid phase ELISA (starting dilution 1:30, dilution range 1:30-1:3000).

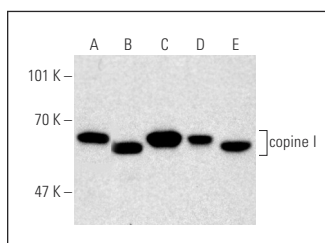
copine 1 (E-18) is also recommended for detection of copine 1 in additional species, including equine, canine, bovine and porcine.

Suitable for use as control antibody for copine 1 siRNA (h): sc-72972, copine 1 siRNA (m): sc-142511, copine 1 shRNA Plasmid (h): sc-72972-SH, copine 1 shRNA Plasmid (m): sc-142511-SH, copine 1 shRNA (h) Lentiviral Particles: sc-72972-V and copine 1 shRNA (m) Lentiviral Particles: sc-142511-V.

Molecular Weight of copine I: 60 kDa.

Positive Controls: HeLa whole cell lysate: sc-2200, K-562 whole cell lysate: sc-2203 or NIH/3T3 whole cell lysate: sc-2210.

DATA



copine I (E-18): sc-85497. Western blot analysis of copine I expression in HeLa (A), NIH/3T3 (B), CCRF-CEM (C), K-562 (D) and LADMAC (E) whole cell lysates.

RESEARCH USE

For research use only, not for use in diagnostic procedures.

PROTOCOLS

See our web site at www.scbt.com or our catalog for detailed protocols and support products.

MONOS
Satisfaction
Guaranteed

Try **copine 1 (Z6): sc-101269** or **copine 1/3 (E-8): sc-393249**, our highly recommended monoclonal alternatives to copine 1 (E-18).