

CRP2BP (S-20): sc-85504

BACKGROUND

CRP2BP (cysteine-rich protein 2-binding protein, CSR2-binding protein) is a 782 amino acid member of the cysteine- and glycine-rich protein family (CRP1, CRP2 and CRP3), which contain 2 zinc-binding LIM domains, LIM1 (amino-terminal) and LIM2 (carboxyl-terminal). This group is implicated in diverse cellular processes linked to differentiation, growth control and pathogenesis. The LIM domain is a conserved cysteine and histidine-containing structural module of two tandemly arranged zinc fingers. It has been identified in single or multiple copies in a variety of regulatory proteins. CRP2BP specifically interacts with the double LIM domain protein CRP2. Although present in cytoplasm, CRP2BP is mainly a nuclear protein, with highest expression in skeletal muscle and heart.

CHROMOSOMAL LOCATION

Genetic locus: CSR2BP (human) mapping to 20p11.23; Csr2bp (mouse) mapping to 2 G1.

SOURCE

CRP2BP (S-20) is an affinity purified rabbit polyclonal antibody raised against a peptide mapping within an internal region of CRP2BP of human origin.

PRODUCT

Each vial contains 100 µg IgG in 1.0 ml of PBS with < 0.1% sodium azide and 0.1% gelatin.

Blocking peptide available for competition studies, sc-85504 P, (100 µg peptide in 0.5 ml PBS containing < 0.1% sodium azide and 0.2% BSA).

STORAGE

Store at 4° C, ****DO NOT FREEZE****. Stable for one year from the date of shipment. Non-hazardous. No MSDS required.

APPLICATIONS

CRP2BP (S-20) is recommended for detection of CRP2BP of mouse, rat and human origin by Western Blotting (starting dilution 1:200, dilution range 1:100-1:1000), immunoprecipitation [1-2 µg per 100-500 µg of total protein (1 ml of cell lysate)], immunofluorescence (starting dilution 1:50, dilution range 1:50-1:500) and solid phase ELISA (starting dilution 1:30, dilution range 1:30-1:3000).

CRP2BP (S-20) is also recommended for detection of CRP2BP in additional species, including equine, canine, bovine, porcine and avian.

Suitable for use as control antibody for CRP2BP siRNA (h): sc-77030, CRP2BP siRNA (m): sc-142581, CRP2BP shRNA Plasmid (h): sc-77030-SH, CRP2BP shRNA Plasmid (m): sc-142581-SH, CRP2BP shRNA (h) Lentiviral Particles: sc-77030-V and CRP2BP shRNA (m) Lentiviral Particles: sc-142581-V.

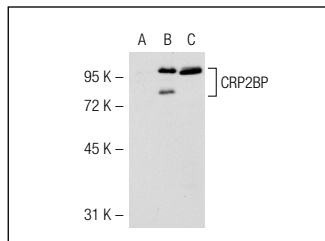
Molecular Weight of CRP2BP: 89 kDa.

Positive Controls: CRP2BP (m): 293T Lysate: sc-126668 or A-673 nuclear extract: sc-2128.

RECOMMENDED SECONDARY REAGENTS

To ensure optimal results, the following support (secondary) reagents are recommended: 1) Western Blotting: use goat anti-rabbit IgG-HRP: sc-2004 (dilution range: 1:2000-1:100,000) or Cruz Marker™ compatible goat anti-rabbit IgG-HRP: sc-2030 (dilution range: 1:2000-1:5000), Cruz Marker™ Molecular Weight Standards: sc-2035, TBS Blotto A Blocking Reagent: sc-2333 and Western Blotting Luminol Reagent: sc-2048. 2) Immunoprecipitation: use Protein A/G PLUS-Agarose: sc-2003 (0.5 ml agarose/2.0 ml). 3) Immunofluorescence: use goat anti-rabbit IgG-FITC: sc-2012 (dilution range: 1:100-1:400) or goat anti-rabbit IgG-TR: sc-2780 (dilution range: 1:100-1:400) with UltraCruz™ Mounting Medium: sc-24941.

DATA



CRP2BP (S-20): sc-85504. Western blot analysis of CRP2BP expression in non-transfected: sc-117752 (A) and mouse CRP2BP transfected: sc-126668 (B) 293T whole cell lysates and A-673 nuclear extract (C).

RESEARCH USE

For research use only, not for use in diagnostic procedures.

PROTOCOLS

See our web site at www.scbt.com or our catalog for detailed protocols and support products.



Try **CRP2BP (A-11): sc-398475** or **CRP2BP (G-2): sc-390057**, our highly recommended monoclonal alternatives to CRP2BP (S-20).