

# CCL14 (C-19): sc-8581

## BACKGROUND

Chemokines are members of a superfamily of inducible, secreted, pro-inflammatory cytokines. Members of the chemokine family exhibit 20 to 50% homology in their predicted amino acid sequences and are divided into four subfamilies. CCL14 belongs to the intercrine  $\beta$  (chemokine C-C) family. CCL14 has weak activities on human monocytes and acts via receptors that also recognize MIP-1 $\alpha$ . CCL14 also enhances the proliferation of CD34 myeloid progenitor cells. The processed form of CCL14, designated HCC-1(9-74), is a chemotactic factor that attracts monocytes, eosinophils and T cells and is a ligand for CCR1, CCR3 and CCR5. Various membrane-associated and soluble proteases selectively cleave specific chemokines. Precursor plasma chemokines (CXCL7, CCL14) need to be proteolytically processed to obtain receptor affinity.

## REFERENCES

- Munch, J., et al. 2002. Hemofiltrate C-C chemokine 1[9-74] causes effective internalization of CCR5 and is a potent inhibitor of R5-tropic human immunodeficiency virus type 1 strains in primary T cells and macrophages. *Antimicrob. Agents Chemother.* 46: 982-990.
- Forssmann, U., et al. 2004. *n*-Nonanoyl-C-C chemokine ligand 14, a potent C-C chemokine ligand 14 analogue that prevents the recruitment of eosinophils in allergic airway inflammation. *J. Immunol.* 173: 3456-3466.
- Shen, Y., et al. 2004. Distinct gene expression profiles in different B cell compartments in human peripheral lymphoid organs. *BMC Immunol.* 5: 20.

## CHROMOSOMAL LOCATION

Genetic locus: CCL14 (human) mapping to 17q12.

## SOURCE

CCL14 (C-19) is an affinity purified goat polyclonal antibody raised against a peptide mapping at the C-terminus of CCL14 of human origin.

## PRODUCT

Each vial contains 200  $\mu$ g IgG in 1.0 ml of PBS with < 0.1% sodium azide and 0.1% gelatin.

Blocking peptide available for competition studies, sc-8581 P, (100  $\mu$ g peptide in 0.5 ml PBS containing < 0.1% sodium azide and 0.2% BSA).

## APPLICATIONS

CCL14 (C-19) is recommended for detection of CCL14 of human origin by Western Blotting (starting dilution 1:200, dilution range 1:100-1:1000), immunoprecipitation [1-2  $\mu$ g per 100-500  $\mu$ g of total protein (1 ml of cell lysate)], immunofluorescence and immunohistochemistry (including paraffin-embedded sections) (starting dilution 1:50, dilution range 1:50-1:500) and solid phase ELISA (starting dilution 1:30, dilution range 1:30-1:3000).

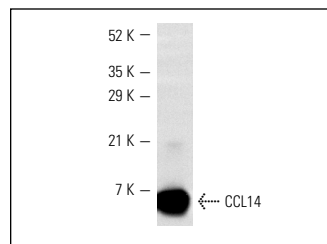
Suitable for use as control antibody for CCL14 siRNA (h): sc-45580, CCL14 shRNA Plasmid (h): sc-45580-SH and CCL14 shRNA (h) Lentiviral Particles: sc-45580-V.

Molecular Weight of CCL14: 9 kDa.

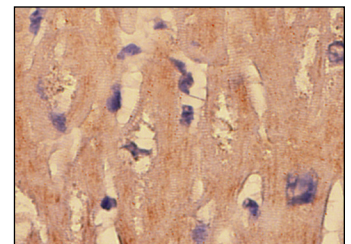
## RECOMMENDED SECONDARY REAGENTS

To ensure optimal results, the following support (secondary) reagents are recommended: 1) Western Blotting: use donkey anti-goat IgG-HRP: sc-2020 (dilution range: 1:2000-1:100,000) or Cruz Marker™ compatible donkey anti-goat IgG-HRP: sc-2033 (dilution range: 1:2000-1:5000), Cruz Marker™ Molecular Weight Standards: sc-2035, TBS Blotto A Blocking Reagent: sc-2333 and Western Blotting Luminol Reagent: sc-2048. 2) Immunoprecipitation: use Protein A/G PLUS-Agarose: sc-2003 (0.5 ml agarose/2.0 ml). 3) Immunofluorescence: use donkey anti-goat IgG-FITC: sc-2024 (dilution range: 1:100-1:400) or donkey anti-goat IgG-TR: sc-2783 (dilution range: 1:100-1:400) with UltraCruz™ Mounting Medium: sc-24941. 4) Immunohistochemistry: use ImmunoCruz™: sc-2053 or ABC: sc-2023 goat IgG Staining Systems.

## DATA



CCL14 (C-19): sc-8581. Western blot analysis of human recombinant CCL14.



CCL14 (C-19): sc-8581. Immunoperoxidase staining of formalin fixed, paraffin-embedded human heart tissue showing cytoplasmic and extracellular localization.

## STORAGE

Store at 4° C, \*\*DO NOT FREEZE\*\*. Stable for one year from the date of shipment. Non-hazardous. No MSDS required.

## RESEARCH USE

For research use only, not for use in diagnostic procedures.

## PROTOCOLS

See our web site at [www.scbt.com](http://www.scbt.com) or our catalog for detailed protocols and support products.

**MONOS**  
Satisfaction  
Guaranteed

Try **CCL14 (E-1): sc-390652** or **CCL14 (E-12): sc-376152**, our highly recommended monoclonal alternatives to CCL14 (C-19).