

PCIF1 (S-20): sc-85812

BACKGROUND

PCIF1 (phosphorylated CTD-interacting factor 1), also known as C20orf67, is a 704 amino acid nuclear protein that contains one WW domain. Expressed throughout the body, PCIF1 is thought to play a role in transcription elongation and may be involved in coupling transcription to pre-mRNA processing, specifically by interacting with the phosphorylated carboxy-terminal domain (CTD) of Pol II. Additionally, PCIF1 interacts with and inhibits the activity of PDX-1 (pancreatic and duodenal homeobox-1), thereby regulating β cell differentiation and, ultimately, contributing to normal pancreatic development. Via its ability to influence pancreatic organogenesis, PCIF1 may be involved in the pathogenesis of diabetes and may be a potential target for the therapeutic treatment of diabetes.

REFERENCES

- Kang, M.E. and Dahmus, M.E. 1993. RNA polymerases IIA and IIO have distinct roles during transcription from the TATA-less murine dihydrofolate reductase promoter. *J. Biol. Chem.* 268: 25033-25040.
- Peshavaria, M., Cissell, M.A., Henderson, E., Petersen, H.V. and Stein, R. 2000. The PDX-1 activation domain provides specific functions necessary for transcriptional stimulation in pancreatic β -cells. *Mol. Endocrinol.* 14: 1907-1917.
- Emili, A., Shales, M., McCracken, S., Xie, W., Tucker, P.W., Kobayashi, R., Blencowe, B.J. and Ingles, C.J. 2002. Splicing and transcription-associated proteins PSF and p54nrb/nonO bind to the RNA polymerase II CTD. *RNA* 8: 1102-1111.
- Fan, H., Sakuraba, K., Komuro, A., Kato, S., Harada, F. and Hirose, Y. 2003. PCIF1, a novel human WW domain-containing protein, interacts with the phosphorylated RNA polymerase II. *Biochem. Biophys. Res. Commun.* 301: 378-385.
- Liu, A., Desai, B.M. and Stoffers, D.A. 2004. Identification of PCIF1, a POZ domain protein that inhibits PDX-1 (MODY4) transcriptional activity. *Mol. Cell. Biol.* 24: 4372-4383.
- Liu, A., Oliver-Krasinski, J. and Stoffers, D.A. 2006. Two conserved domains in PCIF1 mediate interaction with pancreatic transcription factor PDX-1. *FEBS Lett.* 580: 6701-6706.
- Hirose, Y. and Ohkuma, Y. 2007. Phosphorylation of the C-terminal domain of RNA polymerase II plays central roles in the integrated events of eucaryotic gene expression. *J. Biochem.* 141: 601-608.
- Hirose, Y., Iwamoto, Y., Sakuraba, K., Yunokuchi, I., Harada, F. and Ohkuma, Y. 2008. Human phosphorylated CTD-interacting protein, PCIF1, negatively modulates gene expression by RNA polymerase II. *Biochem. Biophys. Res. Commun.* 369: 449-455.

CHROMOSOMAL LOCATION

Genetic locus: PCIF1 (human) mapping to 20q13.12; Pcif1 (mouse) mapping to 2 H3.

RESEARCH USE

For research use only, not for use in diagnostic procedures.

SOURCE

PCIF1 (S-20) is an affinity purified goat polyclonal antibody raised against a peptide mapping near the N-terminus of PCIF1 of human origin.

PRODUCT

Each vial contains 200 μ g IgG in 1.0 ml of PBS with < 0.1% sodium azide and 0.1% gelatin.

Blocking peptide available for competition studies, sc-85812 P, (100 μ g peptide in 0.5 ml PBS containing < 0.1% sodium azide and 0.2% BSA).

APPLICATIONS

PCIF1 (S-20) is recommended for detection of PCIF1 of mouse, rat and human origin by Western Blotting (starting dilution 1:200, dilution range 1:100-1:1000), immunoprecipitation [1-2 μ g per 100-500 μ g of total protein (1 ml of cell lysate)], immunofluorescence (starting dilution 1:50, dilution range 1:50-1:500) and solid phase ELISA (starting dilution 1:30, dilution range 1:30-1:3000).

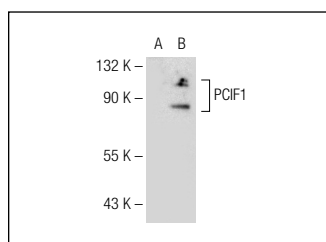
PCIF1 (S-20) is also recommended for detection of PCIF1 in additional species, including equine, canine, bovine and porcine.

Suitable for use as control antibody for PCIF1 siRNA (h): sc-76088, PCIF1 siRNA (m): sc-152111, PCIF1 shRNA Plasmid (h): sc-76088-SH, PCIF1 shRNA Plasmid (m): sc-152111-SH, PCIF1 shRNA (h) Lentiviral Particles: sc-76088-V and PCIF1 shRNA (m) Lentiviral Particles: sc-152111-V.

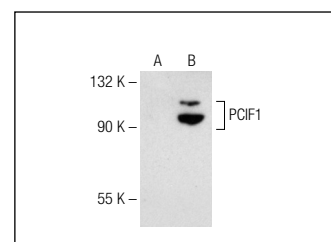
Molecular Weight of PCIF1: 80 kDa.

Positive Controls: PCIF1 (m): 293T Lysate: sc-127304 or PCIF1 (h2): 293T Lysate: sc-177711.

DATA



PCIF1 (S-20): sc-85812. Western blot analysis of PCIF1 expression in non-transfected: sc-117752 (A) and mouse PCIF1 transfected: sc-127304 (B) 293T whole cell lysates.



PCIF1 (S-20): sc-85812. Western blot analysis of PCIF1 expression in non-transfected: sc-117752 (A) and human PCIF1 transfected: sc-177711 (B) 293T whole cell lysates.

STORAGE

Store at 4° C, **DO NOT FREEZE**. Stable for one year from the date of shipment. Non-hazardous. No MSDS required.

PROTOCOLS

See our web site at www.scbt.com or our catalog for detailed protocols and support products.