

RBM12 (T-17): sc-85872

BACKGROUND

Proteins containing RNA recognition motifs, including various hnRNP proteins, are implicated in the regulation of alternative splicing and protein components of snRNPs. The RBM (RNA-binding motif) gene family encodes proteins with an RNA binding motif that have been suggested to play a role in the modulation of apoptosis. RBM12 (RNA binding motif protein 12), also known as SWAN, HRIHFB2091 or KIAA0765, is a 932 amino acid protein which localizes to the nucleus. RBM12 contains multiple proline-rich regions, transmembrane domains and three RNA recognition motifs (RRM). It has been found that the genes for RBM12 and copine I (CPNE1) overlap at human chromosome location 20q11.22, sharing the promoter region and a 5'UTR (which are conserved in human, zebrafish and mouse), suggesting that a functional interaction between the two genes may exist.

REFERENCES

1. Nagase, T., Ishikawa, K., Suyama, M., Kikuno, R., Miyajima, N., Tanaka, A., Kotani, H., Nomura, N. and Ohara, O. 1998. Prediction of the coding sequences of unidentified human genes. XI. The complete sequences of 100 new cDNA clones from brain which code for large proteins *in vitro*. DNA Res. 5: 277-286.
2. Stover, C., Gradl, G., Jentsch, I., Speicher, M.R., Wieser, R. and Schwaebler, W. 2001. cDNA cloning, chromosome assignment, and genomic structure of a human gene encoding a novel member of the RBM family. Cytogenet. Cell Genet. 92: 225-230.
3. Online Mendelian Inheritance in Man, OMIM™. 2002. Johns Hopkins University, Baltimore, MD. MIM Number: 607179. World Wide Web URL: <http://www.ncbi.nlm.nih.gov/omim/>
4. Maris, C., Dominguez, C. and Allain, F.H. 2005. The RNA recognition motif, a plastic RNA-binding platform to regulate post-transcriptional gene expression. FEBS J. 272: 2118-2131.
5. Yang, W., Ng, P., Zhao, M., Wong, T.K., Yiu, S.M. and Lau, Y.L. 2008. Promoter-sharing by different genes in human genome—CPNE1 and RBM12 gene pair as an example. BMC Genomics 9: 456.

CHROMOSOMAL LOCATION

Genetic locus: RBM12 (human) mapping to 20q11.22; Rbm12 (mouse) mapping to 2 H1.

SOURCE

RBM12 (T-17) is an affinity purified goat polyclonal antibody raised against a peptide mapping near the C-terminus of RBM12 of human origin.

PRODUCT

Each vial contains 200 µg IgG in 1.0 ml of PBS with < 0.1% sodium azide and 0.1% gelatin.

Blocking peptide available for competition studies, sc-85872 P, (100 µg peptide in 0.5 ml PBS containing < 0.1% sodium azide and 0.2% BSA).

APPLICATIONS

RBM12 (T-17) is recommended for detection of RBM12 of mouse, rat and human origin by Western Blotting (starting dilution 1:200, dilution range 1:100-1:1000), immunoprecipitation [1-2 µg per 100-500 µg of total protein (1 ml of cell lysate)], immunofluorescence (starting dilution 1:50, dilution range 1:50-1:500) and solid phase ELISA (starting dilution 1:30, dilution range 1:30-1:3000); non cross-reactive with other RBM family members.

RBM12 (T-17) is also recommended for detection of RBM12 in additional species, including equine, canine, bovine, porcine and avian.

Suitable for use as control antibody for RBM12 siRNA (h): sc-76364, RBM12 siRNA (m): sc-152725, RBM12 shRNA Plasmid (h): sc-76364-SH, RBM12 shRNA Plasmid (m): sc-152725-SH, RBM12 shRNA (h) Lentiviral Particles: sc-76364-V and RBM12 shRNA (m) Lentiviral Particles: sc-152725-V.

Molecular Weight (predicted) of RBM12: 97 kDa.

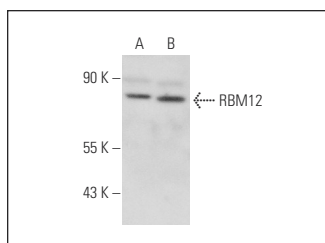
Molecular Weight (observed) of RBM12: 85 kDa.

Positive Controls: THP-1 cell lysate: sc-2238 or K-562 whole cell lysate: sc-2203.

RECOMMENDED SECONDARY REAGENTS

To ensure optimal results, the following support (secondary) reagents are recommended: 1) Western Blotting: use donkey anti-goat IgG-HRP: sc-2020 (dilution range: 1:2000-1:100,000) or Cruz Marker™ compatible donkey anti-goat IgG-HRP: sc-2033 (dilution range: 1:2000-1:5000), Cruz Marker™ Molecular Weight Standards: sc-2035, TBS Blotto A Blocking Reagent: sc-2333 and Western Blotting Luminol Reagent: sc-2048. 2) Immunoprecipitation: use Protein A/G PLUS-Agarose: sc-2003 (0.5 ml agarose/2.0 ml). 3) Immunofluorescence: use donkey anti-goat IgG-FITC: sc-2024 (dilution range: 1:100-1:400) or donkey anti-goat IgG-TR: sc-2783 (dilution range: 1:100-1:400) with UltraCruz™ Mounting Medium: sc-24941.

DATA



RBM12 (T-17): sc-85872. Western blot analysis of RBM12 expression in THP-1 (A) and K-562 (B) whole cell lysates.

STORAGE

Store at 4° C, **DO NOT FREEZE**. Stable for one year from the date of shipment. Non-hazardous. No MSDS required.

RESEARCH USE

For research use only, not for use in diagnostic procedures.