

RBP-L (G-17): sc-85878

BACKGROUND

Recombination signal binding protein for immunoglobulin κ J region-like (RBP-L), whose alternative names include recombining binding protein suppressor of hairless-like protein, SUH, RBPJL, SUHL and RBPSUHL, is a 516 amino acid transcription factor belonging to the Suppressor of Hairless [Su(H)] family. RBP-L is closely related to RBP-J κ (recombination signal binding protein κ), a transcription factor involved in the Notch signaling pathway. RBP-L binds DNA sequences nearly identical to that of RBP-J κ , however, RBP-L does not interact with Notch receptors. RBP-L localizes to the nucleus and is known to interact weakly with EBNA2 (Epstein-Barr virus nuclear antigen-2) to activate transcription. RBP-L contains one IPT/TIG domain and shows almost exclusive expression in lung. The gene encoding RBP-L maps to human chromosome 20q13.12.

REFERENCES

- Amakawa, R., Jing, W., Ozawa, K., Matsunami, N., Hamaguchi, Y., Matsuda, F., Kawaichi, M. and Honjo, T. 1993. Human J κ recombination signal binding protein gene (IGKJRB): comparison with its mouse homologue. *Genomics* 17: 306-315.
- Waltzer, L., Logeat, F., Brou, C., Israel, A., Sergeant, A. and Manet, E. 1994. The human J κ recombination signal sequence binding protein (RBP-J κ) targets the Epstein-Barr virus EBNA2 protein to its DNA responsive elements. *EMBO J.* 13: 5633-5638.
- Minoguchi, S., Taniguchi, Y., Kato, H., Okazaki, T., Strobl, L.J., Zimmer-Strobl, U., Bornkamm, G.W. and Honjo, T. 1997. RBP-L, a transcription factor related to RBP-J κ . *Mol. Cell. Biol.* 17: 2679-2687.
- Tani, S., Taniwaki, M., Taniguchi, Y., Minoguchi, S., Kuroda, K., Han, H., Aoki, T., Miyatake, S., Hashimoto, N. and Honjo, T. 1999. Chromosomal mapping of two RBP-J-related genes: Kyo-T and RBP-L. *J. Hum. Genet.* 44: 73-75.
- Beres, T.M., Masui, T., Swift, G.H., Shi, L., Henke, R.M. and MacDonald, R.J. 2006. PTF1 is an organ-specific and Notch-independent basic helix-loop-helix complex containing the mammalian Suppressor of Hairless (RBP-J) or its paralogue, RBP-L. *Mol. Cell. Biol.* 26: 117-130.

CHROMOSOMAL LOCATION

Genetic locus: RBPJL (human) mapping to 20q13.12; Rbpjl (mouse) mapping to 2 H3.

SOURCE

RBP-L (G-17) is an affinity purified goat polyclonal antibody raised against a peptide mapping within an internal region of RBP-L of human origin.

PRODUCT

Each vial contains 200 μ g IgG in 1.0 ml of PBS with < 0.1% sodium azide and 0.1% gelatin.

Blocking peptide available for competition studies, sc-85878 P, (100 μ g peptide in 0.5 ml PBS containing < 0.1% sodium azide and 0.2% BSA).

APPLICATIONS

RBP-L (G-17) is recommended for detection of RBP-L of mouse, rat and human origin by Western Blotting (starting dilution 1:200, dilution range 1:100-1:1000), immunoprecipitation [1-2 μ g per 100-500 μ g of total protein (1 ml of cell lysate)], immunofluorescence (starting dilution 1:50, dilution range 1:50-1:500) and solid phase ELISA (starting dilution 1:30, dilution range 1:30-1:3000).

RBP-L (G-17) is also recommended for detection of RBP-L in additional species, including equine, canine and bovine.

Suitable for use as control antibody for RBP-L siRNA (h): sc-76372, RBP-L siRNA (m): sc-152762, RBP-L shRNA Plasmid (h): sc-76372-SH, RBP-L shRNA Plasmid (m): sc-152762-SH, RBP-L shRNA (h) Lentiviral Particles: sc-76372-V and RBP-L shRNA (m) Lentiviral Particles: sc-152762-V.

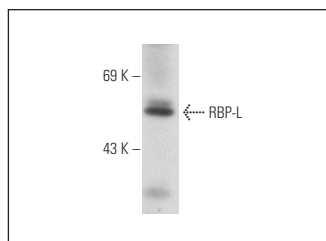
Molecular Weight of RBP-L: 56 kDa.

Positive Controls: WEHI-231 nuclear extract.

RECOMMENDED SECONDARY REAGENTS

To ensure optimal results, the following support (secondary) reagents are recommended: 1) Western Blotting: use donkey anti-goat IgG-HRP: sc-2020 (dilution range: 1:2000-1:100,000) or Cruz Marker™ compatible donkey anti-goat IgG-HRP: sc-2033 (dilution range: 1:2000-1:5000), Cruz Marker™ Molecular Weight Standards: sc-2035, TBS Blotto A Blocking Reagent: sc-2333 and Western Blotting Luminol Reagent: sc-2048. 2) Immunoprecipitation: use Protein A/G PLUS-Agarose: sc-2003 (0.5 ml agarose/2.0 ml). 3) Immunofluorescence: use donkey anti-goat IgG-FITC: sc-2024 (dilution range: 1:100-1:400) or donkey anti-goat IgG-TR: sc-2783 (dilution range: 1:100-1:400) with UltraCruz™ Mounting Medium: sc-24941.

DATA



RBP-L (G-17): sc-85878. Western blot analysis of RBP-L expression in WEHI-231 nuclear extract.

STORAGE

Store at 4° C, **DO NOT FREEZE**. Stable for one year from the date of shipment. Non-hazardous. No MSDS required.

RESEARCH USE

For research use only, not for use in diagnostic procedures.