

p130 Cas/Sin (N-17): sc-859

BACKGROUND

A protein designated p130 Cas (for Crk-associated substrate), represents one of several known substrates for v-Crk encoded p47. p130 Cas (also designated breast cancer anti-estrogen resistance protein 1 or Cas scaffolding protein family member 1), exhibits a high level of tyrosine phosphorylation and is tightly associated with v-Crk, suggesting a role in v-Crk-mediated cell signaling. p130 Cas is a novel SH3-containing signaling molecule with a cluster of multiple putative SH2-binding motifs for v-Crk. Two p130 Cas related proteins, designated Sin (Src interacting or signal integrating protein, also designated Cas3 or HEFS) and Cas-L (human enhancer of filamentatin 1, HEF1 or Cas3), have also been identified. Sin contains SH2/SH3 domains and has been shown to activate Src. Cas-L contains an SH3 domain and has been shown to be a docking protein that serves as a substrate for phosphorylation by several oncogenic tyrosine kinases.

CHROMOSOMAL LOCATION

Genetic locus: BCAR1 (human) mapping to 16q23.1, EFS (human) mapping to 14q11.2; Bcar1 (mouse) mapping to 8 E1, Efs (mouse) mapping to 14 C3.

SOURCE

p130 Cas/Sin (N-17) is an affinity purified rabbit polyclonal antibody raised against a peptide mapping near the N-terminus of p130 Cas of rat origin.

PRODUCT

Each vial contains 200 µg IgG in 1.0 ml of PBS with < 0.1% sodium azide and 0.1% gelatin.

Blocking peptide available for competition studies, sc-859 P, (100 µg peptide in 0.5 ml PBS containing < 0.1% sodium azide and 0.2% BSA).

APPLICATIONS

p130 Cas/Sin (N-17) is recommended for detection of p130 Cas and Sin of mouse, rat and human origin by Western Blotting (starting dilution 1:200, dilution range 1:100-1:1000), immunoprecipitation [1-2 µg per 100-500 µg of total protein (1 ml of cell lysate)], immunofluorescence (starting dilution 1:50, dilution range 1:50-1:500) and solid phase ELISA (starting dilution 1:30, dilution range 1:30-1:3000).

p130 Cas/Sin (N-17) is also recommended for detection of p130 Cas and Sin in additional species, including equine, canine, bovine and avian.

Molecular Weight of p130 Cas: 130 kDa.

Molecular Weight of Sin: 70 kDa.

Positive Controls: Sin (m): 293T Lysate: sc-123554, Jurkat whole cell lysate: sc-2204 or 3611-RF whole cell lysate: sc-2215.

RESEARCH USE

For research use only, not for use in diagnostic procedures.

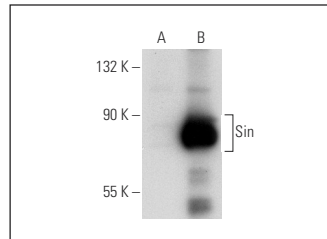
PROTOCOLS

See our web site at www.scbt.com or our catalog for detailed protocols and support products.

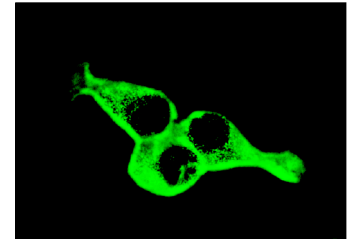
STORAGE

Store at 4° C, ****DO NOT FREEZE****. Stable for one year from the date of shipment. Non-hazardous. No MSDS required.

DATA



p130 Cas (N-17): sc-859. Western blot analysis of Sin expression in non-transfected: sc-117752 (A) and mouse Sin transfected: sc-123554 (B) 293T whole cell lysates.



p130 Cas/Sin (N-17): sc-859. Immunofluorescence staining of methanol-fixed 3611-RF cells showing cytoplasmic staining.

SELECT PRODUCT CITATIONS

- Liu, F., et al. 1998. Transformation suppression by protein tyrosine phosphatase 1B requires a functional SH3 ligand. *Mol. Cell. Biol.* 18: 250-259.
- Xing, L., et al. 2000. c-Src signaling induced by the adapters Sin and Cas is mediated by Rap1 GTPase. *Mol. Cell. Biol.* 20: 7363-7377.
- Prasad, N., et al. 2001. SH2-containing inositol 5'-phosphatase SHIP-2 associates with the p130 Cas adapter protein and regulates cellular adhesion and spreading. *Mol. Cell. Biol.* 21: 1416-1428.
- Suzuki, T., et al. 2002. MICAL, a novel Cas_L interacting molecule, associates with vimentin. *J. Biol. Chem.* 277: 14933.
- Dail, M., et al. 2004. SHEP1 function in cell migration is impaired by a single amino acid mutation that disrupts association with the scaffolding protein Cas but not with Ras GTPases. *J. Biol. Chem.* 279: 41892-41902.
- Schmitmeier, S., et al. 2005. Potent mimicry of fibronectin-induced intracellular signaling in glioma cells by the homodimeric snake venom disintegrin contortrostatin. *Neurosurgery* 57: 141-153.
- Yamada, M., et al. 2008. The tetraspanin CD151 regulates cell morphology and intracellular signaling on laminin-511. *FEBS J.* 275: 3335-3351.
- Ma, T., et al. 2010. Regulation of sealing ring formation by L-plastin and cortactin in osteoclasts. *J. Biol. Chem.* 285: 29911-29924.
- Siu, M.K., et al. 2011. The β₁-integrin-p-FAK-p130Cas-DOCK180-RhoA-vinculin is a novel regulatory protein complex at the apical ectoplasmic specialization in adult rat testes. *Spermatogenesis* 1: 73-86.


 MONOS
Satisfation
Guaranteed

Try **p130 Cas (35B.1A4): sc-20029** or **Sin (13): sc-136329**, our highly recommended monoclonal alternatives to p130 Cas/Sin (N-17).