

# SLC2A4RG (S-17): sc-85921

## BACKGROUND

SLC2A4RG (SLC2A4 regulator), also known as Huntington disease gene regulatory region-binding protein 1 and Glut4 enhancer factor, is a 387 amino acid transcription factor that is involved in Glut4 and HD gene transactivation. In cooperation with MEF-2, SLC2A4RG binds to domain I of the Glut4 promoter to regulate transcription of Glut4. Interestingly, after a single bout of exercise, there is an increase in DNA binding activities of both SLC2A4RG and MEF-2, which leads to an increase in transcription of Glut4. This is significant because overexpression of Glut4 in skeletal muscle has shown to improve glucose homeostasis and enhance Insulin action. Also, by recognizing the 5'-GCCGGCG-3' DNA sequence motif of the Huntington's disease (HD) promoter, SLC2A4RG regulates transcription of the HD gene. Ubiquitously expressed with highest expression in skeletal muscle, liver, kidney, heart and pancreas, SLC2A4RG shuttles between the cytoplasm and nucleus and contains a C<sub>2</sub>H<sub>2</sub>-type zinc finger that is involved in DNA binding. There are two isoforms of SLC2A4RG that are produced as a result of alternative splicing.

## REFERENCES

1. Thai, M.V., et al. 1998. Myocyte enhancer factor 2 (MEF2)-binding site is required for Glut4 gene expression in transgenic mice. Regulation of MEF2 DNA binding activity in Insulin-deficient diabetes. *J. Biol. Chem.* 273: 14285-14292.
2. Oshel, K.M., et al. 2000. Identification of a 30-base pair regulatory element and novel DNA binding protein that regulates the human Glut4 promoter in transgenic mice. *J. Biol. Chem.* 275: 23666-23673.
3. Online Mendelian Inheritance in Man, OMIM™. 2002. Johns Hopkins University, Baltimore, MD. MIM Number: 609493. World Wide Web URL: <http://www.ncbi.nlm.nih.gov/omim/>
4. Knight, J.B., et al. 2003. Regulation of the human GLUT4 gene promoter: interaction between a transcriptional activator and myocyte enhancer factor 2A. *Proc. Natl. Acad. Sci. USA* 100: 14725-14730.

## CHROMOSOMAL LOCATION

Genetic locus: SLC2A4RG (human) mapping to 20q13.33.

## SOURCE

SLC2A4RG (S-17) is an affinity purified rabbit polyclonal antibody raised against a peptide mapping within an internal region of SLC2A4RG of human origin.

## PRODUCT

Each vial contains 100 µg IgG in 1.0 ml of PBS with < 0.1% sodium azide and 0.1% gelatin.

Blocking peptide available for competition studies, sc-85921 P, (100 µg peptide in 0.5 ml PBS containing < 0.1% sodium azide and 0.2% BSA).

Available as TransCruz reagent for Gel Supershift and ChIP applications, sc-85921 X, 100 µg/0.1 ml.

## APPLICATIONS

SLC2A4RG (S-17) is recommended for detection of SLC2A4RG of human origin by Western Blotting (starting dilution 1:200, dilution range 1:100-1:1000), immunofluorescence (starting dilution 1:50, dilution range 1:50-1:500), immunohistochemistry (including paraffin-embedded sections) (starting dilution 1:50, dilution range 1:50-1:500) and solid phase ELISA (starting dilution 1:30, dilution range 1:30-1:3000).

Suitable for use as control antibody for SLC2A4RG siRNA (h): sc-76506, SLC2A4RG shRNA Plasmid (h): sc-76506-SH and SLC2A4RG shRNA (h) Lentiviral Particles: sc-76506-V.

SLC2A4RG (S-17) X TransCruz antibody is recommended for Gel Supershift and ChIP applications.

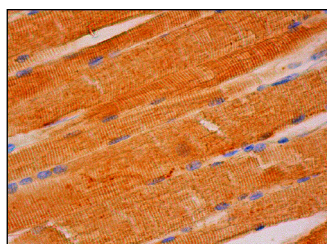
Molecular Weight of SLC2A4RG isoforms: 41/30 kDa.

Positive Controls: Jurkat whole cell lysate: sc-2204 or HeLa whole cell lysate: sc-2200.

## RECOMMENDED SECONDARY REAGENTS

To ensure optimal results, the following support (secondary) reagents are recommended: 1) Western Blotting: use goat anti-rabbit IgG-HRP: sc-2004 (dilution range: 1:2000-1:100,000) or Cruz Marker™ compatible goat anti-rabbit IgG-HRP: sc-2030 (dilution range: 1:2000-1:5000), Cruz Marker™ Molecular Weight Standards: sc-2035, TBS Blotto A Blocking Reagent: sc-2333 and Western Blotting Luminol Reagent: sc-2048. 2) Immunofluorescence: use goat anti-rabbit IgG-FITC: sc-2012 (dilution range: 1:100-1:400) or goat anti-rabbit IgG-TR: sc-2780 (dilution range: 1:100-1:400) with UltraCruz™ Mounting Medium: sc-24941. 3) Immunohistochemistry: use ImmunoCruz™: sc-2051 or ABC: sc-2018 rabbit IgG Staining Systems.

## DATA



SLC2A4RG (S-17): sc-85921. Immunoperoxidase staining of formalin fixed, paraffin-embedded human skeletal muscle tissue showing cytoplasmic staining of myocytes.

## STORAGE

Store at 4° C, \*\*DO NOT FREEZE\*\*. Stable for one year from the date of shipment. Non-hazardous. No MSDS required.

## RESEARCH USE

For research use only, not for use in diagnostic procedures.