

# TM9SF4 (S-20): sc-85963

## BACKGROUND

TM9SF4 (transmembrane 9 superfamily member 4), also known as KIAA0255, is a 642 amino acid multi-pass membrane protein that belongs to the nonapanin (TM9SF) family. TM9SF4 is post-translationally phosphorylated at tyrosine 312 and is encoded by a gene that maps to human chromosome 20. Comprising approximately 2% of the human genome, chromosome 20 contains nearly 63 million bases that encode over 600 genes, some of which are associated with Creutzfeldt-Jakob disease, amyotrophic lateral sclerosis, spinal muscular atrophy, ring chromosome 20 epilepsy syndrome and Alagille syndrome. Additionally, chromosome 20 contains a region with numerous genes which are thought to be important for seminal production and may be potential targets for male contraception.

## CHROMOSOMAL LOCATION

Genetic locus: TM9SF4 (human) mapping to 20q11.21; Tm9sf4 (mouse) mapping to 2 H1.

## SOURCE

TM9SF4 (S-20) is an affinity purified goat polyclonal antibody raised against a peptide mapping within an internal region of TM9SF4 of human origin.

## PRODUCT

Each vial contains 200 µg IgG in 1.0 ml of PBS with < 0.1% sodium azide and 0.1% gelatin.

Blocking peptide available for competition studies, sc-85963 P, (100 µg peptide in 0.5 ml PBS containing < 0.1% sodium azide and 0.2% BSA).

## STORAGE

Store at 4° C, **\*\*DO NOT FREEZE\*\***. Stable for one year from the date of shipment. Non-hazardous. No MSDS required.

## APPLICATIONS

TM9SF4 (S-20) is recommended for detection of TM9SF4 of mouse, rat and human origin by Western Blotting (starting dilution 1:200, dilution range 1:100-1:1000), immunoprecipitation [1-2 µg per 100-500 µg of total protein (1 ml of cell lysate)], immunofluorescence (starting dilution 1:50, dilution range 1:50-1:500) and solid phase ELISA (starting dilution 1:30, dilution range 1:30-1:3000); non cross-reactive with TM9SF2.

TM9SF4 (S-20) is also recommended for detection of TM9SF4 in additional species, including equine, canine, bovine and porcine.

Suitable for use as control antibody for TM9SF4 siRNA (h): sc-76677, TM9SF4 siRNA (m): sc-154313, TM9SF4 shRNA Plasmid (h): sc-76677-SH, TM9SF4 shRNA Plasmid (m): sc-154313-SH, TM9SF4 shRNA (h) Lentiviral Particles: sc-76677-V and TM9SF4 shRNA (m) Lentiviral Particles: sc-154313-V.

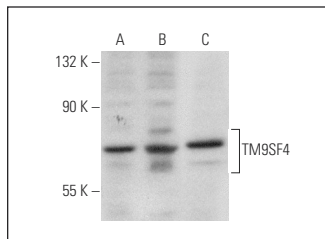
Molecular Weight of TM9SF4: 70 kDa.

Positive Controls: C32 whole cell lysate: sc-2205, AML-193 whole cell lysate or A-375 cell lysate: sc-3811.

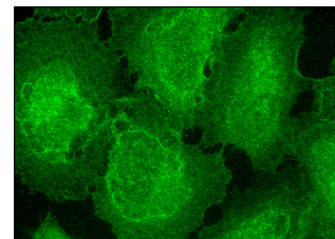
## RECOMMENDED SECONDARY REAGENTS

To ensure optimal results, the following support (secondary) reagents are recommended: 1) Western Blotting: use donkey anti-goat IgG-HRP: sc-2020 (dilution range: 1:2000-1:100,000) or Cruz Marker™ compatible donkey anti-goat IgG-HRP: sc-2033 (dilution range: 1:2000-1:5000), Cruz Marker™ Molecular Weight Standards: sc-2035, TBS Blotto A Blocking Reagent: sc-2333 and Western Blotting Luminol Reagent: sc-2048. 2) Immunoprecipitation: use Protein A/G PLUS-Agarose: sc-2003 (0.5 ml agarose/2.0 ml). 3) Immunofluorescence: use donkey anti-goat IgG-FITC: sc-2024 (dilution range: 1:100-1:400) or donkey anti-goat IgG-TR: sc-2783 (dilution range: 1:100-1:400) with UltraCruz™ Mounting Medium: sc-24941.

## DATA



TM9SF4 (S-20): sc-85963. Western blot analysis of TM9SF4 expression in C32 (A), A-375 (B) and AML-193 (C) whole cell lysates.



TM9SF4 (S-20): sc-85963. Immunofluorescence staining of formalin-fixed HeLa cells showing membrane localization.

## RESEARCH USE

For research use only, not for use in diagnostic procedures.

## PROTOCOLS

See our web site at [www.scbt.com](http://www.scbt.com) or our catalog for detailed protocols and support products.


 MONOS  
Satisfaction  
Guaranteed

Try **TM9SF4 (A-3): sc-374473**, our highly recommended monoclonal alternative to TM9SF4 (S-20).