

# Cruz Tag 09™ (A-12): sc-8600

## BACKGROUND

Plasmid vectors are commonly used for the expression of hybrid fusion proteins, encoding a protein of interest fused to an epitope tag. Antibodies specific for such fusion protein tags are useful for monitoring expression of the protein of interest, both in cells and in Western blot analysis. Such epitope tags in common use include Myc, GST, His, HA and GFP. Santa Cruz Biotechnology introduces a novel series of epitope tags, called the CruzTags. The CruzTag epitope tags are encoded by the pCruz mammalian expression vectors, a group of unique and effective vectors suitable for the production of recombinant tagged fusion proteins. Each pCruz expression vector encodes a unique, 12 amino acid CruzTag epitope sequence. Anti-CruzTag antibodies are suitable for detection and immunoprecipitation of recombinant fusion proteins containing the respective CruzTag.

## SOURCE

Cruz Tag 09™ (A-12) is available as either goat (sc-8600) or rabbit (sc-8600-R) polyclonal affinity purified antibody raised against a peptide mapping to the CruzTag 09 peptide domain of pCruz 09 mammalian expression vector.

## PRODUCT

Each vial contains 200 µg IgG in 1.0 ml of PBS with < 0.1% sodium azide and 0.1% gelatin.

Blocking peptide available for competition studies, sc-8600 P, (100 µg peptide in 0.5 ml PBS containing < 0.1% sodium azide and 0.2% BSA).

Available as agarose conjugate for immunoprecipitation, sc-8600 AC, 500 µg/0.25 ml agarose in 1 ml.

## STORAGE

Store at 4° C, **\*\*DO NOT FREEZE\*\***. Stable for one year from the date of shipment. Non-hazardous. No MSDS required.

## RESEARCH USE

For research use only, not for use in diagnostic procedures.

## APPLICATIONS

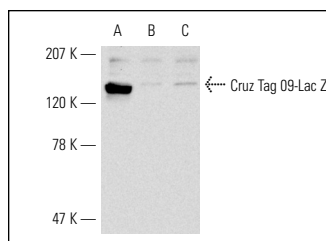
Cruz Tag 09™ (A-12) is recommended for detection of fusion proteins encoded by the pCruz 09 mammalian expression vector by Western Blotting (starting dilution 1:200, dilution range 1:100-1:1000), immunoprecipitation [1-2 µg per 100-500 µg of total protein (1 ml of cell lysate)], immunofluorescence (starting dilution 1:50, dilution range 1:50-1:500) and solid phase ELISA (starting dilution 1:30, dilution range 1:30-1:3000).

Positive Controls: Cruz Tag09-LacZ fusion proteins produced by cells transfected with pCruz 09™ expression vector (sc-5040).

## RECOMMENDED SECONDARY REAGENTS

To ensure optimal results, the following support (secondary) reagents are recommended: 1) Western Blotting: for goat primary antibody (sc-8600): use donkey anti-goat IgG-HRP: sc-2020 (range: 1:2000-1:100,000) or Cruz Marker™ compatible donkey anti-goat IgG-HRP: sc-2033 (range: 1:2000-1:5000), for rabbit primary antibody (sc-8600-R): use goat anti-rabbit IgG-HRP: sc-2004 (range: 1:2000-1:100,000) or Cruz Marker™ compatible goat anti-rabbit IgG-HRP: sc-2030 (range: 1:2000-1:5000); Cruz Marker™ Molecular Weight Standards: sc-2035, TBS Blotto A Blocking Reagent: sc-2333 and Western Blotting Luminol Reagent: sc-2048. 2) Immunoprecipitation: use Protein A/G PLUS-Agarose: sc-2003 (0.5 ml agarose/2.0 ml). 3) Immunofluorescence: for goat primary antibody (sc-8600): use donkey anti-goat IgG-FITC: sc-2024 (range: 1:100-1:400) or donkey anti-goat IgG-TR: sc-2783 (range: 1:100-1:400), for rabbit primary antibody (sc-8600-R): use goat anti-rabbit IgG-FITC: sc-2012 (range: 1:100-1:400) or goat anti-rabbit IgG-TR: sc-2780 (range: 1:100-1:400) with UltraCruz™ Mounting Medium: sc-24941.

## DATA



pCruz 09: sc-5040. Western blot analysis of CruzTag 09-Lac Z fusion protein expression in COS cells transfected with pCruz 09-Lac Z (A), pCruz 22-Lac Z (B) and untransfected COS cells (C). Blot probed with Cruz Tag 09 (A-12)-R: sc-8600-R.

## PROTOCOLS

See our web site at [www.scbt.com](http://www.scbt.com) or our catalog for detailed protocols and support products.