

ZSWIM1 (C-15): sc-86062

BACKGROUND

Zinc-finger proteins contain DNA-binding domains and have a wide variety of functions, most of which encompass some form of transcriptional activation or repression. ZSWIM1 (zinc finger SWIM domain-containing protein 1), also known as C20orf162, is a 485 amino acid protein that contains one SWIM-type zinc finger. The gene encoding ZSWIM1 maps to human chromosome 20. Comprising approximately 2% of the human genome, chromosome 20 contains nearly 63 million bases that encode over 600 genes, some of which are associated with Creutzfeldt-Jakob disease, amyotrophic lateral sclerosis, spinal muscular atrophy, ring chromosome 20 epilepsy syndrome and Alagille syndrome. Additionally, chromosome 20 contains a region with numerous genes which are thought important for seminal production and may be potential targets for male contraception.

REFERENCES

1. Prusiner, S.B. 1998. The prion diseases. *Brain Pathol.* 8: 499-513.
2. Collins, S., McLean, C.A. and Masters, C.L. 2001. Gerstmann-Sträussler-Scheinker syndrome, fatal familial insomnia and kuru: a review of these less common human transmissible spongiform encephalopathies. *J. Clin. Neurosci.* 8: 387-397.
3. Joó, J.G., Beke, A., Tóth-Pál, E., Hargitai, B., Szigeti, Z., Papp, C. and Papp, Z. 2006. Trisomy 20 mosaicism and nonmosaic trisomy 20: a report of 2 cases. *J. Reprod. Med.* 51: 209-212.
4. Ville, D., Kaminska, A., Bahi-Buisson, N., Biraben, A., Plouin, P., Telvi, L., Dulac, O. and Chiron, C. 2006. Early pattern of epilepsy in the ring chromosome 20 syndrome. *Epilepsia* 47: 543-549.
5. Kazantsev, A.G. 2007. Cellular pathways leading to neuronal dysfunction and degeneration. *Drug News Perspect.* 20: 501-509.
6. Lundwall, A. 2007. A locus on chromosome 20 encompassing genes that are highly expressed in the epididymis. *Asian J. Androl.* 9: 540-544.
7. O'Rand, M.G., Widgren, E.E., Wang, Z. and Richardson, R.T. 2007. Eppin: an epididymal protease inhibitor and a target for male contraception. *Soc. Reprod. Fertil. Suppl.* 63: 445-453.

CHROMOSOMAL LOCATION

Genetic locus: ZSWIM1 (human) mapping to 20q13.12; Zswim1 (mouse) mapping to 2 H3.

SOURCE

ZSWIM1 (C-15) is an affinity purified rabbit polyclonal antibody raised against a peptide mapping at the C-terminus of ZSWIM1 of human origin.

STORAGE

Store at 4° C, ****DO NOT FREEZE****. Stable for one year from the date of shipment. Non-hazardous. No MSDS required.

RESEARCH USE

For research use only, not for use in diagnostic procedures.

PRODUCT

Each vial contains 100 µg IgG in 1.0 ml of PBS with < 0.1% sodium azide and 0.1% gelatin.

Blocking peptide available for competition studies, sc-86062 P, (100 µg peptide in 0.5 ml PBS containing < 0.1% sodium azide and 0.2% BSA).

Available as TransCruz reagent for Gel Supershift and ChIP applications, sc-86062 X, 100 µg/0.1 ml.

APPLICATIONS

ZSWIM1 (C-15) is recommended for detection of ZSWIM1 of mouse, rat and human origin by Western Blotting (starting dilution 1:200, dilution range 1:100-1:1000), immunoprecipitation [1-2 µg per 100-500 µg of total protein (1 ml of cell lysate)], immunofluorescence (starting dilution 1:50, dilution range 1:50-1:500) and solid phase ELISA (starting dilution 1:30, dilution range 1:30-1:3000); non cross-reactive with ZSWIM3.

ZSWIM1 (C-15) is also recommended for detection of ZSWIM1 in additional species, including equine, canine, bovine, porcine and avian.

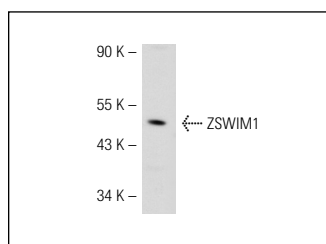
Suitable for use as control antibody for ZSWIM1 siRNA (h): sc-77017, ZSWIM1 siRNA (m): sc-155842, ZSWIM1 shRNA Plasmid (h): sc-77017-SH, ZSWIM1 shRNA Plasmid (m): sc-155842-SH, ZSWIM1 shRNA (h) Lentiviral Particles: sc-77017-V and ZSWIM1 shRNA (m) Lentiviral Particles: sc-155842-V.

ZSWIM1 (C-15) X TransCruz antibody is recommended for Gel Supershift and ChIP applications.

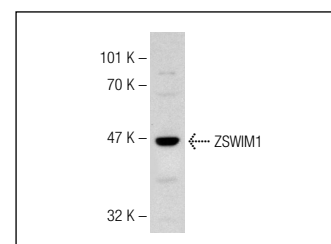
Molecular Weight of ZSWIM1: 55 kDa.

Positive Controls: MIA PaCa-2 cell lysate: sc-2285 or JAR cell lysate: sc-2276.

DATA



ZSWIM1 (C-15): sc-86062. Western blot analysis of ZSWIM1 expression in MIA PaCa-2 whole cell lysate.



ZSWIM1 (C-15): sc-86062. Western blot analysis of ZSWIM1 expression in JAR whole cell lysate.

PROTOCOLS

See our web site at www.scbt.com or our catalog for detailed protocols and support products.