

apoL-IV (P-18): sc-86072

BACKGROUND

The apolipoprotein L gene family maps to a region on chromosome 22 and encodes six highly homologous proteins designated apoL-I, apoL-II, apoL-III, apoL-IV, apoL-V and apoL-VI, all of which function as components of plasma lipoproteins. ApoL-IV (apolipoprotein L-IV), also known as APOL4, is a 351 amino acid protein that exists as multiple alternatively spliced isoforms, one of which is secreted. Expressed in spleen, placenta, spinal cord, uterus, testis and trachea, apoL-IV is thought to play a role in lipid exchange and transport throughout the body and may be involved in reverse cholesterol transport, specifically from peripheral cells to the liver. Overexpression of apoL-IV is associated with schizophrenia, suggesting that apoL-IV may play a role in the pathogenesis of neural disorders.

REFERENCES

1. Page, N.M., Butlin, D.J., Lomthaisong, K. and Lowry, P.J. 2001. The human apolipoprotein L gene cluster: identification, classification, and sites of distribution. *Genomics* 74: 71-78.
2. Duchateau, P.N., Pullinger, C.R., Cho, M.H., Eng, C. and Kane, J.P. 2001. Apolipoprotein L gene family: tissue-specific expression, splicing, promoter regions; discovery of a new gene. *J. Lipid Res.* 42: 620-630.
3. Monajemi, H., Fontijn, R.D., Pannekoek, H. and Horrevoets, A.J. 2002. The apolipoprotein L gene cluster has emerged recently in evolution and is expressed in human vascular tissue. *Genomics* 79: 539-546.
4. Mimmack, M.L., Ryan, M., Baba, H., Navarro-Ruiz, J., Iritani, S., Faull, R.L., McKenna, P.J., Jones, P.B., Arai, H., Starkey, M., Emson, P.C. and Bahn, S. 2002. Gene expression analysis in schizophrenia: reproducible up-regulation of several members of the apolipoprotein L family located in a high-susceptibility locus for schizophrenia on chromosome 22. *Proc. Natl. Acad. Sci. USA* 99: 4680-4685.
5. Online Mendelian Inheritance in Man, OMIM[™]. 2002. Johns Hopkins University, Baltimore, MD. MIM Number: 607254. World Wide Web URL: <http://www.ncbi.nlm.nih.gov/omim/>
6. McGhee, K.A., Morris, D.W., Schwaiger, S., Nangle, J.M., Donohoe, G., Clarke, S., Meagher, D., Quinn, J., Scully, P., Waddington, J.L., Gill, M. and Corvin, A. 2005. Investigation of the apolipoprotein-L (APOL) gene family and schizophrenia using a novel DNA pooling strategy for public database SNPs. *Schizophr. Res.* 76: 231-238.
7. Takahashi, S., Cui, Y.H., Han, Y.H., Fagerness, J.A., Galloway, B., Shen, Y.C., Kojima, T., Uchiyama, M., Faraone, S.V. and Tsuang, M.T. 2008. Association of SNPs and haplotypes in APOL1, 2 and 4 with schizophrenia. *Schizophr. Res.* 104: 153-164.

STORAGE

Store at 4° C, ****DO NOT FREEZE****. Stable for one year from the date of shipment. Non-hazardous. No MSDS required.

PROTOCOLS

See our web site at www.scbt.com or our catalog for detailed protocols and support products.

CHROMOSOMAL LOCATION

Genetic locus: APOL4 (human) mapping to 22q11.2.

SOURCE

apoL-IV (P-18) is an affinity purified goat polyclonal antibody raised against a peptide mapping within an internal region of apoL-IV of human origin.

PRODUCT

Each vial contains 200 µg IgG in 1.0 ml of PBS with < 0.1% sodium azide and 0.1% gelatin.

Blocking peptide available for competition studies, sc-86072 P, (100 µg peptide in 0.5 ml PBS containing < 0.1% sodium azide and 0.2% BSA).

APPLICATIONS

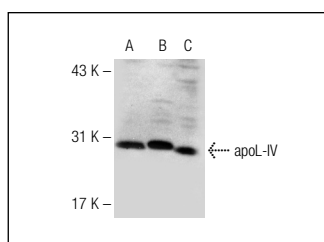
apoL-IV (P-18) is recommended for detection of apoL-IV of human origin by Western Blotting (starting dilution 1:200, dilution range 1:100-1:1000), immunoprecipitation [1-2 µg per 100-500 µg of total protein (1 ml of cell lysate)], immunofluorescence (starting dilution 1:50, dilution range 1:50-1:500) and solid phase ELISA (starting dilution 1:30, dilution range 1:30-1:3000); non cross-reactive with other apoL family members.

Suitable for use as control antibody for apoL-IV siRNA (h): sc-72520, apoL-IV shRNA Plasmid (h): sc-72520-SH and apoL-IV shRNA (h) Lentiviral Particles: sc-72520-V.

Molecular Weight of apoL-IV: 39 kDa.

Positive Controls: Hep G2 cell lysate: sc-2227, JAR cell lysate: sc-2276 or SK-BR-3 cell lysate: sc-2218.

DATA



apoL-IV (P-18): sc-86072. Western blot analysis of apoL-IV expression in JAR (A), Hep G2 (B) and SK-BR-3 (C) whole cell lysates.

RESEARCH USE

For research use only, not for use in diagnostic procedures.