

CECR5 (C-14): sc-86104

BACKGROUND

Adenosine deaminase is an enzyme that is present in most tissues and exists predominantly as a monomer, although in some tissues it is associated with adenosine deaminase-binding protein. Adenosine deaminase degrades extracellular adenosine, which is toxic for lymphocytes. A novel family of growth factors that share sequence similarity to adenosine deaminase has been identified. The cat eye syndrome critical region protein (CECR) family includes CECR1, CECR2, CECR3, CECR4, CECR5, CECR6, CECR7, CECR8 and CECR9. The genes encoding CECR proteins are candidates for Cat Eye Syndrome (CES), a developmental disorder associated with the duplication of a 2 Mb region of 22q11.1. CES is characterized by the combination of coloboma of the iris and anal atresia with fistula, downslanting palpebral fissures, preauricular tags and/or pits, frequent occurrence of heart and renal malformations, and normal or near-normal mental development. CECR family members are widely expressed. Specifically, CECR1 has the highest expression in adult heart, lung, lymphoblasts and placenta. CECR2 is also involved in neurulation and chromatin remodeling. Mutations in the CECR2 gene result in neural tube defects.

REFERENCES

- Daddona, P.E. and Kelly, W.N. 1980. Analysis of normal and mutant forms of human adenosine deaminase—a review. *Mol. Cell. Biochem.* 29: 91-101.
- Franco, R., Valenzuela, A., Lluís, C. and Blanco, J. 1998. Enzymatic and extraenzymatic role of ectoadenosine deaminase in lymphocytes. *Immunol. Rev.* 161: 27-42.
- Riazi, M.A., Brinkman-Mills, P., Nguyen, T., Pan, H., Phan, S., Ying, F., Roe, B.A., Tochigi, J., Shimizu, Y., Minoshima, S., Shimizu, N., Buchwald, M. and McDermid, H.E. 2000. The human homolog of insect-derived growth factor, CECR1, is a candidate gene for features of cat eye syndrome. *Genomics* 64: 277-285.
- Maier, S.A., Podemski, L., Graham, S.W., McDermid, H.E. and Locke, J. 2001. Characterization of the adenosine deaminase-related growth factor (ADGF) gene family in *Drosophila*. *Gene* 280: 27-36.
- Footz, T.K., Brinkman-Mills, P., Banting, G.S., Maier, S.A., Riazi, M.A., Bridgland, L., Hu, S., Birren, B., Minoshima, S., Shimizu, N., Pan, H., Nguyen, T., Fang, F., et al. 2001. Analysis of the cat eye syndrome critical region in humans and the region of conserved synteny in mice: a search for candidate genes at or near the human chromosome 22 pericentromere. *Genome Res.* 11: 1053-1070.
- Banting, G.S., Barak, O., Ames, T.M., Burnham, A.C., Kardel, M.D., Cooch, N.S., Davidson, C.E., Godbout, R., McDermid, H.E. and Shiekhattar, R. 2005. CECR2, a protein involved in neurulation, forms a novel chromatin remodeling complex with SNF2L. *Hum. Mol. Genet.* 14: 513-524.

CHROMOSOMAL LOCATION

Genetic locus: CECR5 (human) mapping to 22q11.1; Cecr5 (mouse) mapping to 6 F1.

RESEARCH USE

For research use only, not for use in diagnostic procedures.

SOURCE

CECR5 (C-14) is an affinity purified rabbit polyclonal antibody raised against a peptide mapping near the C-terminus of CECR5 of human origin.

PRODUCT

Each vial contains 100 µg IgG in 1.0 ml of PBS with < 0.1% sodium azide and 0.1% gelatin.

Blocking peptide available for competition studies, sc-86104 P, (100 µg peptide in 0.5 ml PBS containing < 0.1% sodium azide and 0.2% BSA).

APPLICATIONS

CECR5 (C-14) is recommended for detection of CECR5 of mouse, rat and human origin by Western Blotting (starting dilution 1:200, dilution range 1:100-1:1000), immunoprecipitation [1-2 µg per 100-500 µg of total protein (1 ml of cell lysate)], immunofluorescence (starting dilution 1:50, dilution range 1:50-1:500) and solid phase ELISA (starting dilution 1:30, dilution range 1:30-1:3000).

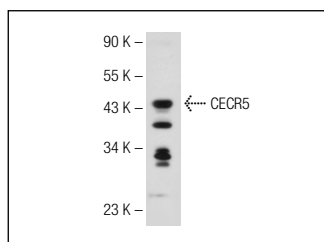
CECR5 (C-14) is also recommended for detection of CECR5 in additional species, including canine.

Suitable for use as control antibody for CECR5 siRNA (h): sc-72857, CECR5 siRNA (m): sc-142259, CECR5 shRNA Plasmid (h): sc-72857-SH, CECR5 shRNA Plasmid (m): sc-142259-SH, CECR5 shRNA (h) Lentiviral Particles: sc-72857-V and CECR5 shRNA (m) Lentiviral Particles: sc-142259-V.

Molecular Weight of CECR5: 46 kDa.

Positive Controls: C2C12 whole cell lysate.

DATA



CECR5 (C-14): sc-86104. Western blot analysis of CECR5 expression in C2C12 whole cell lysate.

STORAGE

Store at 4° C, ****DO NOT FREEZE****. Stable for one year from the date of shipment. Non-hazardous. No MSDS required.

PROTOCOLS

See our web site at www.scbt.com or our catalog for detailed protocols and support products.