

Nop25 (K-15): sc-86186

BACKGROUND

Nop25, also known as NOL12 (nucleolar protein 12) is a 213 amino acid protein that localizes to the nucleolus and is thought to bind to 28S rRNA, possibly playing a role in the processing of rRNA molecules and in the subsequent assembly and maturation of ribosomes. The gene encoding Nop25 maps to human chromosome 22, which houses over 500 genes and is the second smallest human chromosome. Mutations in several of the genes that map to chromosome 22 are involved in the development of Phelan-McDermid syndrome, neurofibromatosis type 2, autism and schizophrenia. Additionally, translocations between chromosomes 9 and 22 may lead to the formation of the Philadelphia chromosome and the subsequent production of the novel fusion protein BCR-Abl, a potent cell proliferation activator found in several types of leukemias.

REFERENCES

1. Gilbert, F. 1998. Disease genes and chromosomes: disease maps of the human genome. Chromosome 22. Genet. Test. 2: 89-97.
2. Schwab, S.G. and Wildenauer, D.B. 1999. Chromosome 22 workshop report. Am. J. Med. Genet. 88: 276-278.
3. Tsilchorozidou, T., Menko, F.H., Laloo, F., Kidd, A., De Silva, R., Thomas, H., Smith, P., Malcolmson, A., Dore, J., Madan, K., Brown, A., Yovos, J.G., Tsaligopoulos, M., Vogiatzis, N., Baser, M.E., Wallace, A.J. and Evans, D.G. 2004. Constitutional rearrangements of chromosome 22 as a cause of neurofibromatosis 2. J. Med. Genet. 41: 529-534.
4. Arinami, T. 2006. Analyses of the associations between the genes of 22q11 deletion syndrome and schizophrenia. J. Hum. Genet. 51: 1037-1045.
5. Paylor, R., Glaser, B., Mupo, A., Ataliotis, P., Spencer, C., Sobotka, A., Sparks, C., Choi, C.H., Oghalai, J., Curran, S., Murphy, K.C., Monks, S., Williams, N., O'Donovan, M.C., Owen, M.J., Scambler, P.J. and Lindsay, E. 2006. Tbx1 haploinsufficiency is linked to behavioral disorders in mice and humans: implications for 22q11 deletion syndrome. Proc. Natl. Acad. Sci. USA 103: 7729-7734.

CHROMOSOMAL LOCATION

Genetic locus: NOL12 (human) mapping to 22q13.1; Nol12 (mouse) mapping to 15 E1.

SOURCE

Nop25 (K-15) is an affinity purified rabbit polyclonal antibody raised against a peptide mapping within an internal region of Nop25 of human origin.

PRODUCT

Each vial contains 100 µg IgG in 1.0 ml of PBS with < 0.1% sodium azide and 0.1% gelatin.

Blocking peptide available for competition studies, ready P, (100 µg peptide in 0.5 ml PBS containing < 0.1% sodium azide and 0.2% BSA).

RESEARCH USE

For research use only, not for use in diagnostic procedures.

APPLICATIONS

Nop25 (K-15) is recommended for detection of Nop25 of mouse, rat and human origin by Western Blotting (starting dilution 1:200, dilution range 1:100-1:1000), immunoprecipitation [1-2 µg per 100-500 µg of total protein (1 ml of cell lysate)], immunofluorescence (starting dilution 1:50, dilution range 1:50-1:500) and solid phase ELISA (starting dilution 1:30, dilution range 1:30-1:3000).

Nop25 (K-15) is also recommended for detection of Nop25 in additional species, including equine, bovine and porcine.

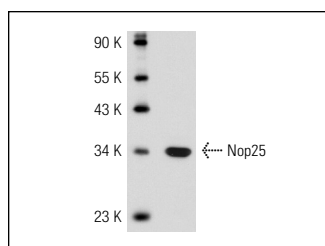
Suitable for use as control antibody for Nop25 siRNA (h): sc-75946, Nop25 siRNA (m): sc-150032, Nop25 shRNA Plasmid (h): sc-75946-SH, Nop25 shRNA Plasmid (m): sc-150032-SH, Nop25 shRNA (h) Lentiviral Particles: sc-75946-V and Nop25 shRNA (m) Lentiviral Particles: sc-150032-V.

Molecular Weight of Nop25: 32 kDa.

RECOMMENDED SECONDARY REAGENTS

To ensure optimal results, the following support (secondary) reagents are recommended: 1) Western Blotting: use goat anti-rabbit IgG-HRP: sc-2004 (dilution range: 1:2000-1:100,000) or Cruz Marker™ compatible goat anti-rabbit IgG-HRP: sc-2030 (dilution range: 1:2000-1:5000), Cruz Marker™ Molecular Weight Standards: sc-2035, TBS Blotto A Blocking Reagent: sc-2333 and Western Blotting Luminol Reagent: sc-2048. 2) Immunoprecipitation: use Protein A/G PLUS-Agarose: sc-2003 (0.5 ml agarose/2.0 ml). 3) Immunofluorescence: use goat anti-rabbit IgG-FITC: sc-2012 (dilution range: 1:100-1:400) or goat anti-rabbit IgG-TR: sc-2780 (dilution range: 1:100-1:400) with UltraCruz™ Mounting Medium: sc-24941.

DATA



Nop25 (K-15): sc-86186. Western blot analysis of Nop25 expression in HeLa nuclear extract.

STORAGE

Store at 4° C, **DO NOT FREEZE**. Stable for one year from the date of shipment. Non-hazardous. No MSDS required.


 MONOS
Satisfaction
Guaranteed

Try **Nop25 (E-2): sc-374257**, our highly recommended monoclonal alternative to Nop25 (K-15).