

# Sel-1L2 (G-16): sc-86218

## BACKGROUND

Sel-1L2 (suppressor of lin-12-like protein 2) is a 688 amino acid single-pass type I membrane protein that contains 11 Sel1-like repeats and belongs to the Sel-1 family. The gene encoding Sel-1L2 maps to human chromosome 20, which comprises approximately 2% of the human genome and contains nearly 63 million bases that encode over 600 genes, some of which are associated with Creutzfeldt-Jakob disease, amyotrophic lateral sclerosis, spinal muscular atrophy, ring chromosome 20 epilepsy syndrome and Alagille syndrome. Additionally, chromosome 20 contains a region with numerous genes which are thought important for seminal production and may be potential targets for male contraception.

## REFERENCES

1. Prusiner, S.B. 1998. The prion diseases. *Brain Pathol.* 8: 499-513.
2. Collins, S., McLean, C.A. and Masters, C.L. 2001. Gerstmann-Sträussler-Scheinker syndrome, fatal familial insomnia and kuru: a review of these less common human transmissible spongiform encephalopathies. *J. Clin. Neurosci.* 8: 387-397.
3. Masullo, C. and Macchi, G. 2001. Does PRNP gene control the clinical and pathological phenotype of human spongiform transmissible encephalopathies? *Clin. Neuropathol.* 20: 19-25.
4. Joó, J.G., Beke, A., Tóth-Pál, E., Hargitai, B., Szigeti, Z., Papp, C. and Papp, Z. 2006. Trisomy 20 mosaicism and nonmosaic trisomy 20: a report of 2 cases. *J. Reprod. Med.* 51: 209-212.
5. Ville, D., Kaminska, A., Bahi-Buisson, N., Biraben, A., Plouin, P., Telvi, L., Dulac, O. and Chiron, C. 2006. Early pattern of epilepsy in the ring chromosome 20 syndrome. *Epilepsia* 47: 543-549.
6. Elghezal, H., Hannachi, H., Mougou, S., Kammoun, H., Triki, C. and Saad, A. 2007. Ring chromosome 20 syndrome without deletions of the subtelomeric and CHRNA4-KCNQ2 genes loci. *Eur. J. Med. Genet.* 50: 441-445.
7. Kazantsev, A.G. 2007. Cellular pathways leading to neuronal dysfunction and degeneration. *Drug News Perspect.* 20: 501-509.
8. Lundwall, A. 2007. A locus on chromosome 20 encompassing genes that are highly expressed in the epididymis. *Asian J. Androl.* 9: 540-544.
9. O'Rand, M.G., Widgren, E.E., Wang, Z. and Richardson, R.T. 2007. Eppin: an epididymal protease inhibitor and a target for male contraception. *Soc. Reprod. Fertil. Suppl.* 63: 445-453.

## CHROMOSOMAL LOCATION

Genetic locus: SEL1L2 (human) mapping to 20p12.1; Sel1L2 (mouse) mapping to 2 F3.

## SOURCE

Sel-1L2 (G-16) is an affinity purified goat polyclonal antibody raised against a peptide mapping within an extracellular domain of Sel-1L2 of human origin.

## PRODUCT

Each vial contains 200 µg IgG in 1.0 ml of PBS with < 0.1% sodium azide and 0.1% gelatin.

Blocking peptide available for competition studies, sc-86218 P, (100 µg peptide in 0.5 ml PBS containing < 0.1% sodium azide and 0.2% BSA).

## APPLICATIONS

Sel-1L2 (G-16) is recommended for detection of Sel-1L2 of mouse, rat and human origin by Western Blotting (starting dilution 1:200, dilution range 1:100-1:1000), immunoprecipitation [1-2 µg per 100-500 µg of total protein (1 ml of cell lysate)], immunofluorescence (starting dilution 1:50, dilution range 1:50-1:500) and solid phase ELISA (starting dilution 1:30, dilution range 1:30-1:3000).

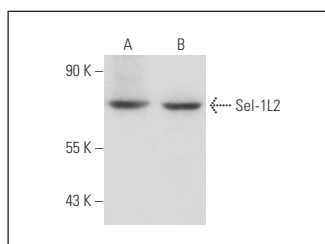
Sel-1L2 (G-16) is also recommended for detection of Sel-1L2 in additional species, including equine, canine, bovine and porcine.

Suitable for use as control antibody for Sel-1L2 siRNA (h): sc-76467, Sel-1L2 siRNA (m): sc-153323, Sel-1L2 shRNA Plasmid (h): sc-76467-SH, Sel-1L2 shRNA Plasmid (m): sc-153323-SH, Sel-1L2 shRNA (h) Lentiviral Particles: sc-76467-V and Sel-1L2 shRNA (m) Lentiviral Particles: sc-153323-V.

Molecular Weight of Sel-1L2: 78 kDa.

Positive Controls: mouse testis extract: sc-2405 or SK-N-MC cell lysate: sc-2237.

## DATA



Sel-1L2 (G-16): sc-86218. Western blot analysis of Sel-1L2 expression in mouse testis tissue extract (A) and SK-N-MC (B) whole cell lysates.

## STORAGE

Store at 4° C, **\*\*DO NOT FREEZE\*\***. Stable for one year from the date of shipment. Non-hazardous. No MSDS required.

## RESEARCH USE

For research use only, not for use in diagnostic procedures.

## PROTOCOLS

See our web site at [www.scbt.com](http://www.scbt.com) or our catalog for detailed protocols and support products.