

PRR14L (K-16): sc-86332

BACKGROUND

Proline-rich proteins are often involved in protein-protein interactions and typically act as ligands for SH3, WW and EVH1 domains. PRR14L (proline rich 14-like), also known as C22orf30, is a 2,151 amino acid protein that is conserved in chimpanzee, Rhesus monkey, canine, bovine, mouse and rat. Existing as four alternatively spliced isoforms, PRR14L is encoded by a gene located on human chromosome 22q12.2. Chromosome 22 contains over 500 genes and about 49 million bases. Being the second smallest human chromosome, 22 contains a surprising variety of interesting genes. Phelan-McDermid syndrome, neurofibromatosis type 2 and autism are associated with chromosome 22. A schizophrenia susceptibility locus has been identified on chromosome 22 and studies show that 22q11 deletion symptoms include a high incidence of schizophrenia. Translocations between chromosomes 9 and 22 may lead to the formation of the Philadelphia chromosome and the subsequent production of the novel fusion protein, Bcr-Abl, a potent cell proliferation activator found in several types of leukemia.

REFERENCES

- Gilbert, F. 1998. Disease genes and chromosomes: disease maps of the human genome. *Chromosome 22. Genet. Test.* 2: 89-97.
- Schwab, S.G. and Wildenauer, D.B. 1999. Chromosome 22 workshop report. *Am. J. Med. Genet.* 88: 276-278.
- Tsilchorozidou, T., Menko, F.H., Laloo, F., Kidd, A., De Silva, R., Thomas, H., Smith, P., Malcolmson, A., Dore, J., Madan, K., Brown, A., Yovos, J.G., Tsaligopoulos, M., Vogiatzis, N., Baser, M.E., Wallace, A.J. and Evans, D.G. 2004. Constitutional rearrangements of chromosome 22 as a cause of neurofibromatosis 2. *J. Med. Genet.* 41: 529-534.
- Arinami, T. 2006. Analyses of the associations between the genes of 22q11 deletion syndrome and schizophrenia. *J. Hum. Genet.* 51: 1037-1045.
- Paylor, R., Glaser, B., Mupo, A., Ataliotis, P., Spencer, C., Sobotka, A., Sparks, C., Choi, C.H., Oghalai, J., Curran, S., Murphy, K.C., Monks, S., Williams, N., O'Donovan, M.C., Owen, M.J., Scambler, P.J. and Lindsay, E. 2006. TBX1 haploinsufficiency is linked to behavioral disorders in mice and humans: implications for 22q11 deletion syndrome. *Proc. Natl. Acad. Sci. USA* 103: 7729-7734.
- Zheng, X., Güller, S., Beissert, T., Puccetti, E. and Ruthardt, M. 2006. Bcr and its mutants, the reciprocal t(9;22)-associated Abl/Bcr fusion proteins, differentially regulate the cytoskeleton and cell motility. *BMC Cancer* 6: 262.
- Ahronowitz, I., Xin, W., Kiely, R., Sims, K., MacCollin, M. and Nunes, F.P. 2007. Mutational spectrum of the NF2 gene: a meta-analysis of 12 years of research and diagnostic laboratory findings. *Hum. Mutat.* 28: 1-12.
- Hay, B.N. 2007. Deletion 22q11: spectrum of associated disorders. *Semin. Pediatr. Neurol.* 14: 136-139.

CHROMOSOMAL LOCATION

Genetic locus: PRR14L (human) mapping to 22q12.2.

RESEARCH USE

For research use only, not for use in diagnostic procedures.

SOURCE

PRR14L (K-16) is an affinity purified rabbit polyclonal antibody raised against a peptide mapping within an internal region of PRR14L of human origin.

PRODUCT

Each vial contains 100 µg IgG in 1.0 ml of PBS with < 0.1% sodium azide and 0.1% gelatin.

Blocking peptide available for competition studies, sc-86332 P, (100 µg peptide in 0.5 ml PBS containing < 0.1% sodium azide and 0.2% BSA).

APPLICATIONS

PRR14L (K-16) is recommended for detection of PRR14L of human origin by Western Blotting (starting dilution 1:200, dilution range 1:100-1:1000), immunoprecipitation [1-2 µg per 100-500 µg of total protein (1 ml of cell lysate)], immunofluorescence (starting dilution 1:50, dilution range 1:50-1:500) and solid phase ELISA (starting dilution 1:30, dilution range 1:30-1:3000).

Suitable for use as control antibody for PRR14L siRNA (h): sc-72760, PRR14L shRNA Plasmid (h): sc-72760-SH and PRR14L shRNA (h) Lentiviral Particles: sc-72760-V.

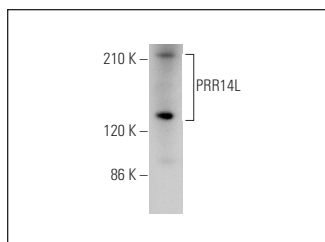
Molecular Weight of PRR14L isoform 1/2/3/4: 237/220/135/237 kDa.

Positively Control: human cerebral cortex tissue extract.

RECOMMENDED SECONDARY REAGENTS

To ensure optimal results, the following support (secondary) reagents are recommended: 1) Western Blotting: use goat anti-rabbit IgG-HRP: sc-2004 (dilution range: 1:2000-1:100,000) or Cruz Marker™ compatible goat anti-rabbit IgG-HRP: sc-2030 (dilution range: 1:2000-1:5000), Cruz Marker™ Molecular Weight Standards: sc-2035, TBS Blotto A Blocking Reagent: sc-2333 and Western Blotting Luminol Reagent: sc-2048. 2) Immunofluorescence: use goat anti-rabbit IgG-FITC: sc-2012 (dilution range: 1:100-1:400) or goat anti-rabbit IgG-TR: sc-2780 (dilution range: 1:100-1:400) with UltraCruz™ Mounting Medium: sc-24941.

DATA



PRR14L (K-16): sc-86332. Western blot analysis of PRR14L expression in human cerebral cortex tissue extract.

STORAGE

Store at 4° C, **DO NOT FREEZE**. Stable for one year from the date of shipment. Non-hazardous. No MSDS required.