

# Chibby (S-13): sc-86379

## BACKGROUND

Chibby, also known as cytosolic leucine-rich protein and PIGEA-14, is a 126 amino acid highly conserved protein that inhibits  $\beta$ -catenin-mediated transcriptional activation by competing with LEF-1 to bind  $\beta$ -catenin. Chibby may also play a role in the regulation of the intracellular location of Polycystin-2 and other intracellular proteins. Acting as a homodimer, Chibby is subcellularly localized to the nucleus and Golgi apparatus within the *trans*-Golgi network. Interaction with 14-3-3 results in the sequestration of Chibby to the cytoplasm and formation of a stable complex with  $\beta$ -catenin, thereby facilitating nuclear export of  $\beta$ -catenin. Though widely expressed, Chibby is found at highest levels in skeletal muscle, heart, placenta and kidney. Downregulation of Chibby is observed in thyroid and metastatic uterine tumors, suggesting that the gene encoding Chibby may function as a tumor suppressor.

## REFERENCES

1. Takemaru, K., Yamaguchi, S., Lee, Y.S., Zhang, Y., Carthew, R.W. and Moon, R.T. 2003. Chibby, a nuclear  $\beta$ -catenin-associated antagonist of the Wnt/Wingless pathway. *Nature* 422: 905-909.
2. Online Mendelian Inheritance in Man, OMIM™. 2003. Johns Hopkins University, Baltimore, MD. MIM Number: 607757. World Wide Web URL: <http://www.ncbi.nlm.nih.gov/omim/>
3. Gad, S., Teboul, D., Lièvre, A., Goasguen, N., Berger, A., Beaune, P. and Laurent-Puig, P. 2004. Is the gene encoding Chibby implicated as a tumour suppressor in colorectal cancer? *BMC Cancer* 4: 31.
4. Hidaka, S., Könecke, V., Osten, L. and Witzgall, R. 2004. PIGEA-14, a novel coiled-coil protein affecting the intracellular distribution of Polycystin-2. *J. Biol. Chem.* 279: 35009-35016.
5. Jung, Y., Bang, S., Choi, K., Kim, E., Kim, Y., Kim, J., Park, J., Koo, H., Moon, R.T., Song, K. and Lee, I. 2006. TC1 (C8orf4) enhances the Wnt/ $\beta$ -catenin pathway by relieving antagonistic activity of Chibby. *Cancer Res.* 66: 723-728.

## CHROMOSOMAL LOCATION

Genetic locus: CBY1 (human) mapping to 22q13.1; Cby1 (mouse) mapping to 15 E1.

## SOURCE

Chibby (S-13) is an affinity purified rabbit polyclonal antibody raised against a peptide mapping within an internal region of Chibby of human origin.

## PRODUCT

Each vial contains 100  $\mu$ g IgG in 1.0 ml of PBS with < 0.1% sodium azide and 0.1% gelatin.

Blocking peptide available for competition studies, sc-86379 P, (100  $\mu$ g peptide in 0.5 ml PBS containing < 0.1% sodium azide and 0.2% BSA).

## STORAGE

Store at 4° C, **\*\*DO NOT FREEZE\*\***. Stable for one year from the date of shipment. Non-hazardous. No MSDS required.

## APPLICATIONS

Chibby (S-13) is recommended for detection of Chibby of mouse, rat and human origin by Western Blotting (starting dilution 1:200, dilution range 1:100-1:1000), immunoprecipitation [1-2  $\mu$ g per 100-500  $\mu$ g of total protein (1 ml of cell lysate)], immunofluorescence (starting dilution 1:50, dilution range 1:50-1:500) and solid phase ELISA (starting dilution 1:30, dilution range 1:30-1:3000).

Suitable for use as control antibody for Chibby siRNA (h): sc-72890, Chibby siRNA (m): sc-142327, Chibby shRNA Plasmid (h): sc-72890-SH, Chibby shRNA Plasmid (m): sc-142327-SH, Chibby shRNA (h) Lentiviral Particles: sc-72890-V and Chibby shRNA (m) Lentiviral Particles: sc-142327-V.

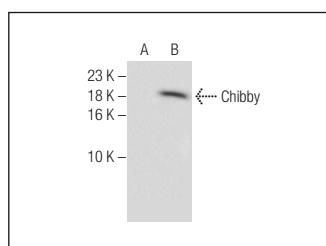
Molecular Weight of Chibby: 14 kDa.

Positive Controls: Chibby (h): 293T Lysate: sc-369175 or HeLa nuclear extract: sc-2120.

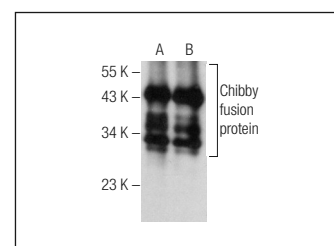
## RECOMMENDED SECONDARY REAGENTS

To ensure optimal results, the following support (secondary) reagents are recommended: 1) Western Blotting: use goat anti-rabbit IgG-HRP: sc-2004 (dilution range: 1:2000-1:100,000) or Cruz Marker™ compatible goat anti-rabbit IgG-HRP: sc-2030 (dilution range: 1:2000-1:5000), Cruz Marker™ Molecular Weight Standards: sc-2035, TBS Blotto A Blocking Reagent: sc-2333 and Western Blotting Luminol Reagent: sc-2048. 2) Immunoprecipitation: use Protein A/G PLUS-Agarose: sc-2003 (0.5 ml agarose/2.0 ml). 3) Immunofluorescence: use goat anti-rabbit IgG-FITC: sc-2012 (dilution range: 1:100-1:400) or goat anti-rabbit IgG-TR: sc-2780 (dilution range: 1:100-1:400) with UltraCruz™ Mounting Medium: sc-24941.

## DATA



Chibby (S-13): sc-86379. Western blot analysis of Chibby expression in non-transfected: sc-117752 (A) and human Chibby transfected: sc-369175 (B) 293T whole cell lysates.



Chibby (S-13): sc-86379. Western blot analysis of mouse (A) and human (B) recombinant Chibby fusion proteins.

## RESEARCH USE

For research use only, not for use in diagnostic procedures.

**MONOS**  
Satisfaction  
Guaranteed

Try **Chibby (C-10): sc-393295** or **Chibby (G-4): sc-393327**, our highly recommended monoclonal alternatives to Chibby (S-13).