

# PPIL2 (E-14): sc-86396

## BACKGROUND

Cyclophilins are conserved, ubiquitous and abundant cytosolic peptidylprolyl *cis-trans* isomerases that accelerate the isomerization of XaaPro peptide bonds and the refolding of proteins. PPIL2 (cyclophilin-60), also known as PPIL2 (peptidylprolyl isomerase (cyclophilin)-like 2), CYC4 or PPIase, is a 520 amino acid nuclear protein that belongs to the PPIL2 subfamily of the cyclophilin-type PPIase family. As a peptidylprolyl isomerase, PPIL2 accelerates protein folding, specifically the *cis-trans* isomerization of oligopeptide proline imidic peptide bonds. Existing as two alternatively spliced isoforms, PPIL2 is highly expressed in testis, pancreas and placenta, along with many melanomas and lymphomas, and is expressed at lower levels in spleen, kidney, prostate, small intestine, colon, heart, placenta, liver and lung. The gene encoding PPIL2 maps to human chromosome 22q11.21.

## CHROMOSOMAL LOCATION

Genetic locus: PPIL2 (human) mapping to 22q11.21; Ppil2 (mouse) mapping to 16 A3.

## SOURCE

PPIL2 (E-14) is an affinity purified goat polyclonal antibody raised against a peptide mapping within an internal region of PPIL2 of human origin.

## PRODUCT

Each vial contains 200 µg IgG in 1.0 ml of PBS with < 0.1% sodium azide and 0.1% gelatin.

Blocking peptide available for competition studies, sc-86396 P, (100 µg peptide in 0.5 ml PBS containing < 0.1% sodium azide and 0.2% BSA).

## STORAGE

Store at 4° C, **\*\*DO NOT FREEZE\*\***. Stable for one year from the date of shipment. Non-hazardous. No MSDS required.

## APPLICATIONS

PPIL2 (E-14) is recommended for detection of PPIL2 of mouse, rat and human origin by Western Blotting (starting dilution 1:200, dilution range 1:100-1:1000), immunoprecipitation [1-2 µg per 100-500 µg of total protein (1 ml of cell lysate)], immunofluorescence (starting dilution 1:50, dilution range 1:50-1:500) and solid phase ELISA (starting dilution 1:30, dilution range 1:30-1:3000); non cross-reactive with family member CyPB.

PPIL2 (E-14) is also recommended for detection of PPIL2 in additional species, including equine, canine, bovine, porcine and avian.

Suitable for use as control antibody for PPIL2 siRNA (h): sc-77077, PPIL2 siRNA (m): sc-142740, PPIL2 shRNA Plasmid (h): sc-77077-SH, PPIL2 shRNA Plasmid (m): sc-142740-SH, PPIL2 shRNA (h) Lentiviral Particles: sc-77077-V and PPIL2 shRNA (m) Lentiviral Particles: sc-142740-V.

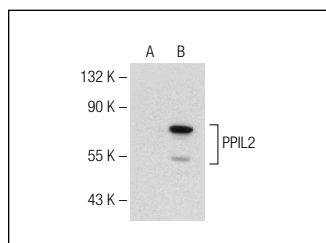
Molecular Weight of Cyp60: 59 kDa.

Positive Controls: PPIL2 (h4): 293T Lysate: sc-175188 or K-562 nuclear extract: sc-2130.

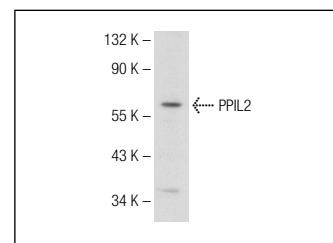
## RECOMMENDED SECONDARY REAGENTS

To ensure optimal results, the following support (secondary) reagents are recommended: 1) Western Blotting: use donkey anti-goat IgG-HRP: sc-2020 (dilution range: 1:2000-1:100,000) or Cruz Marker™ compatible donkey anti-goat IgG-HRP: sc-2033 (dilution range: 1:2000-1:5000), Cruz Marker™ Molecular Weight Standards: sc-2035, TBS Blotto A Blocking Reagent: sc-2333 and Western Blotting Luminol Reagent: sc-2048. 2) Immunoprecipitation: use Protein A/G PLUS-Agarose: sc-2003 (0.5 ml agarose/2.0 ml). 3) Immunofluorescence: use donkey anti-goat IgG-FITC: sc-2024 (dilution range: 1:100-1:400) or donkey anti-goat IgG-TR: sc-2783 (dilution range: 1:100-1:400) with UltraCruz™ Mounting Medium: sc-24941.

## DATA



PPIL2 (E-14): sc-86396. Western blot analysis of PPIL2 expression in non-transfected: sc-117752 (A) and human PPIL2 transfected: sc-175188 (B) 293T whole cell lysates.



PPIL2 (E-14): sc-86396. Western blot analysis of PPIL2 expression in K-562 nuclear extract.

## RESEARCH USE

For research use only, not for use in diagnostic procedures.

## PROTOCOLS

See our web site at [www.scbt.com](http://www.scbt.com) or our catalog for detailed protocols and support products.



Try **PPIL2 (H-2): sc-398201** or **PPIL2 (A-9): sc-514512**, our highly recommended monoclonal alternatives to PPIL2 (E-14).