

# DGCR14 (N-12): sc-86413

## BACKGROUND

DGCR14 (DiGeorge syndrome critical region 14, ES2 protein) is a 476 amino acid nuclear protein that belongs to the DGCR14 family. DGCR14 is believed to play a part in the etiology of the velocardiofacial/DiGeorge syndrome (VCF/ DGS), a developmental disorder characterized by structural and functional palate anomalies, conotruncal cardiac malformations, immunodeficiency, hypocalcemia and typical facial anomalies. Most cases result from a deletion of chromosome 22q11.21 (DiGeorge syndrome chromosome region, or DGCR). This protein localizes to the nucleus and co-purifies with C complex spliceosomes.

## REFERENCES

- Rizzu, P., Lindsay, E.A., Taylor, C., O'Donnell, H., Levy, A., Scambler, P. and Baldini, A. 1996. Cloning and comparative mapping of a gene from the commonly deleted region of DiGeorge and Velocardiofacial syndromes conserved in *C. elegans*. *Mamm. Genome* 7: 639-643.
- Gong, W., Emanuel, B.S., Galili, N., Kim, D.H., Roe, B., Driscoll, D.A. and Budarf, M.L. 1997. Structural and mutational analysis of a conserved gene (DGS1) from the minimal DiGeorge syndrome critical region. *Hum. Mol. Genet.* 6: 267-276.
- Chieffo, C., Garvey, N., Gong, W., Roe, B., Zhang, G., Silver, L., Emanuel, B.S. and Budarf, M.L. 1997. Isolation and characterization of a gene from the DiGeorge chromosomal region homologous to the mouse *Tbx1* gene. *Genomics* 43: 267-277.
- Lindsay, E.A., Harvey, E.L., Scambler, P.J. and Baldini, A. 1998. ES2, a gene deleted in DiGeorge syndrome, encodes a nuclear protein and is expressed during early mouse development, where it shares an expression domain with a Goosecoid-like gene. *Hum. Mol. Genet.* 7: 629-635.
- Wakamiya, M., Lindsay, E.A., Rivera-Perez, J.A., Baldini, A. and Behringer, R.R. 1998. Functional analysis of *Gscl* in the pathogenesis of the DiGeorge and velocardiofacial syndromes. *Hum. Mol. Genet.* 7: 1835-1840.
- Hoogendoorn, B., Coleman, S.L., Guy, C.A., Smith, S.K., O'Donovan, M.C. and Buckland, P.R. 2004. Functional analysis of polymorphisms in the promoter regions of genes on 22q11. *Hum. Mutat.* 24: 35-42.
- Wang, H., Duan, S., Du, J., Li, X., Xu, Y., Zhang, Z., Wang, Y., Huang, G., Feng, G. and He, L. 2006. Transmission disequilibrium test provides evidence of association between promoter polymorphisms in 22q11 gene DGCR14 and schizophrenia. *J. Neural Transm.* 113: 1551-1561.

## CHROMOSOMAL LOCATION

Genetic locus: DGCR14 (human) mapping to 22q11.21.

## SOURCE

DGCR14 (N-12) is an affinity purified rabbit polyclonal antibody raised against a peptide mapping at the N-terminus of DGCR14 of human origin.

## STORAGE

Store at 4° C, **\*\*DO NOT FREEZE\*\***. Stable for one year from the date of shipment. Non-hazardous. No MSDS required.

## PRODUCT

Each vial contains 100 µg IgG in 1.0 ml of PBS with < 0.1% sodium azide and 0.1% gelatin.

Blocking peptide available for competition studies, sc-86413 P, (100 µg peptide in 0.5 ml PBS containing < 0.1% sodium azide and 0.2% BSA).

## APPLICATIONS

DGCR14 (N-12) is recommended for detection of DGCR14 of human origin by Western Blotting (starting dilution 1:200, dilution range 1:100-1:1000), immunoprecipitation [1-2 µg per 100-500 µg of total protein (1 ml of cell lysate)], immunofluorescence (starting dilution 1:50, dilution range 1:50-1:500) and solid phase ELISA (starting dilution 1:30, dilution range 1:30-1:3000); non cross-reactive with DGCR2 and DGCR6.

Suitable for use as control antibody for DGCR14 siRNA (h): sc-77137, DGCR14 shRNA Plasmid (h): sc-77137-SH and DGCR14 shRNA (h) Lentiviral Particles: sc-77137-V.

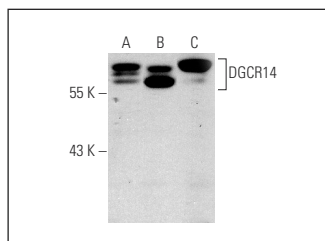
Molecular Weight of DGCR14: 53 kDa.

Positive Controls: DGCR14 (h3): 293T Lysate: sc-174407 or K-562 whole cell lysate: sc-2203.

## RECOMMENDED SECONDARY REAGENTS

To ensure optimal results, the following support (secondary) reagents are recommended: 1) Western Blotting: use goat anti-rabbit IgG-HRP: sc-2004 (dilution range: 1:2000-1:100,000) or Cruz Marker™ compatible goat anti-rabbit IgG-HRP: sc-2030 (dilution range: 1:2000-1:5000), Cruz Marker™ Molecular Weight Standards: sc-2035, TBS Blotto A Blocking Reagent: sc-2333 and Western Blotting Luminol Reagent: sc-2048. 2) Immunoprecipitation: use Protein A/G PLUS-Agarose: sc-2003 (0.5 ml agarose/2.0 ml). 3) Immunofluorescence: use goat anti-rabbit IgG-FITC: sc-2012 (dilution range: 1:100-1:400) or goat anti-rabbit IgG-TR: sc-2780 (dilution range: 1:100-1:400) with UltraCruz™ Mounting Medium: sc-24941.

## DATA



DGCR14 (N-12): sc-86413. Western blot analysis of DGCR14 expression in non-transfected 293T: sc-117752 (A), human DGCR14 transfected 293T: sc-174407 (B) and K-562 (C) whole cell lysates.

## RESEARCH USE

For research use only, not for use in diagnostic procedures.